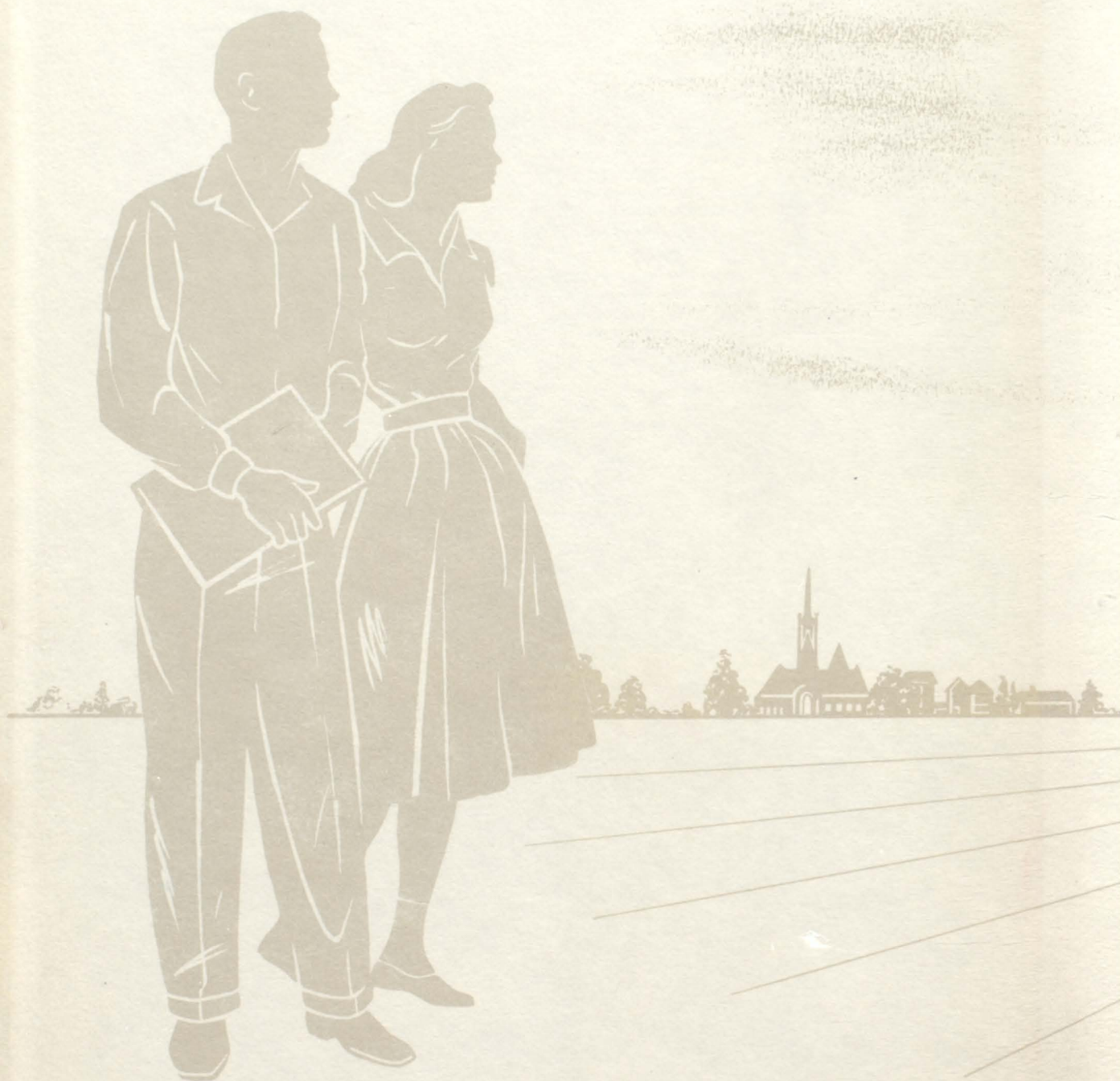
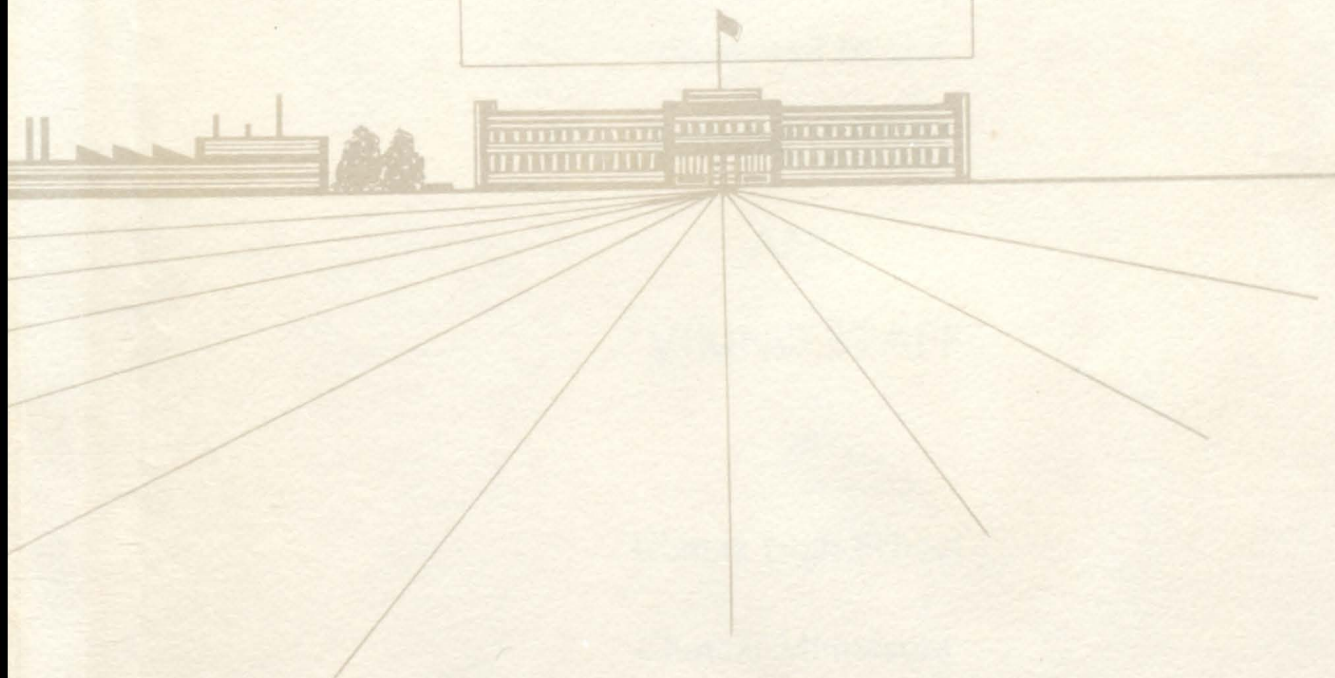




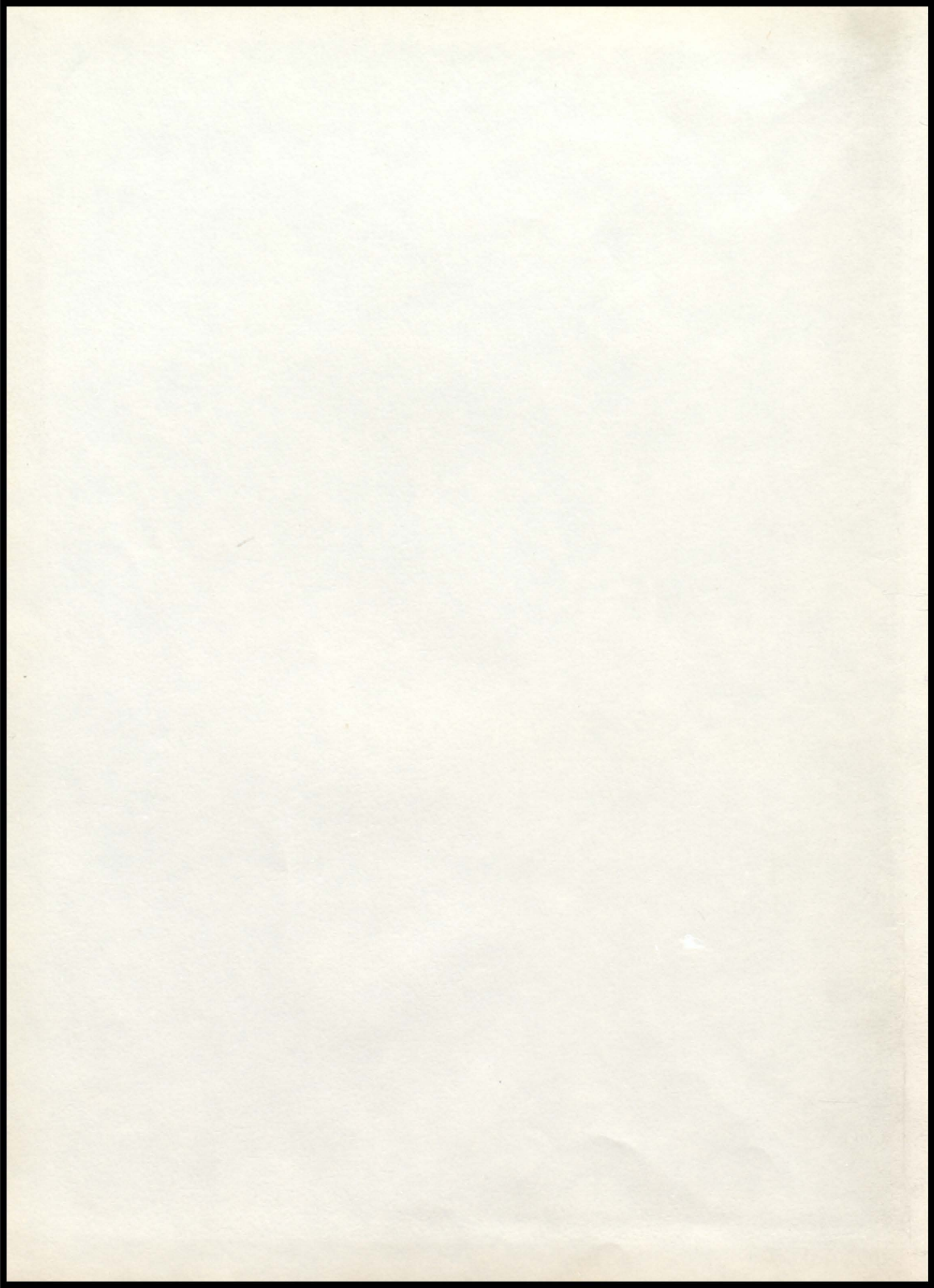
# THE VIKING















# THE 1957 VIKING

presented by the  
SENIOR CLASS  
AND  
VIKING STAFF

of

Climax High School

Climax, Minnesota





## Dedication

To Mr. George P. Nomes we dedicate this 1957 Viking. His warm friendship, untiring efforts, and searching interest in the education of young people are greatly appreciated and will be long remembered.







## Board of Education

Elmer Larson . . . . . President  
 Knute Boe . . . . . Vice President  
 George Keller . . . . . Secretary  
 Oscar Romo . . . . . Treasurer  
 Louis Letnes . . . . . Director  
 Christ Braaten . . . . . Director

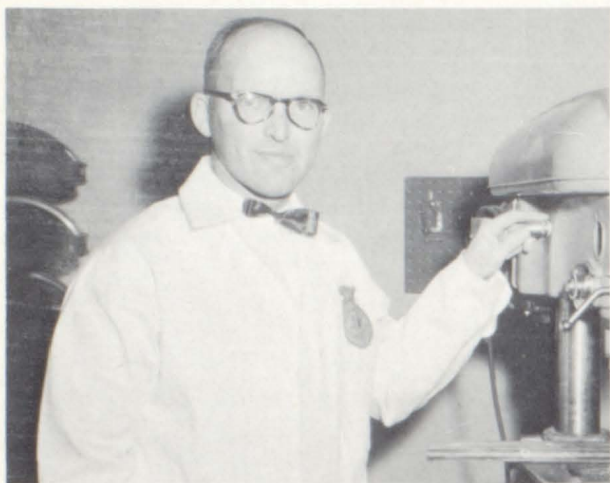


SUPERINTENDENT O. T. OLSEN  
 B.A. Luther College; M. Ed. University  
 of North Dakota; Social Science.

PRINCIPAL D. J. BAKKE  
 B.S. North Dakota Agricultural College;  
 M. Ed. University of North Dakota;  
 Math, Science, Music.







GEORGE NORNES  
Agriculture  
North Dakota Agriculture College



Mrs. BETTY DEITZ  
Home Economics  
North Dakota Agriculture College



DENNIS MICKELSON  
History, Civics  
Concordia



LELAND ELLINGSON  
English, Physical Education, Coach  
Concordia



JEROME KNAPP  
Commercial, Math  
University of North Dakota



ART VRAA  
Science, Biology, Coach  
Concordia





Mrs. MURIEL McCAULEY  
1st Grade  
Mayville State Teachers College



Miss DORIS MERGENTHAL  
2nd Grade  
Concordia



Mrs. LILA WALGREN  
3rd and 4th Grades  
Moorhead State Teachers College



Mrs. CHARLOTTE LETNES  
History, English, Library  
University of North Dakota



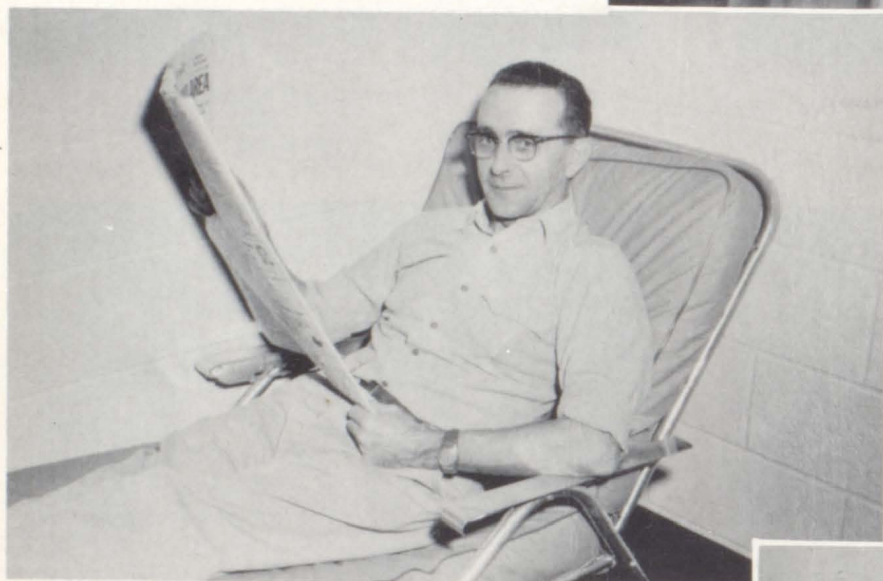
Miss ELLA CONDIFF  
5th and 6th Grades  
Moorhead State Teachers College



Mrs. ELMA OLSEN  
Physical Education  
St. Olaf



"Chauffeurs"  
 Chester Mauritson  
 Avis Christopherson  
 Mrs. Orville Vang  
 Ivan Vraa  
 Royal Hanson  
 Harry Burd  
 Glen Dale



"Maintenance Engineer"  
 Marcus Aas

"Dietitians"  
 Cora Berg  
 Grace Aas  
 Oli Monson



Nurse and "Health Administrator"  
 Mrs. Art Vraa





STUDENTS



# Seniors



Nancy Quirk-Vice-President, Vernon Roningen-President, Ray Thune-Secretary, Curtis Wegge-Treasurer.

MOTTO: "We have crossed the bay; the ocean lies before us."  
COLORS: Black and Silver                      FLOWER: White Rose

As 41 shy, timid freshmen we entered the great halls of Climax High in 1953. Our initiation was every bit as bad as we had been dreading--including green dunce caps. The school burned down in February, and the upstairs of the city hall became our home for the next two years.

During our sophomore year we returned the initiation to new fearful freshmen. Fourteen girls and boys served as waiters and waitresses for the Jr. - Sr. Banquet held in May.

One honor to start our junior year was the choosing of Sonja Engen as the first "Homecoming Queen" of Climax. Next came the very successful junior play, "No Boys Allowed." The setting for the Jr. - Sr. Banquet was a lot of work, but the Hawaiian atmosphere was really complete. We were very proud of our "Island of Waikiki."

Our senior year began with Vern Wegge and Sharon Evenson becoming the "Carnival and Homecoming King and Queen." Then came our class play, the Jr. - Sr. Banquet and last of all the big moment --- graduation!

These 37 seniors have participated very actively in all phases of school and community activities. The spirit of the Class of '57 will not soon be forgotten.'





#### BRUCE BROKKE

"I'm no Cassanova, but I like the girls."

Band 1,2,3,4; Pep Band 3,4; Chorus 1,2,3,4; Boys' Glee Club 3,4; Baritone Solo 4; Basketball 2,3; Track 1,2,4; Football 2,3,4; Baseball 1; "C" Club 2,3,4; FFA 1,2,3,4; Tractor Driving 3,4.

#### PATRICIA BROKKE

"If I make it at all I'll be late."

Band 1,2,3,4; Pep Band 1,3; Director 4; Chorus 1,2,3,4; Girls' Glee Club 1,2,3,4; Librarian 2; Girls' Sextet 1; Triple Trio 4; Camera Club 1; FTA 1; GAA 1,2,3,4; FHA 1,2,3,4; Song Leader 4; Cheerleader 1,2,3,4.

#### SHIRLEY DYBING

"I'm not shy, just reserved."

Camera Club 1; FHA 1; GAA 1,2,3,4;

#### SONJA ENGEN

"Quiet till you know her and then look out."

Band 2,3,4; Pep Band 4; Assistant Director 4; Chorus 1,2,3,4; Girls' Glee Club 1,2,3,4; Camera Club 1; FTA 1; Secretary 1; GAA 1,2,3,4; President 4; FHA 1,2,3,4; State Degree 4; National Convention 4; Homecoming Queen 3; Annual Staff 4; Class Treasurer 1,4; Carnival Committee 4.



#### ROGER ESTENSON

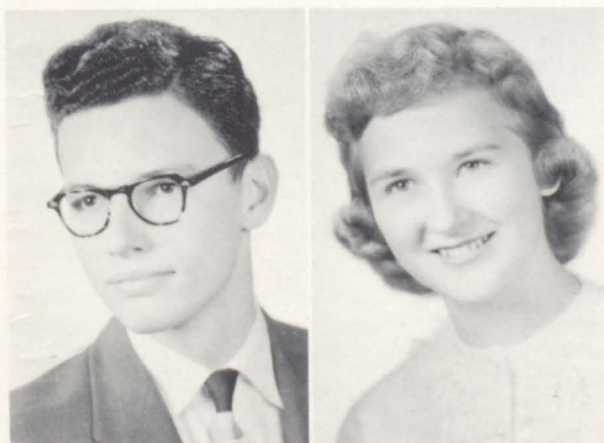
"It's nice to be natural when naturally nice."

Band 1,2,3,4; Assistant Manager 4; Chorus 1,2,3,4; Boys' Glee Club 3,4; Camera Club 1; Basketball 1,2,3,4; "C" Club 4; FFA 1,2,3,4; Treasurer 4; Crop Judging Team 3; Soils Judging Team 4; Potato Judging Team 4; Carnival Committee 4.

#### SHARON EVENSON

"When dates and lessons don't agree I'll take dates, let lessons be."

Band 2,3,4; Pep Band 4; Chorus 3,4; Girls' Glee Club 1,2,3,4; "No Boys Allowed" 3; GAA 1,2,3,4; FHA 1,2,3,4; President 4; State Degree 4; FFA Chapter Sweetheart 4; Cheerleader 2,3,4; Carnival and Homecoming Queen 4; Class Secretary 2; Carnival Committee 4; Betty Crocker Homemaker of Tomorrow 4.



#### HELEN FOLSTAD

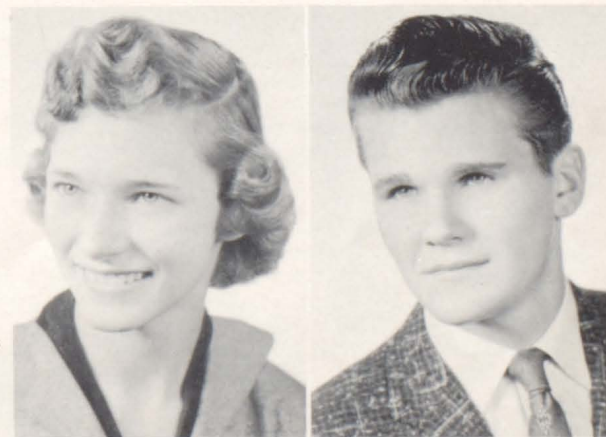
"She travels in circles like a compass."

Band 1,2,3,4; Librarian 3; Pep Band 1,3,4; Chorus 1,2,3,4; Girls' Glee Club 1,2,3,4; Accompanist 1,2,3,4; "Say It With Music" 2; Camera Club 1; Librarian 3; FTA 1,2; FHA 1,2,3,4; State Degree 3; Historian 3; GAA 1,2,3,4; Recorder 3; Carnival Committee 4; Class Vice-President 3; Annual Staff 4.

#### WARREN FOSS

"Hair today--gone tomorrow."

Basketball 1; Baseball 1,2,4; Football 3,4; FFA 1,2,3,4; "C" Club 3,4.







ALDINE GRAY

"I never trouble trouble until trouble troubles me."  
Band 1,2,3,4; Pep Band 1,3,4; Chorus 1,2,3,4; Girls' Glee Club 1,2,3,4; Triple Trio 4; Vocal Solo 3,4; Piano Solo 3,4; "Say It With Music" 2; "No Boys Allowed" 3; Camera Club 1; GAA 1,2,3,4; Recorder 4; FHA 1,2,3,4; State Degree 4; Declam 4.

MARJORIE HANSON

"She packs all her troubles in a box, sits on the lid and laughs."  
Band 2,3,4; Pep Band 4; Chorus 1,2,3,4; Girls' Glee Club 1,2,3,4; Sextet 1; Triple Trio 2,4; "Say It With Music" 2; "No Boys Allowed" 3; Pep Squad 1; Camera Club 1; Librarian 3; FTA 1,2,4; GAA 1,2,3,4; FHA 1,2,3,4, Secretary 3; State Degree 3; Class Secretary 1; Cheerleader 1,3; Declam 4.

ELIZABETH HOLLAND

"Those warm brown eyes that say so much!"  
Band 1,2,3,4; Pep Band 4; Chorus 3,4; Girls' Glee Club 1,2,3,4; Secretary-Treasurer 3; "Say It With Music" 2; Camera Club 1; Pep Squad 1; FTA 1,2,4; Secretary 4; GAA 1,2,3,4; FHA 1,2,3,4; State Degree 3; Cheerleader 1,2,3,4.

JUDY JACOBSON

"Walkin's alright, but I prefer to dance."  
Band 2,3,4; Secretary-Treasurer 4; Pep Band 3,4; Chorus 1,2,3,4; Girls' Glee Club 1,2,3,4; Trio 4; Librarian 3; "Say It With Music" 2; Pep Squad 1; Class Treasurer 2; FHA 1,2,3,4; GAA 1,2,3,4; Treasurer 2, FTA 4, Treasurer 4.



FAITH JOHNSON

"Her friendship is a sunny smile and she always makes her class worthwhile."  
Girls' Glee Club 3,4; Librarian 3; "No Boys Allowed" 3; FHA 1,2; GAA 2,3,4, Secretary 3; Declam 3,4; Minnesota 1956 Girls State 3; Annual Staff 4.

ROGER JOHNSON

"I know I'm not handsome, but what's my opinion against everyone else's?"  
Transfer from Crookston AC; Football 4; FFA 4; Chorus 4; Basketball Manager 4.



SONJA JOHNSON

"Here today gone the rest of the week."  
Girls' Glee Club 3,4; GAA 2,3,4; FTA 3,4; FHA 1,2.

ALLEN KOPPANG

"Hold the fort, I'm coming."  
Band 1,2,3,4; Pep Band 1,3,4; Chorus 1,2,3,4; Boys' Glee Club 3,4; Cornet Solo 1,2,3,4; Mixed Quartette 4; "No Boys Allowed" 3; Camera Club 1; Cheerleader 1; FFA 1,2,3, Secretary 3; Dairy Judging Team 3.







MARLENE LARSON

"My thoughts and my conduct are my own."

Girls' Glee Club 1,2,3,4; GAA 1,2,3,4; FHA 1,2,3,4; Camera Club 1.

MERLYN MALME

"I never let my studies interfere with my education."

Chorus 1,2,3,4; Boys' Glee Club 3,4; Camera Club 1; FFA 1,2,3; Basketball 1; Annual Staff 4.

HARLAN MOREHART

"There must be a lot of work in me, for none ever comes out."

FFA 1,2,3,4; Baseball 1,2,4; Basketball 1,2.

ROBERT MORKEN

"Stop me before I laugh myself to death."

Band 1,2,3,4; Chorus 2; Boys' Glee Club 3; Basketball 2,3,4; Football 2,3,4; "C" Club 2,3,4; FFA 1,2,3,4; Secretary 2; Vice-President 3,4; FFA National Convention 4; State Farmer 3; General Livestock Judging Team 2,3,4; Class President 3.



SHARON NELSON

"Nothing is impossible to a willing mind."

Band 1,2,3,4; Chorus 1,2,3,4; Girls' Glee Club 1,2,3,4; Pep Band 1,3,4; Triple Trio 4; "No Boys Allowed" 3 (Director); "Say It With Music" 2; GAA 1,2,3,4; FHA 1,2,3,4; State Degree 3; FTA 1,2; Camera Club 1; Librarian 3,4; Carnival Committee 4.

LESLIE NESVIG

"A little learning is a dangerous thing."

Chorus 1,2,3,4; Boys' Glee Club 1; Basketball 1,2,3,4; Baseball 1,4; Football 2,3,4; "C" Club 3,4; Track 1; Camera Club 1; FFA 1,2,3,4; Sentinel 2; Dairy Judging Team 3; General Livestock Judging Team 3,4.



JAMES OLSON

"That indolent but agreeable condition of doing nothing."

FFA 1,2,3,4; Football 2,4; "C" Club 2,4.

GERALDINE PETERSON

"For she is a quiet kind whose nature never varies."

FHA 1,2; GAA 3,4; Camera Club 1.







#### JAMES PETERSON

"Life is a serious business, and girls aren't in it."  
Basketball 2; Football 3,4; "C" Club 3,4; FFA 1,2,3,4; Judging Team 3,4.

#### RALPH PETERSON

"The hardest thing to give is in."  
Camera Club 1; Boys' Glee Club 3; "No Boys Allowed" 3; Basketball 1,2,3,4; Baseball 1,2,3,4; Football 2,3,4; Co-Captain 3; Track 3; "C" Club 2,3,4; FFA 1,2,3,4; Reporter 2; Secretary 4; National Convention 3; Potato Judging Team 2; General Livestock Judging Teams 2,3,4; Class President 2; Annual Staff 4; Carnival Committee (Chairman) 4.

#### NANCY QUIRK

"She's pretty wise for her pint size."  
Girls' Glee Club 1,2,3,4; Vice-President 3; "Say It With Music" 2; "No Boys Allowed" 3; Camera Club 1; GAA 1,2,3,4; FTA 4; President 4; FHA 1,2,3,4; Treasurer 2; State Degree 3; Librarian 3,4; Class Vice-President 4; Annual Staff 4; Salutatorian.

#### VIRGINIA RANTEN

"Speech is great, but silence is greater."  
Chorus 1,2,3,4; Girls' Glee Club 1,2,3,4; "Say It With Music" 2; "No Boys Allowed" 3; Librarian 3; Band 1,2; Camera Club 1; Sextet 1; GAA 1,2,3,4; FHA 1,2,3,4.



#### GEORGE TAUS

"I'm not fast--just quick."  
Boys' Glee Club 3,4; Vice-President 4; Baseball 1,2,3,4; Basketball 1,2,3,4; Football 2,3,4; "C" Club 2,3,4; Track 1,2,3,4; FFA 1,2,3; Dairy Judging Team 2,3; "No Boys Allowed" 3.

#### RAY THUNE

"My only books are women's looks and I sure do love to study."  
Band 1,2,3,4; Chorus 1,2,3,4; Vice-President 4; Boys' Glee Club 3,4; Camera Club 1; Basketball 1,2,3,4; Baseball 1,2,3,4; Football 3,4; Co-Captain 4; Track 1,2,3,4; FFA 1,2,3; Potato Judging Team 3; "No Boys Allowed" 3; Class Vice-President 1; Class Secretary 4; Annual Staff 4.



#### VERNON RONINGEN

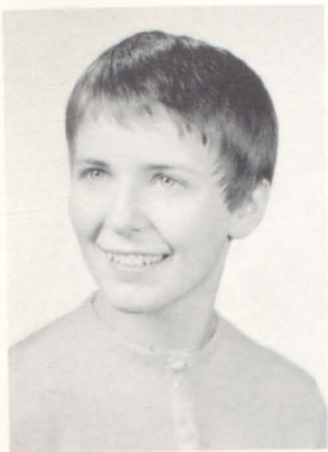
"Einstein with a crew cut."  
Band 2,3,4; Assistant Manager 3; Manager 4; Pep Band 3,4; Chorus 1,2,3,4; Boys' Glee Club 3,4; "No Boys Allowed" 3; Football 2,3,4; Captain 4; Basketball Manager 3; "C" Club 2,3,4; FFA 1,2,3,4; President 4; Treasurer 3; National Convention 4; Soils Judging Team 3,4; Potato Judging Team 3,4; Class President 4; Carnival Committee 4; Annual Staff (Editor) 4; Valedictorian.

#### MARLYS SPOKELY

"When fun ceases, I exist no more."  
Band 1,2,3,4; Chorus 1,2,3,4; Girls' Glee Club 1,2,3,4; President 3-Secretary 4; Camera Club 1; Pep Squad 1; Secretary-Treasurer 1; Pep Band 4; Sextet 1; Triple Trio 4; Librarian 3,4; "Say It With Music" 2; "No Boys Allowed" 3; GAA 1,2,3,4; Recorder 1; FTA 1; FHA 1,2,3,4; Reporter 3; State Degree 3; Class Secretary 3; Carnival Committee 3.







#### MAXINE VETTERN

"From the crown of her head to the sole of her foot; she is all mouth."

Girls' Glee Club 1,2,3,4; Camera Club 1; FTA 1; Pep Squad 1; Class President 1; "Say It With Music" 2; "No Boys Allowed" 3; GAA 1,2,3,4; FHA 1,2,3,4; State Degree 3; Librarian 3,4.

#### CURTIS WEGGE

"I have no care--why should I worry? Not even the bell can make me hurry!"

Band 1; Camera Club 1; Boys' Glee Club 3; Basketball 2,3,4; Football 3,4; Track 3; "C" Club 3,4; FFA 1,2,3,4; Judging Team 2,3; "No Boys Allowed" 3.

#### VERN WEGGE

"All that and he can play basketball, too."

Band 1,2,3,4; Chorus 1,2,3,4; President 4; Boys' Glee Club 3,4; Basketball 1,2,3,4; Baseball 2,3,4; Track 3; Football 3; "C" Club 2,3,4; FFA 1,2,3,4; Sentinel 3; Annual Staff 4; Carnival and Homecoming King 4.

#### JOVONNE WOLLERTSON

"I'll speak in a monstrous little voice."

Camera Club 1; Band 1,2,3,4; Pep Band 1,3,4; Chorus 1,2,3,4; FHA 1,2,3; Girls' Glee Club 1,2,3,4; FTA 1,3,4; GAA 1,2,3,4; Cheerleader 4.



#### JUNEAL WOLLERTSON

"Often burns the midnight oil, but not for study."

Band 1,2,3,4; Vice-President 4; Pep Band 1,3,4; Chorus 1,2,3,4; Secretary-Treasurer 4; Girls' Glee Club 1,2,3,4; Librarian 4; Triple Trio 4; FHA 1,2,3,4; State Degree 4; FTA 1,3; GAA 1,2,3; Camera Club 1; Librarian 4; Declam 1; Toastmistress for Jr.-Sr. Banquet 3.





# Juniors



Brent Amundson  
Floyd Aure  
Audrey Bjorge  
Carol Braaten  
Myron Bratager



Luverne Eidsmoe  
Bonnie Gilbertson  
Darlene Hettervig  
Vernell Knodle  
Betty Jane Larson



Ronald McCauley  
Arnold Moen  
Gary Monson  
Barbara Morken  
Arlin Munter



Phyllis Odegard  
Beverly Quirk  
Jeanine Rogenes  
Olga Sandvik  
Dianne Tonder



Kay Vang



Gary Monson-Treasurer, Brent Amundson-Secretary, Phyllis Odegard-President, Jeanine Rogenes-Vice-President.





# Sophomores



Bettie Beyers  
Christy Braaten  
Dorothy Braaten  
Richard Burd  
Wayne Cayler

Toni Davidson  
Richard Estenson  
David Gilbertson  
Gail Grove  
Earl Hedde

Priscilla Hughes  
Margaret Jahnke  
Loretta McCauley  
Ruth Merkins  
Ronnie Nesvig

Marjorie Odegard  
Rand Rogenes  
Virgil Sistasd  
Jerry Vang



Rand Rogenes-Treasurer, Ronald  
Nesvig-Vice-President, Dorothy  
Braaten-President, Richard Es-  
tenson-Secretary





# Freshmen



Sherry Amundson  
Robert Braaten  
Harris Brokke  
Sandy Cameron  
Marshall Cooper  
Norman Engen

Nanty Evenson  
Carol Foss  
Cameron Gray  
Eunice Grove  
Gary Hanson  
Larry Hanson

Barbara Hartman  
Donald Hemming  
Roger Holland  
Douglas Johnson  
Truman Johnson  
Brent Larson

Bruce Larson  
Judy Larson  
John Lian  
LaDell Lomsdal  
LaMae Lomsdal  
Mylan Moen

Frances Mullen  
Darrel Peterson  
Joyce Quirk  
Gwen Rensland  
Kathryn Rogenes  
Sandra Severson

Gail Sondreal  
Dennis Taus  
Patsy Thompson  
Connie Wegge



Joyce Quirk-Secretary, Roger Holland-Vice-President, Dennis Taus-President, Norman Engen-Treasurer.







1st ROW, Left to Right: Janice Moen, Marilyn Larson, Russell Nelson, Karen Larson, Rodney Spokely.  
 2nd ROW: Ruth Holland, Ronnie Peterson, Judy St. Germaine, Linda Davidson, Carol Johnson. 3rd  
 ROW: Duanne Evenson, Viola Nelson, Kathy Homstad, Sherilyn Abrams, Curtis Merkins. 4th ROW:  
 Duane Brunswick, Wayne Dybing, Kent Peterson, David Sondreal.

1st ROW, Left to Right: Curtis Hemming, Donnie Braaten, Duanne Lomsdahl, Kenny Hartman, Dennis  
 Thune. 2nd ROW: Jackie Erickson, Stuart Orvik, Sandy Spokely, Bobby Brokke, Patricia Johnson. 3rd  
 ROW: Allan Peterson, Ronnie Orvik, Marsha Keller, Janice Thompson, Pat Tendeland. 4th ROW:  
 Miles Eidsmoe, Jerry Larson, Stanford Erickson, Joey Anderson.

S  
E  
V  
E  
N





# FIVE & SIX



1st ROW, Left to Right: James Grove, Stewart Brokke, Nancy Ranten, Susan Dale, Leon Vetter, Jeanne Evenson. 2nd ROW: Ivadelle Abrams, Sharon Gullingsrud, Claudia Hanson, Sherman Stortroen, Sandra Moen, Miss Condiff. 3rd ROW: Linda Larson, Jeffrey Nesvig, Marlys Rotvold, Geraldine Homstad, Lionel Estenson, Vicky Erickson. 4th ROW: Robert Peterson, Dorothy Evenson, Thomas Letnes, Robert Lian, Reuben Gordon.

1st ROW: Left to Right: Janice Koppang, Eileen Evenson, Gary Thorson, Nina Thune, Becky Ranten, Murray Hartman, Sharon Braaten, Diane Thompson, Corene Bakke. 2nd ROW: Margo Monson, Eileen Stortroen, Corine Thune, Joey Dale, Janice Evenson, Janet Thune, Odell Stortroen, Arlen Larson, Mrs. Walgren. 3rd ROW: Linda Paulson, Tommy Morken, Kay Chandler, Steven Nesvig, Douglas Gronberg, Dianne Homstad, Linda Erickson, Susan Lian. 4th ROW: Colleen Landa, Cheryl Berg, Tommy Christopherson, Noreen Brokke, Betty Tofsley, Kathy Cameron, Gary Peterson, Wayne Fingalson. NOT PICTURED: Dianne Larson.



# THREE & FOUR



# TWO & THREE



1st ROW, Left to Right: Darrell Johnson, Mary Dale, Jimmy Johnson, Pat Peterson, Paul Estenson, Paul Bakke. 2nd ROW: Miss Mergenthal, Billy Keller, Rae Joanne Chandler, Connie Hanson, Berneice Wunder, Carl Tofsley, Wayne Erickson. 3rd ROW: Michael Nesvig, Janice Landa, LaDonna Rotvold, Raymond Dale, Myles Nettum, Brian Amundson. 4th ROW: Kerry Renslen, Barbara Anderson, Ronald Berg, John Wunder, Galen Thompson, Ronald Lian. NOT PICTURED: Dennis Eckron, Merlin Sondrol.

1st ROW, Left to Right: Leslie Evenson, Gregory Dale, Bonnie Estenson, Pamela Renslen, Danny Gronberg, Harlow Grove, Carol Dale. 2nd ROW: Karen Suldahl, Bonnie Braaten, LeRoy Evenson, Tommy Thorson, Randy Hayes, Joel Rotvold, Mr. McCauley. 3rd ROW: Wanda Fingalson, Janice Stortroen, Keith Evenson, Vicki Weddle, Steven Stortroen, David Brokke, Wayne Sondreal.

# GRADE ONE





# Grade Operetta



"White Gypsy"



We all appreciate the hard work and effort they have put into these productions to make them so successful year after year.

The grade operettas under the able guidance of Mrs. Walgren and Miss Condiff have drawn bigger crowds than any other activity during the year.

The between act numbers were presented by the first and second grades under the direction of Mrs. McCauley and Miss Mergenthal.





# CHS







Sr. FHA-1st ROW, Left to Right: P. Brokke, L. Eidsmoe, A. Bjorge, S. Evenson, B. Morken, P. Odegard, D. Braaten. 2nd ROW: D. Tonder, L. Lomsdahl, J. Quirk, N. Evenson, P. Thompson, E. Holland, L. McCauley, T. Davidson, N. Quirk, O. Sandvik. 3rd ROW: M. Hanson, S. Engen, V. Ranten, B. Quirk, M. Vetter, M. Spokely, J. Rogenes, S. Cameron, G. Sondreal, B. Hartman. 4th ROW: J. Jacobson, J. Larson, L. Lomsdahl, S. Amundson, J. Wollertson, F. Mullen, M. Odegard, B. Larson, C. Foss, S. Severson. 5th ROW: C. Wegge, K. Rogenes, S. Nelson, G. Grove, B. Gilbertson, A. Gray, P. Hughes, D. Hettervig, H. Folstad, Mrs. Dietz-Advisor. NOT PICTURED: E. Grove, G. Rensland, C. Braaten, M. Larson.



Jr. FHA-1st ROW, Left to Right: C. Johnson, M. Keller, J. Thompson, R. Holland, M. Larson. 2nd ROW: J. Moen, J. Erickson, S. Spokely, K. Larson. 3rd ROW: V. Nelson, L. Davidson, K. Homstad, S. Abrams, Mrs. Dietz-Advisor.







Sonja Engen and Phyllis Odegard were delegates to the national convention in Chicago. Phyllis Odegard was also elected District I Vice-President.

The first of July Sonja Engen and Phyllis Odegard went to Chicago for the national convention where they were presented with baby orchids by the delegation from Hawaii.

Last June Bonnie Gilbertson and Sharon Evenson attended the State FHA Camp at Lake Arrowhead near Virginia, Minnesota.

In the fall, almost 100% of our total membership of 70 attended the district convention at Northome where Phyllis

Odegard was elected District I Vice President.

The 11 girls working for their state degrees organized a chapter in Kennedy.

In March, 16 girls attended the state convention accompanied by Mrs. Keller and Mrs. Dietz. All 11 girls who worked for their State Homemaker Degrees received them. Marjorie Odegard was elected State President-Elect.

At the Mother-Daughter Banquet 15 girls received their Junior Degrees and 7 earned their Chapter Degrees.

Some of our projects during the year were the FFA-FHA Pancake Supper, Hobo Days, and bake sales.

We wish to express our gratitude to Mrs. Keller, Mrs. Evenson, and Mrs. Dietz for their guidance and encouragement this past year.



## State Degree Winners

SEATED, Left to Right: Barbara Morken, Juneal Wollertson, Beverly Quirk, Aldine Gray, Bonnie Gilbertson, Jeanine Rogenes. STANDING: Sonja Engen, Sharon Evenson, Phyllis Odegard, Luverne Eidsmoe, Dianne Tonder.





"Hello Vern?"



"I hope they're tall, dark, and handsome."



Triple Threat



"Now that's more my size."



"This takes skill."



All kids love suckers.



## "Backwoods Romeo"

Director . . . . . Mrs. Ted Dietz  
Student Manager . . . . . Vernell Knodle  
Prompter . . . . . Toni Davidson  
Make-up . . . . . Doris Mergenthal



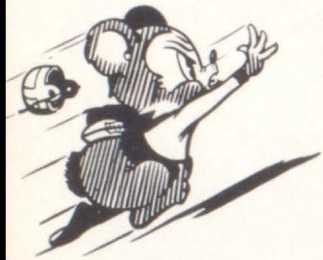




"The Men"



"Sharon and Vern"



# Homecoming and Carnival Royalty







## Senior Play

### "Hot Ice"

Velma Warren, daughter of Mr. and Mrs. Warren .....	Sonja Engen
Patricia Warren, Velma's younger sister .....	Nancy Quirk
Mrs. Warren, Mother of Velma and Patricia Warren .....	Helen Folstad
Olivia, the Warren's hired girl .....	Sharon Nelson
Louise Temple, a niece of Mrs. Warren's by marriage .....	Maxine Vettern
Mrs. Noster, a gossip neighbor .....	Aldine Gray
Miss Emerson, a lady lawyer .....	Jovonne Wollertson
Earl Wakefield, a young fellow of about twenty .....	Curtis Wegge
Mr. Sharp, a detective .....	Merlyn Malme
Matthew Warren, Father of Velma and Patricia Warren .....	Vernon Roningen
Robert Moore, a movie hero .....	Bruce Brokke
Production Staff	
Director .....	Mrs. Thomas Letnes
Student Director .....	Marlys Spokely
Prompters .....	Pat Brokke
	Shirley Dybing
Business Managers .....	Liz Holland
Make-up .....	Sharon Evenson
	Marge Hanson
Stage Manager .....	Ray Thune
Program Chairman .....	Faith Johnson







## Girls Athletic Association

1st ROW, Left to Right: D. Tonder, L. Lomsdahl, J. Quirk, O. Sandvick, E. Holland, N. Quirk, J. Jacobson, P. Brokke. 2nd ROW: Mrs. Olsen, T. Davidson, M. Vetter, V. Ranten, B. Quirk, C. Rognes, J. Wollertson, M. Hanson. 3rd ROW: M. Spokely, S. Severson, L. Lomsdahl, J. Rognes, P. Odegard, S. Evenson, S. Engen, S. Dybing. 4th ROW: L. Eidsmoe, B. Morken, M. Odegard, D. Hetttervig, S. Johnson, H. Folstad, S. Nelson. 5th ROW: A. Bjorge, F. Johnson, B. Gilbertson, A. Gray, G. Grove, P. Hughes, D. Braaten. NOT PICTURED: Carol Braaten, Barbara Hartman, Marlene Larson, Geraldine Peterson.

## Future Teachers of America

1st ROW, Left to Right: Dianne Tonder, Judy Jacobson, Nancy Quirk, Jovonne Wollertson, Elizabeth Holland. 2nd ROW: La Dell Lomsdahl, Sandy Severson, Barbara Hartman, La Mae Lomsdahl, Sonja Johnson, Marjorie Hanson, Joyce Quirk.





# "C" CLUB



1st ROW, Left to Right: Curtis Wegge, Ronnie McCauley, Ralph Peterson, Ray Thune, Rand Rogenes, James Peterson, George Taus, Dennis Taus. 2nd ROW: Art Vraa, Vernon Roningen, Brent Amundson, Gary Monson, Ronnie Nesvig, Leslie Nesvig, James Olson, Leland Ellingson. 3rd ROW: Warren Foss, Myron Bratager, Roger Estenson, Vern Wegge, Robert Morken, Wayne Cayler, Bruce Brokke.



## Library Staff

Marlys Spokely, Mrs. Letnes, Sharon Nelson, Phyllis Odegard, Juneal Wollertson, Maxine Vettern, Nancy Quirk.

## Declamation

SEATED: Aldine Gray, Faith Johnson, Kay Vang  
STANDING: Marjorie Hanson, Maxine Vettern,  
Coach, Dennis Mickelson. NOT PICTURED is  
Francis Mullen.







## Solos

LEFT to RIGHT: Kay Vang, Alto Saxophone; Bruce Brokke, Baritone; Allen Koppang, Cornet. They all received A in the District Music Festival. Allen received A in the State Area Music Festival.

## Band Mothers' Club

President . . . . . Mrs. Cameron Gray  
 Vice-President . . . . . Mrs. Clifton Odegard  
 Recording Secretary . . . . . Mrs. Lloyd Sondreal  
 Financial Secretary . . . . . Mrs. Orville Vang  
 Treasurer . . . . . Mrs. Allan Larson

STANDING, L. to R.: Mrs. Larson, Mrs. Gray, Mrs. Vang, Mrs. Sondreal, Mrs. Odegard.







DIRECTOR  
Mr.  
Jack  
Harris

## Band

Our sixty-seven piece band, under the direction of Mr. Harris, is one of the most outstanding musical organizations in this area.

During our six years we have received "A" ratings in the District Music Festivals and State Area Contests.

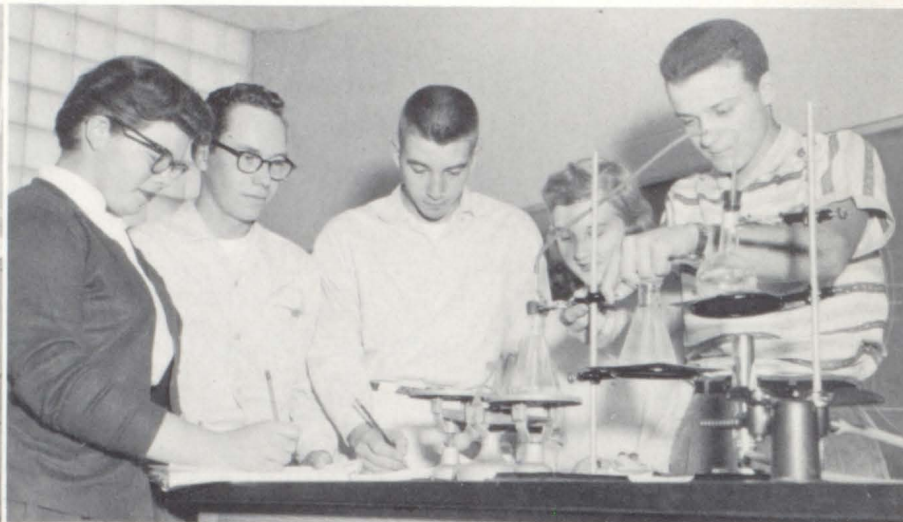
We wish to express our appreciation to the Band Mothers who have purchased instruments and a piano this year. We also wish to thank Mr. Harris for his fine leadership.

## Band Personnel

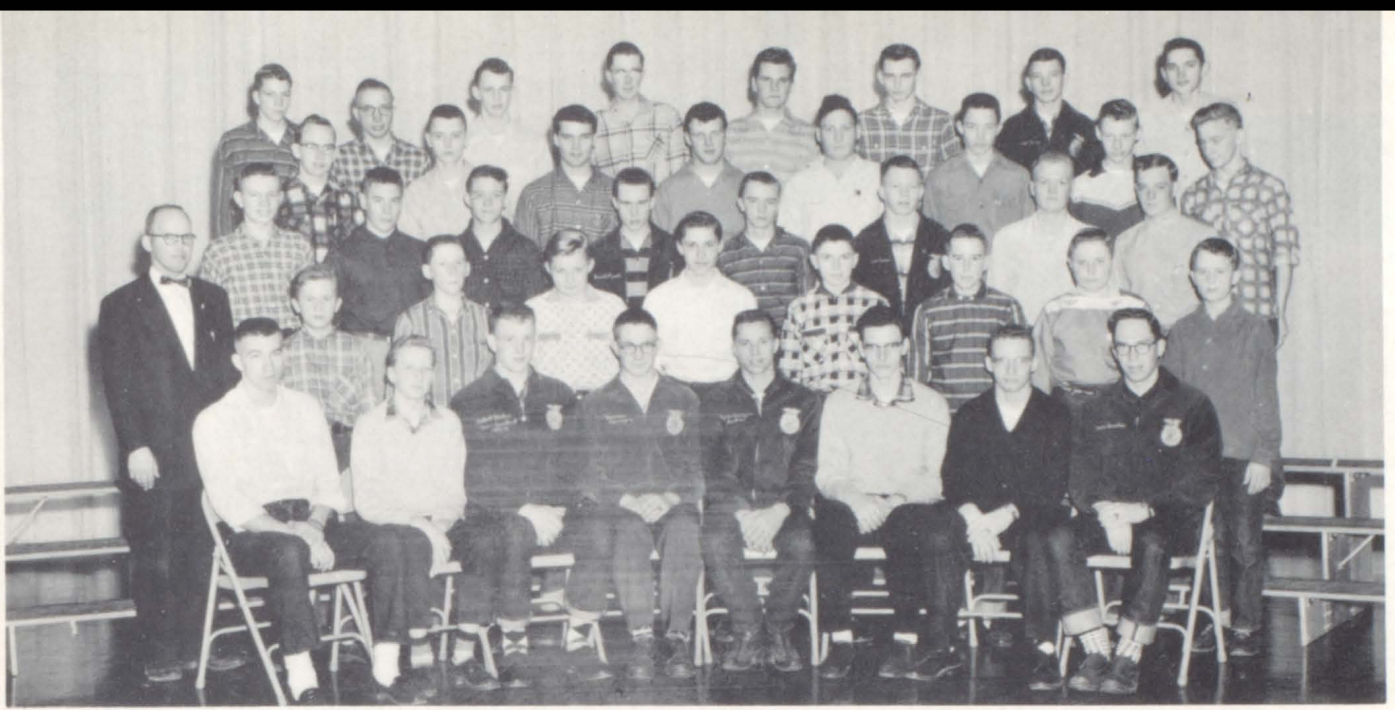
CLARINETS-Carol Braaten, Dorothy Braaten, Judy Jacobson, Marilyn Larson, Katherine Homstad, Eunice Grove, Margaret Jahnke, Jeanine Rogenes, Toni Davidson, Karen Larson, Carol Johnson, Kathryn Rogenes, Linda Davidson, Sherilyn Abrams, Janice Thompson. E-FLAT CLARINET-Jeanne Evenson. OBOE-Luvene Eidsmoe. OBOE-Luvene Eidsmoe. FLUTES-Darlene Hettervig, Sharon Evenson, Sonja Engen, Phyllis Odegard, Marlys Rotvold, Jackie Erickson. SOPRANO SAX-Dianne Tonder. ALTO SAX-Kay Vang, Nancy Evenson, Jovonne Wollertson, Betty Larson, Loretta McCauley, Marsha Keller. TENOR SAX-Helen Folstad, Aldine Gray, Sandra Severson, Ray Thune, Carol Foss. BARITONE SAX-Lionel Estenson. BASS CLARINET-Robert Brokke. CORNETS-Allen Koppang, Gary Monson, Bonnie Gilbertson, David Sondreal, Richard Estenson, Harris Brokke, Dennis Thune. MELLOPHONES-Patty Brokke, Marlyce Spokely, Elizabeth Holland, Sherry Amundson, Marjorie Odegard, Gail Grove. BARITONES-Juneal Wollertson, Bruce Brokke, Vernon Roningen, Ivadelle Abrams. TROMBONES-Barbara Morken, Roger Estenson, Judy Larson, Arnold Moen, Cameron Gray, Dorothy Evenson. BASSES-Robert Morken, Vern Wegge, Douglas Johnson. PERCUSSION-Marjorie Hanson, Sharon Nelson, Joyce Quirk, Patricia Johnson.



# "It's All in a Day's Work."







1st ROW: Vern Wegge, Richard Estenson, Reporter; Robert Morken, Vice-President; Vernon Roningen, President; Myron Batager, Sentinel; Roger Estenson, Treasurer; Ralph Peterson, Secretary; Bruce Brokke. 2nd ROW: George P. Nornes, Advisor; Brent Larson, Tim Cooper, Truman Johnson, Douglas Johnson, Larry Hanson, Norman Engen, Donald Hemming, Bruce Larson. 3rd ROW: Mylan Moen, Cameron Gray, John Lian, Vernell Knodle, Dennis Taus, Earl Hedde, Floyd Aure, Arlen Munter. 4th ROW: Harris Brokke, Rand Rogenes, Roger Johnson, Harland Morehart, James Olson, Dick Burd, Roger Holland, Darrell Peterson. 5th ROW: Robert Braaten, James Peterson, Leslie Nesvig, Christie Braaten, Warren Foss, Ronnie Nesvig, Jerry Vang, Arnold Moen.

## Future Farmers of America

The fall activities started with the participation of the livestock and dairy judging teams in the State Fair FFA Judging Contest.

On October 13 the district officers attended the fall leadership meeting at Thief River Falls. That same day Mr. and Mrs. Cecil Malme, Mr. and Mrs. George Nornes, Robert Morken, Vern Roningen, and Ralph Peterson started their week long trip to the National FFA Convention at Kansas City, Missouri. The highlight of the convention was the awarding of the FFA's highest degree, that of the American Farmer, to Cecil Malme.

February found seven of our members exhibiting livestock at our Red River Valley Winter shows. At the same show the potato judging team took top honors for the third consecutive year.

The spring district FFA convention was held at Crookston on April 23. Participating in the judging contests were the general livestock judging team which placed fourth and the dairy judging team which placed eleventh.

The annual state FFA convention held May 5-8 was highlighted by the awarding of the states's highest degree, the State Farmer, to Ralph Peterson.

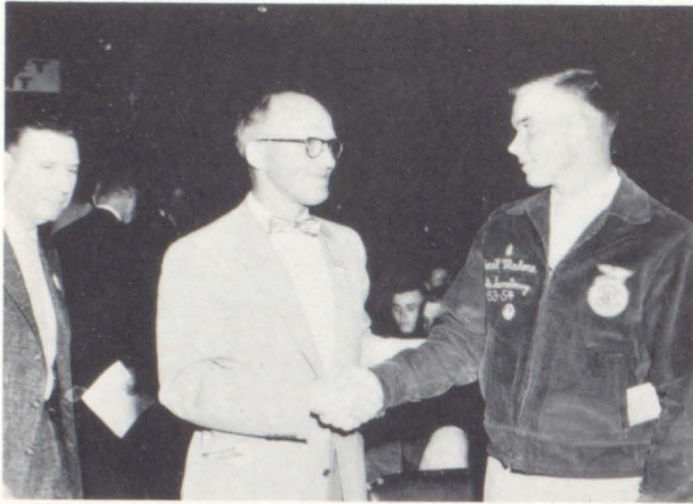
The soils judging team, which took top honors at the district last fall, placed in the Gold Ribbon group in state competition.

The general livestock judging team placed in the Silver group.

At our annual Parent-Son Banquet, attended by close to 100% of the boys and parents, Phillip Peterson was awarded the honorary membership to our chapter.

On May 24 we were honored to have with us the National Secretary, Jerry Litton. Jerry's speech highlighted the annual FFA Style Show.





## "Congratulations, Cecil!"

Cecil Malme being congratulated by Mr. Nomes at the National FFA Convention, Kansas City, Missouri. Cecil received the organization's highest award, the American Farmer Degree. Cecil was an outstanding leader of our FFA Chapter, and was a member of the championship dairy judging team. He owns a herd of registered holstein cattle and farms in partnership with his dad on a 600 acre farm. He served as District 1 President in 1952-53 and State Secretary in 1953-54.

We were honored to have Jerry Litton, National FFA Secretary, at our vocational program May 24th. Jerry picked the queen of the FHA Style Show and spoke to the 400 people gathered for the occasion. Pictured are Jerry, Queen Dianne Tonder, FFA Sweetheart Sharon Evenson, and FFA President Vernon Roningen who was Master of Ceremonies. Vernon received the DeKalb Agriculture Achievement Award given to the outstanding senior in agriculture. Vernon has served as our Treasurer and President. He has maintained a straight "A" average over 4 years of high school work and has a supervised farming program of beef and crops.



Ralph Peterson received the State's highest degree, that of State Farmer, at our State FFA Convention. Ralph has been officer and leader of our FFA Chapter and has a flock of 40 high quality, registered, Hampshire sheep.

## F. F. A. Banquet







## Land Use Judging Team

Vernon Roningen, Roger Estenson, James Peterson.

This team won the district contest and placed in the gold group in the state contest.

## General Livestock Judging Team

Ralph Peterson, Robert Morken, Leslie Nesvig.

This team placed fourth in the district and in the silver group in the state contest.



## Potato Judging Team

Richard Estenson, Roger Estenson, Vernon Roningen

This team won the potato judging contest at the Red River Valley Winter Shows.

## Dairy Judging Team

Douglas Johnson, Norman Engen, Larry Hanson.





# CHS



## Girls Glee Club

1st ROW, Left to Right: Nancy Evenson, Patsy Thompson, Sandra Severson, Olga Sandvik, Loretta McCauley, Carol Foss, Judy Jacobson, Gwen Rensland, Elizabeth Holland, Jovonne Wollertson, Gail Sondreal, Toni Davidson. 2nd ROW: Dianne Tonder, Pat Brokke, Sonja Engen, Connie Wegge, Phyllis Odegard, Marjorie Odegard, Sonja Johnson, Marjorie Hanson, Marlys Spokely, Bettie Byers, Sharon Evenson, Nancy Quirk, Director D. J. Bakke. 3rd ROW: Maxine Vetterm, Helen Folstad, Luveme Eidsmoe, Barbara Morken, Eunice Grove, Lois Floberg, Carol Braaten, Ruth Merkins, Judy Larson, Kathryn Rogenes, Beverly Quirk, Virginia Ranten. 4th ROW: Sherry Amundson, Sharon Nelson, Audrey Bjorge, Juneal Wollertson, Darlene Hettervig, Faith Johnson, Aldine Gray, Bonnie Gilbertson, Priscilla Hughes, Gail Grove, Kay Vang, Margaret Johnke, Betty Jane Larson.

The Glee Club, under the direction of D. J. Bakke, received an 'A' rating at the district and at the regional festivals. We sang "Going Home".

We wish to express our sincere thanks to the Band Mothers for the gowns which they purchased for us.

The accompanists for these groups are Helen Folstad, Nancy Evenson, Phyllis Odegard, Marjorie Odegard, and Priscilla Hughes.



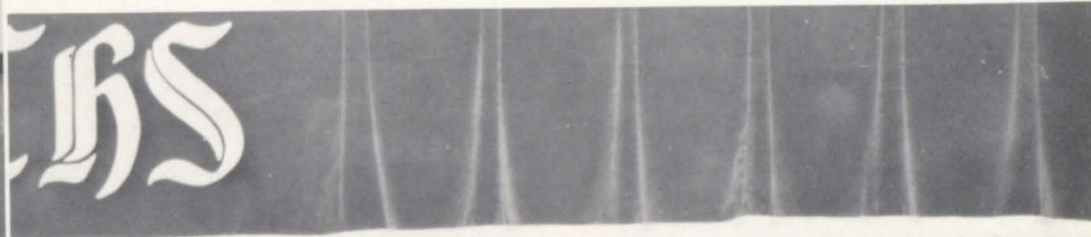


# Mixed Chorus

1st ROW, Left to Right: Olga Sandvik, Loretta McCauley, Judy Jacobson, Kathryn Rogenes, Eunice Grove, Gail Sondreal, Sandra Severson, Gwen Rensland, Bettie Beyers, Judy Larson, Betty Larson, Sherry Amundson, Connie Wegge, Virginia Ranten, Diannie Tonder. 2nd ROW: Lois Floberg, Sharon Nelson, Priscilla Hughes, Aldine Gray, Marlys Spokely, Luverne Eidsmoe, Sonja Engen, Carol Foss, Phyllis Odegard, Margaret Jahnke, Helen Folstad, Carol Braaten, Kay Vang, Patsy Thompson. 3rd ROW: Patty Brokke, Sharon Evenson, Gail Grove, Ruth Merkins, Darlene Hettervig, Audrey Bjorge, Larry Hanson, Cameron Gray, Harris Brokke, Richard Estenson, Douglas Johnson, Ronnie McCauley, Marjorie Hanson, Jovonne Wollertson, Elizabeth Holland. 4th ROW: Nancy Evenson, Marjorie Odegard, Barbara Morken, Juneal Wollertson, Allen Koppang, Bruce Brokke, Roger Estenson, Gary Monson, Vern Wegge, Brent Amundson, Ray Thune, Vernon Roningen, Leslie Nesvig, Merlyn Malme, Director D. J. Bakke.

The Chorus, under the direction of D. J. Bakke, received an 'A' rating at the district festival and a 'B' rating at the regional festival. We sang "Thee God We Praise" and "To Thee We Sing".

One project during the year was a singing tour of several area churches.





# Football

1st ROW, Left to Right: Kenny Hartman, Student Manager; Leslie Nesvig, David Gilbertson, Darrell Peterson, Kent Peterson, James Peterson, Cam Gray, Roger Johnson, Wayne Caylor. 2nd ROW: Allan Peterson, Student Manager; George Taus, Warren Foss, Bob Morken, Ray Thune, Vernon Roningen, Gary Monson, Ronnie McCauley, Curtis Wegge. 3rd ROW: Ronnie Peterson, Ralph Peterson, Virgil Sistad, Myron Batager, Ronnie Nesvig, James Olson, Bruce Brokke, Dennis Taus, David Sondreal, Mr. Art Vraa, Coach.

## Schedule

Climax. .... 12	Hallock. .... 27
Climax. .... 13	Twin Valley. .... 30
Climax. .... 43	Borup. .... 0
Climax. .... 7	Argyle. .... 6
Climax. .... 20	Gary. .... 20
Climax. .... 0	Hendrum. .... 20
Climax. .... 12	Waubun. .... 0
Climax. .... 13	Halstad. .... 19



Bob Morken

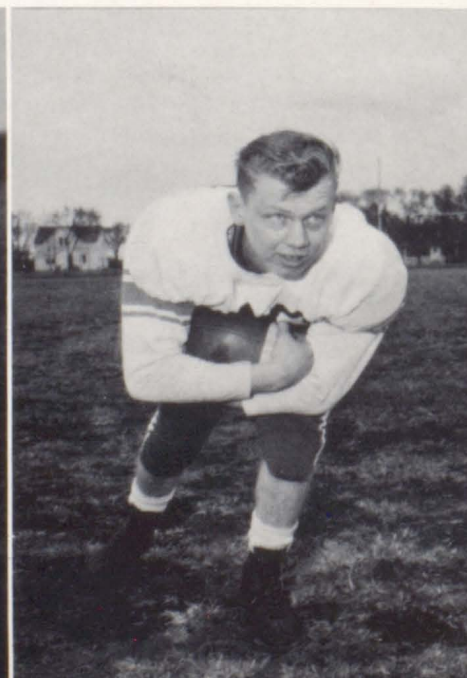
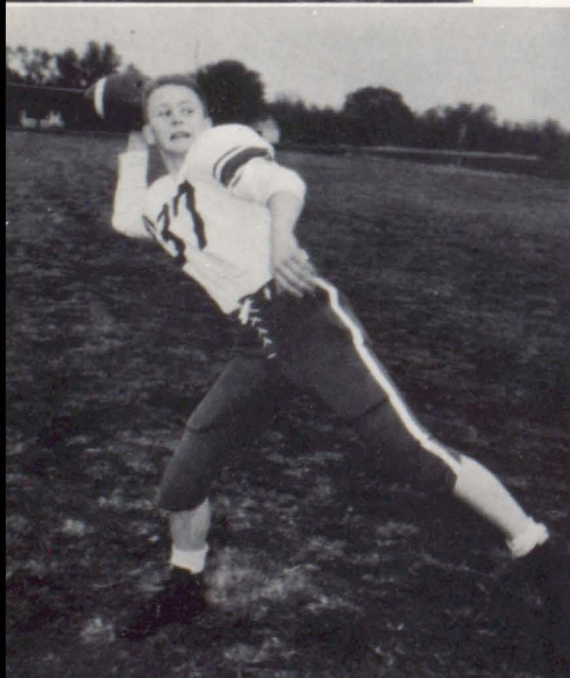


Curt Wegge



Jim Olson

Ray Thune - Co-Captain



Jim Peterson







George Taus



Bruce Brokke



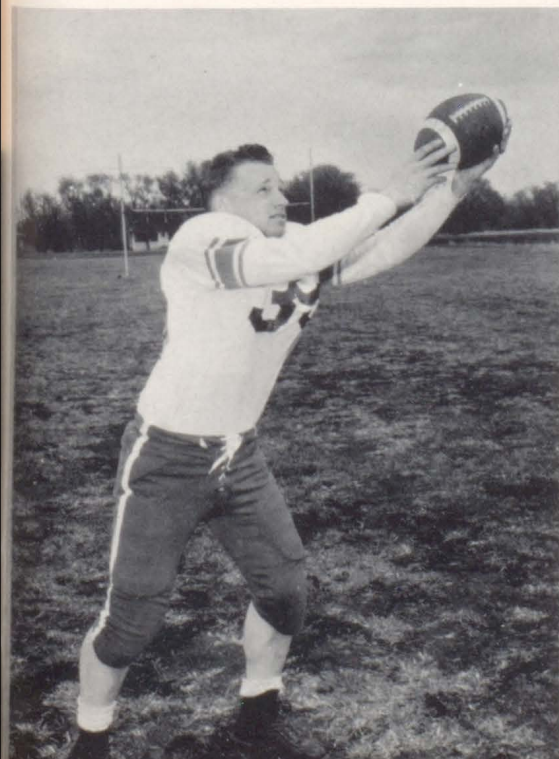
Warren Foss



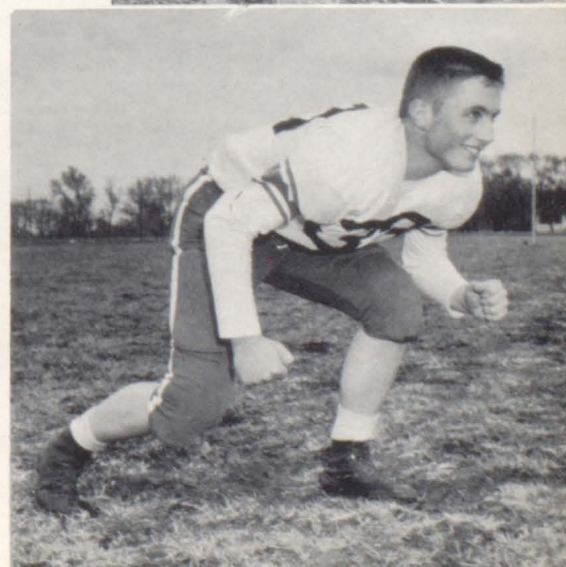
Les Nesvig



Vernon Roningen -  
Co-Captain



Ralph Peterson

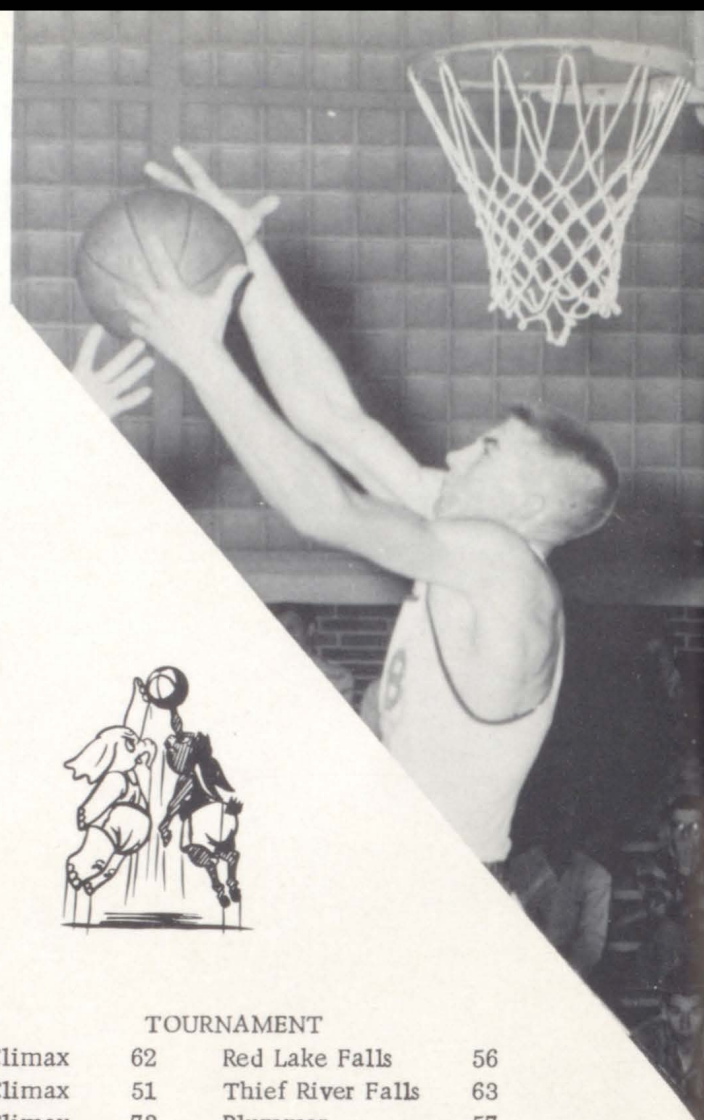




# Basketball

## Schedule 1956-1957

Climax	47	Crookston	44
Climax	56	Crookston A.C.	51
Climax	44	Halstad	62
Climax	63	Fisher	35
Climax	71	Warren	53
Climax	36	Sacred Heart, E.G.	40
Climax	53	Red Lake Falls	37
Climax	85	Hendrum	62
Climax	53	Twin Valley	55
Climax	59	Crookston A.C.	51
Climax	49	Ada	44
Climax	59	Hendrum	42
Climax	27	Crookston	52
Climax	44	Fertile	54
Climax	72	Warren	49
Climax	57	Halstad	68
Climax	49	Hillsboro	45
Climax	67	Lake Bronson	53
Climax	73	Fisher	44
Climax	59	East Grand Forks	52



### TOURNAMENT

Climax	62	Red Lake Falls	56
Climax	51	Thief River Falls	63
Climax	73	Plummer	57

1st ROW, Left to Right: Ralph Peterson, Rand Rogenes, Curtis Wegge, Les Nesvig, Ray Thune, George Taus.  
 2nd ROW: Brent Amundson, Bob Morken, Roger Estenson, Vern Wegge, Gary Monson, Wayne Cayler, Coach-Bud Ellingson.







## "B" Team

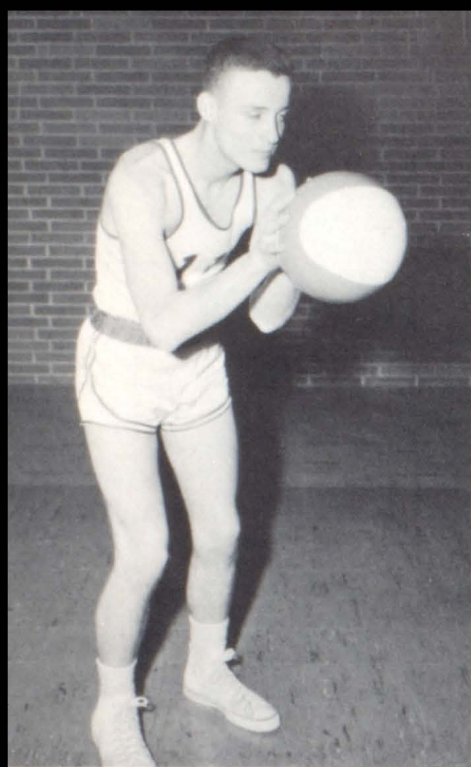
1st ROW, Left to Right: Manager-Kenny Hartman, Ronald Peterson, Larry Hanson, David Sondreal, Earl Hedde, Douglas Johnson, Dennis Taus, Norman Engen, Allan Peterson. 2nd ROW: Richard Estenson, Dick Burd, Wayne Cayler, Ronald Nesvig, David Gilbertson, Rand Rogenes, Kent Peterson, Coach-Mr. Bakke.

## "C" Team

1st ROW, Left to Right: Dennis Thune, Donald Braaten, Kenny Hartman, Duane Lomsdahl, Curtis Hemming, Rodney Spokely. 2nd ROW: Timmy Cooper, Cameron Gray, Jr., Stanford Erickson, David Sondreal, Mylon Moen, Kent Peterson, Jerry Larson. 3rd ROW: Coach-Art Vraa, Stewart Orvik, Bobby Brokke, Allan Peterson, Ronnie Peterson, Myles Eidsmoe, Pat Tendeland.



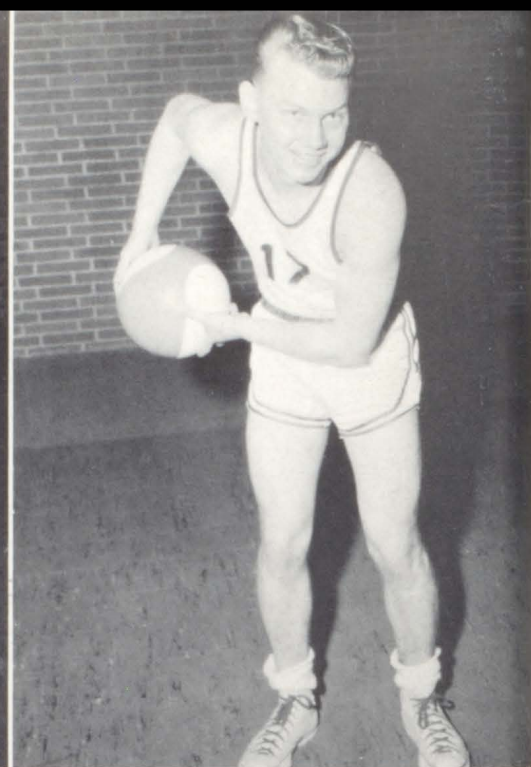




Brent Amundson  
Forward



George Taus  
Guard



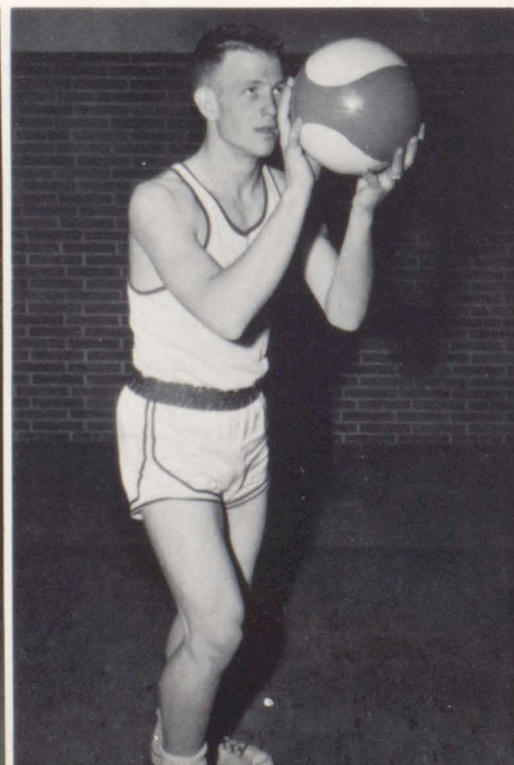
Ray Thune  
Guard



Gary Monson  
Forward

## "Down Went

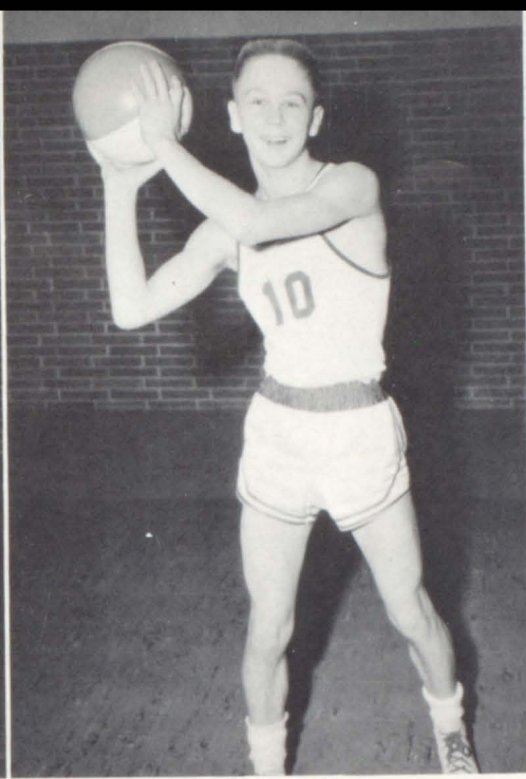
Robert Morken  
Forward



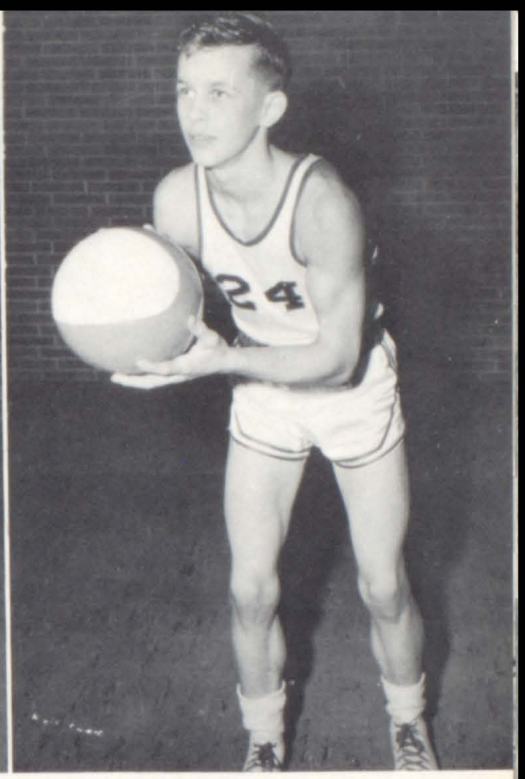




Ralph Peterson  
Guard



Curtis Wegge  
Guard

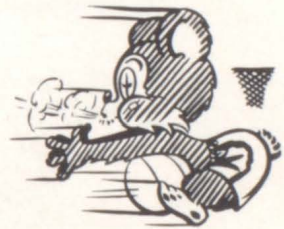


Leslie Nesvig  
Guard



Roger Estenson  
Center

## "Crookston"



Vern Wegge - Captain  
Center







## Cheerleaders

### "A" Team

LEFT to RIGHT: Phyllis Odegard, Elizabeth Holland, Patty Brokke, Sharon Evenson, Barbara Morken. CENTER: Dianne Tonder.

## Cheerleaders

### "B" Team

LEFT to RIGHT: Betty Jane Larson, Jovonne Wollertson, Marjorie Odegard.



## Student Manager

Roger Johnson





1st ROW: George Taus, Vern Wegge, Brne Amundson, Kent Peterson, Harland Morehart, Gary Monson, Ralph Peterson. 2nd ROW: Dennis Taus, Rand Rogenes, Vernon Roningén, Myron Batager, Ray Thune; Coach, Leland Ellingson.

## Baseball



"Batting practice"



"Pre-game warm-up"





## Schedule

Climax. . . . . 22	Hendrum. . . . . 4
Climax. . . . . 8	Crookston. . . . . 9
Climax. . . . . 6	Thief River Falls. . . 4
Climax. . . . . 9	Lake Bronson. . . . . 3
Climax. . . . . 8	Crookston. . . . . 9
Tournaments	
Climax. . . . . 9	Goodrich. . . . . 3
Climax. . . . . 0	Thief River Falls. . . 3
(13 innings)	



## Candid Shots!



"Hard at it, Marcus?"



"What's up there, Judy?"



"Are you boys late again?"

"Seniors are taking the class tournaments"







"What are you boys doing on the roof?"



"Get busy, Peterson!"



"Lady Macbeth?"



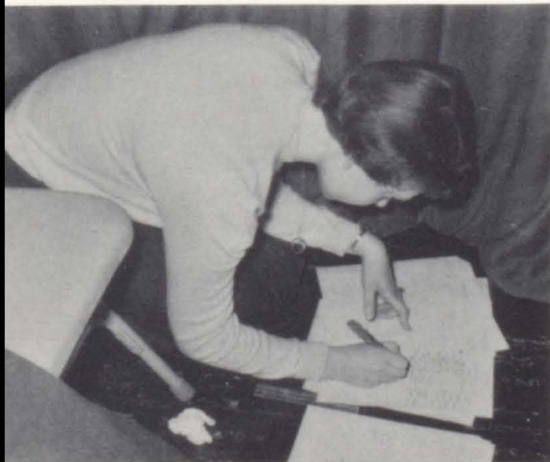
"Elvis?"



"Study hall warfare"



"Have you heard the latest!"



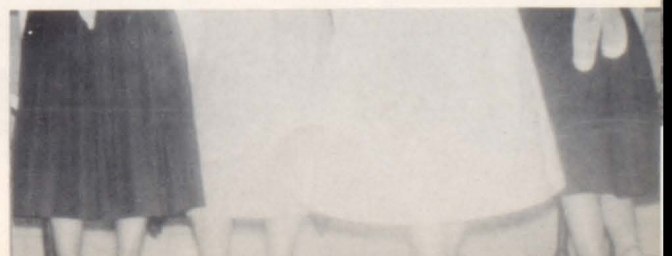
"Hey, Marge, the movie's up front!"



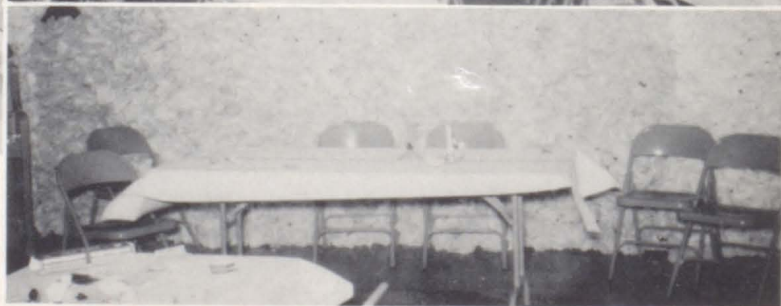
"Village blacksmith"



Remember  
your  
figures,  
girls!"



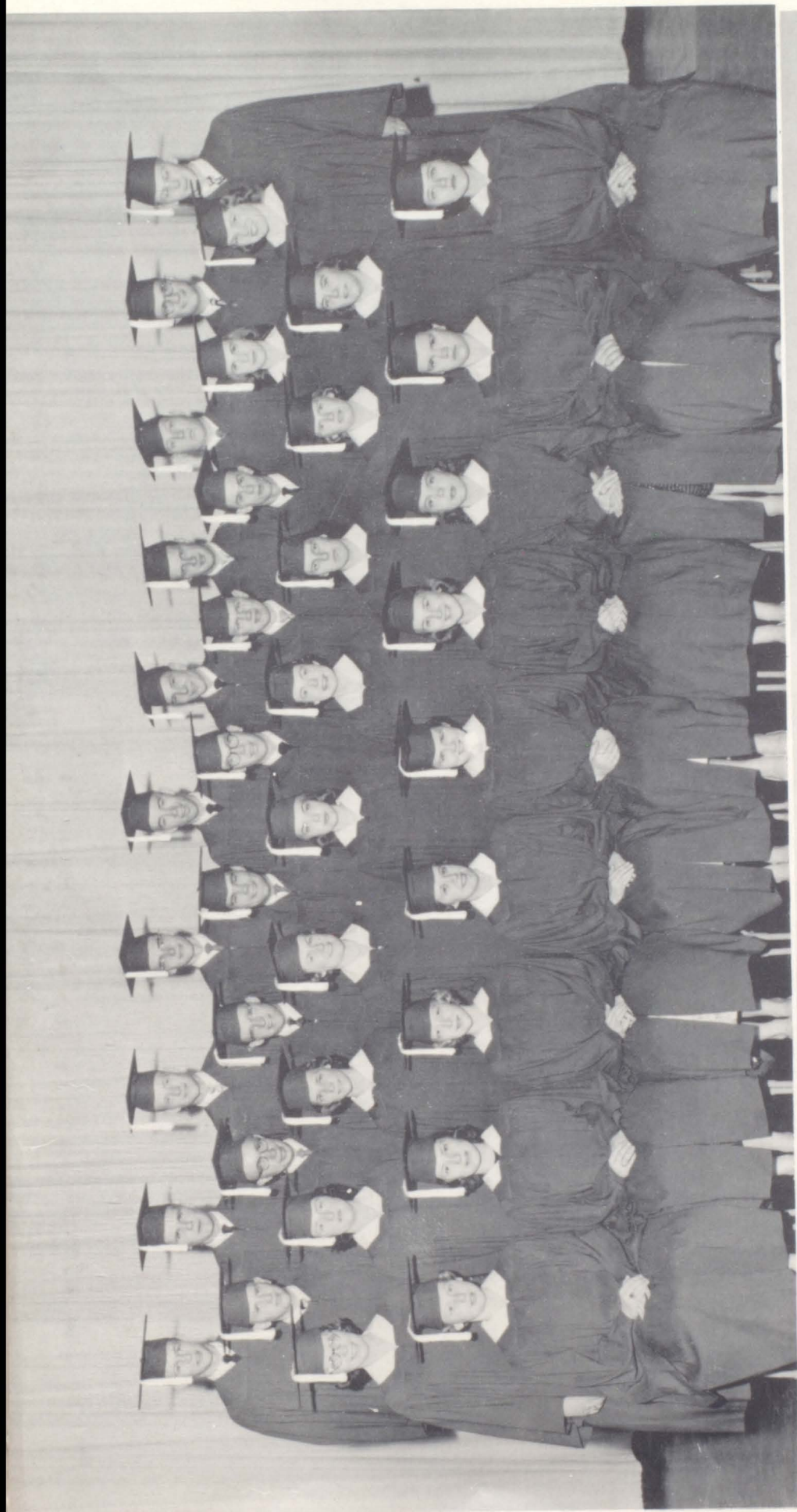




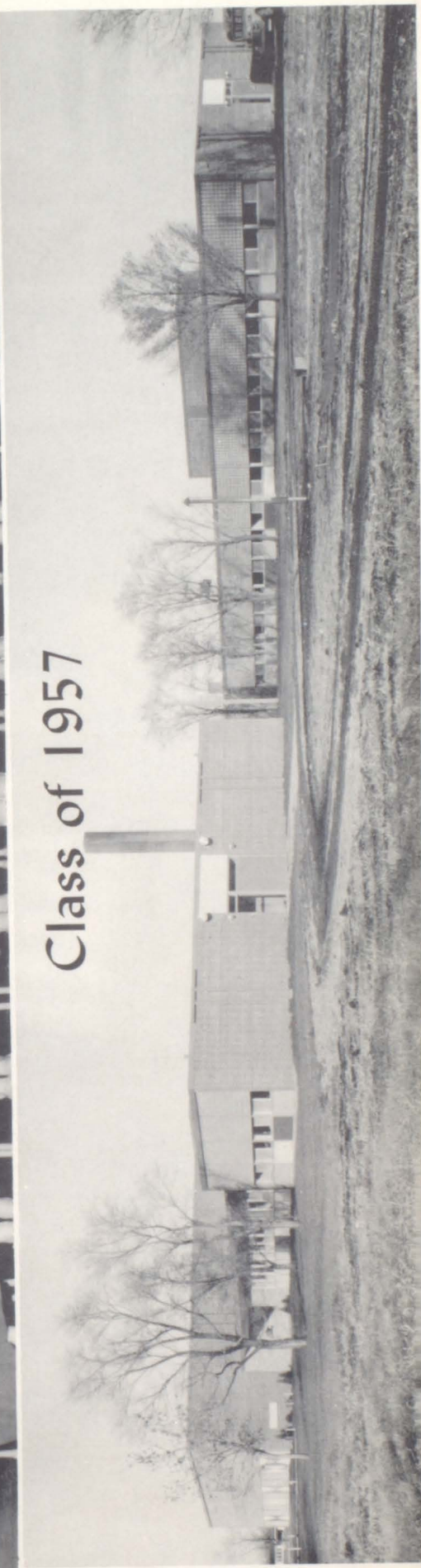
## Junior-Senior Banquet

"Candy Cane Castle"





Class of 1957









# Annual Staff



SEATED left to right: Ralph Peterson, Vernon Roningen, George Nornes, Faith Johnson, Nancy Quirk. STANDING: Sonja Engen, Helen Folstad, Vern Wegge, Merlyn Malme, Ray Thune.

Editor .....	Vernon Roningen
Associate Editor .....	Nancy Quirk
Feature Editor .....	Helen Folstad
Sports .....	Vern Wegge
Artistry .....	Faith Johnson
Business Manager .....	Ralph Peterson
Advertising .....	Sonja Engen
Advertising .....	Ray Thune
Photography .....	Merlyn Malme
Advisor .....	Mr. Nornes

The Viking Staff wishes to express its appreciation to everyone who has helped to make this annual possible. We especially thank Mr. Nornes for his guidance.



"It's all in a night's work."





\$15.00			
Shelly Co-operative Creamery Association	Shelly	Ottertail Power Company Bridgeman Creameries	Crookston Crookston
\$10.00			
Farmers Union Oil Company	Climax	\$ 3.00	
Dr. H. F. Jung - Dentist	Crookston	G. T. A. Elevator	Eldred
Brekken's Men's Store	Crookston	S & L Store	Crookston
Crookston Clinic	Crookston	Bray's	Crookston
First National Bank	Crookston	Crookston Floral	Crookston
Polk County State Bank	Crookston	Maves Optical Company	Crookston
"Total assets \$5 million"		Mason Chevrolet and Buick	Crookston
Harris Music Center	Crookston	\$ 2.50	
Stenshoel Funeral Home	Crookston	Crookston Hotel	Crookston
\$ 5.00			
Climax Standard Service	Climax	\$ 2.00	
Climax Implement	Climax	Kobbervig Meat Market	Climax
Ireland's Lumber Yard	Climax	Avis Christopherson	Climax
Thune's Store	Climax	Strommen's Cafe	Climax
Howland's Hardware	Climax	Mildred Jevning	Climax
Ernest Wollertson Store	Climax	Viking Cafe	Climax
Gil Boyer Insurance	Climax	Eidsmoe's Cafe	Nielsville
Orville Brokke	Climax	Hoie's Market	Nielsville
"Standard Oil Agent"		Boe's Hatchery	Nielsville
E. P. Evenson's Store	Eldred	Ameson Cities Service	Eldred
Farmer's Elevator	Eldred	Munter's Motor Service	Shelly
P. V. Elevator	Shelly	Sid's Service Station	Shelly
Farmer's Co-operative Elevator & Lumber Company	Shelly	New York Store	Crookston
Shelly Meat Market		Quality Cleaners	Crookston
Dybing's L. B. Hartz Store	Shelly	C. O. D. Clothing Store	Crookston
Climax Grain Co-op Association	Climax	Penny's	Crookston
Bethesda Hospital Association	Crookston	Dr. Frank Jung - Dentist	Crookston
Northwestern Clinic	Crookston	Barlow Furniture	Crookston
Munn's Jewelry	Crookston	Klein's	Crookston
Emerson Insurance Agency	Crookston	Erickson Meat Market	Crookston
Johnson's Jewelry	Crookston		
Dr. G. Hendrickson - Optometrist	Crookston	\$ 1.00	
Crookston Recap and Supply	Crookston	Smith Garage	Nielsville
Houske Funeral Home	Crookston	Cash Mercantile Company	Nielsville
Zitzer's Floral	Crookston	Mykelby's Cafe	Eldred
Saul Motor Company	Crookston	Cora's Tot and Teen Shop	Shelly
K. R. O. X.	Crookston	Amundson's Cafe	Shelly
Peterson-Biddick Company	Crookston	Curly's Cafe	Shelly
Consumer's Gas	Crookston	Ellingson's Fairway Store	Shelly
		Beyer's Implement	Shelly
		Ruetell's	Crookston



