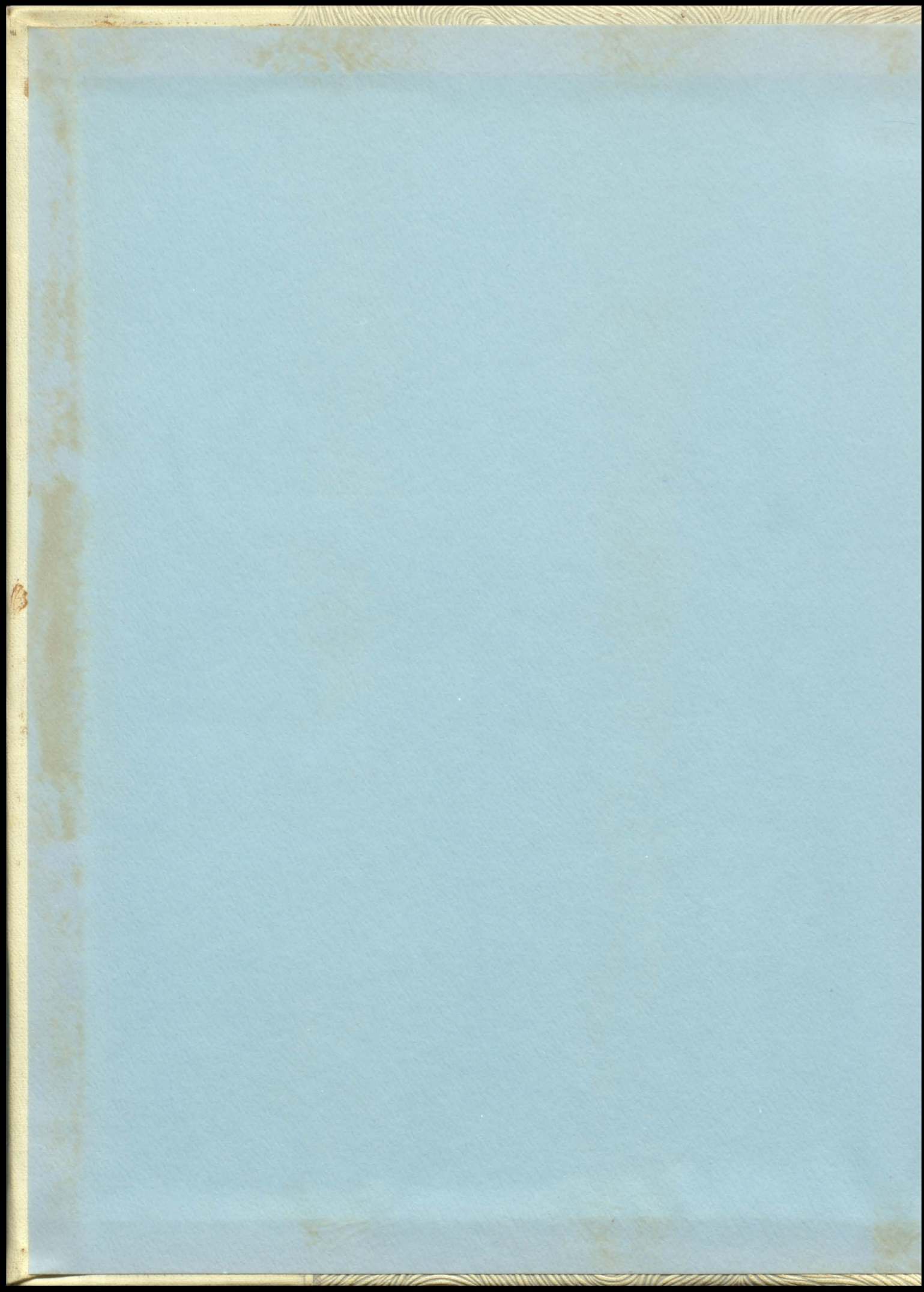
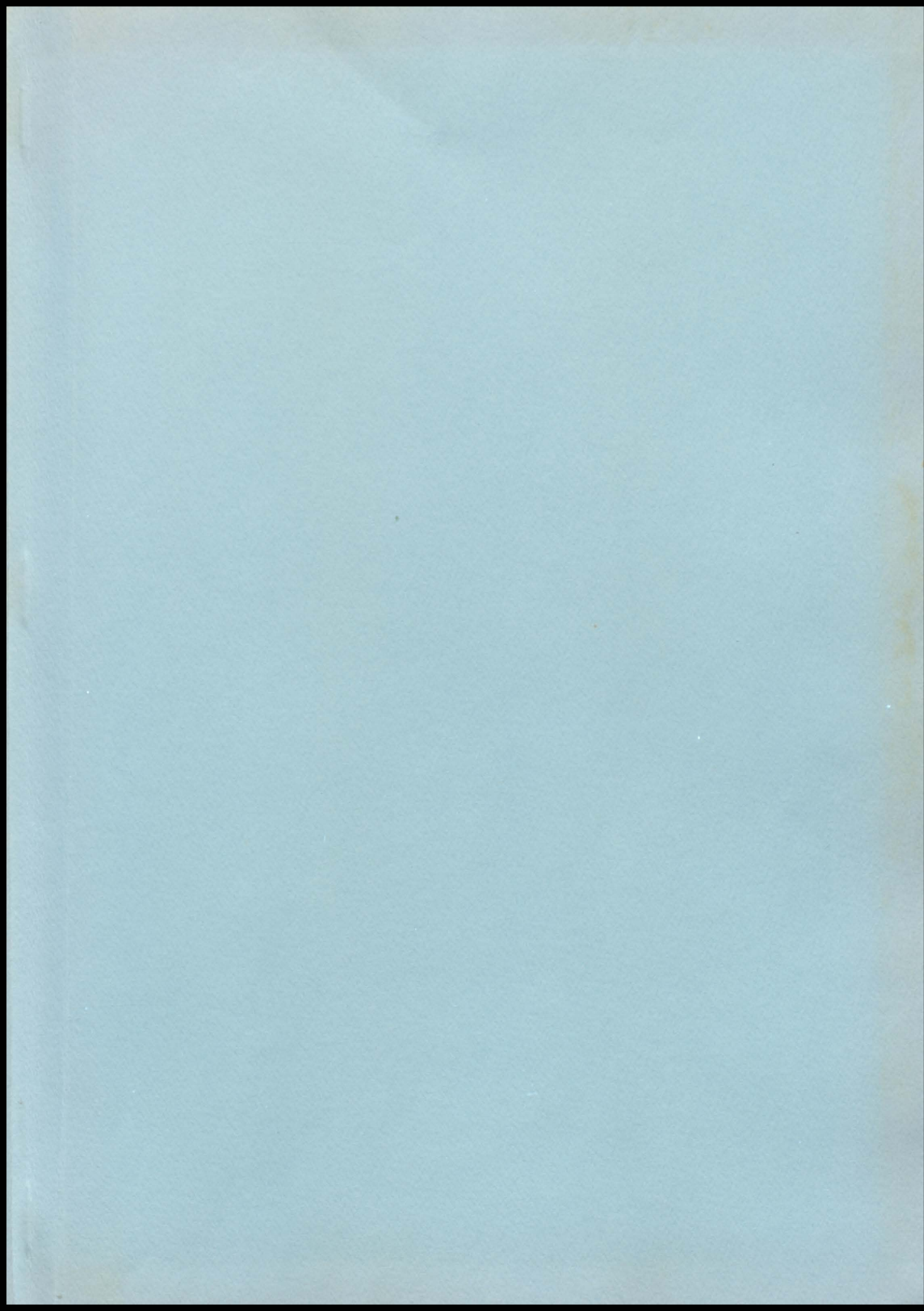


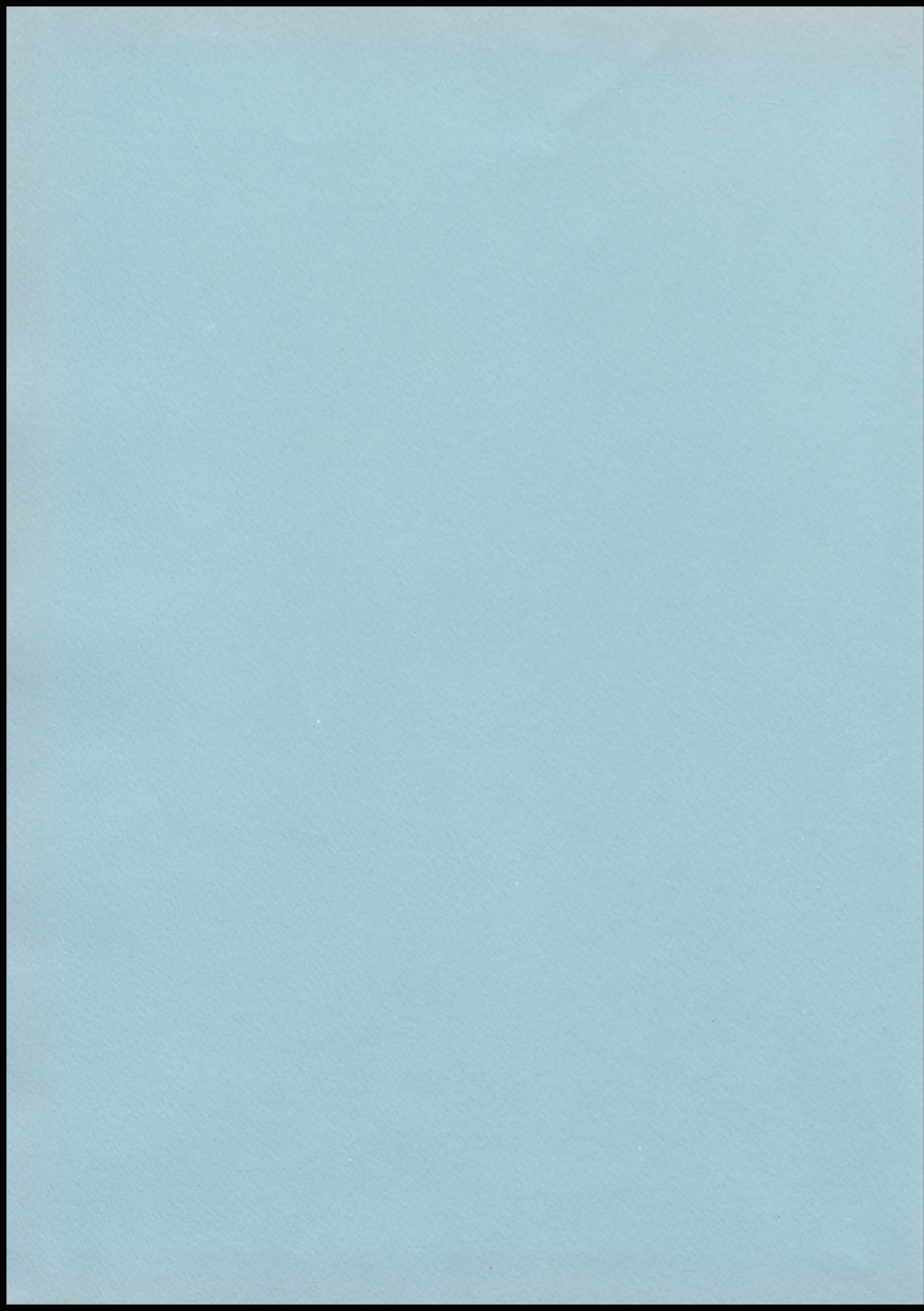
hundred fifty five

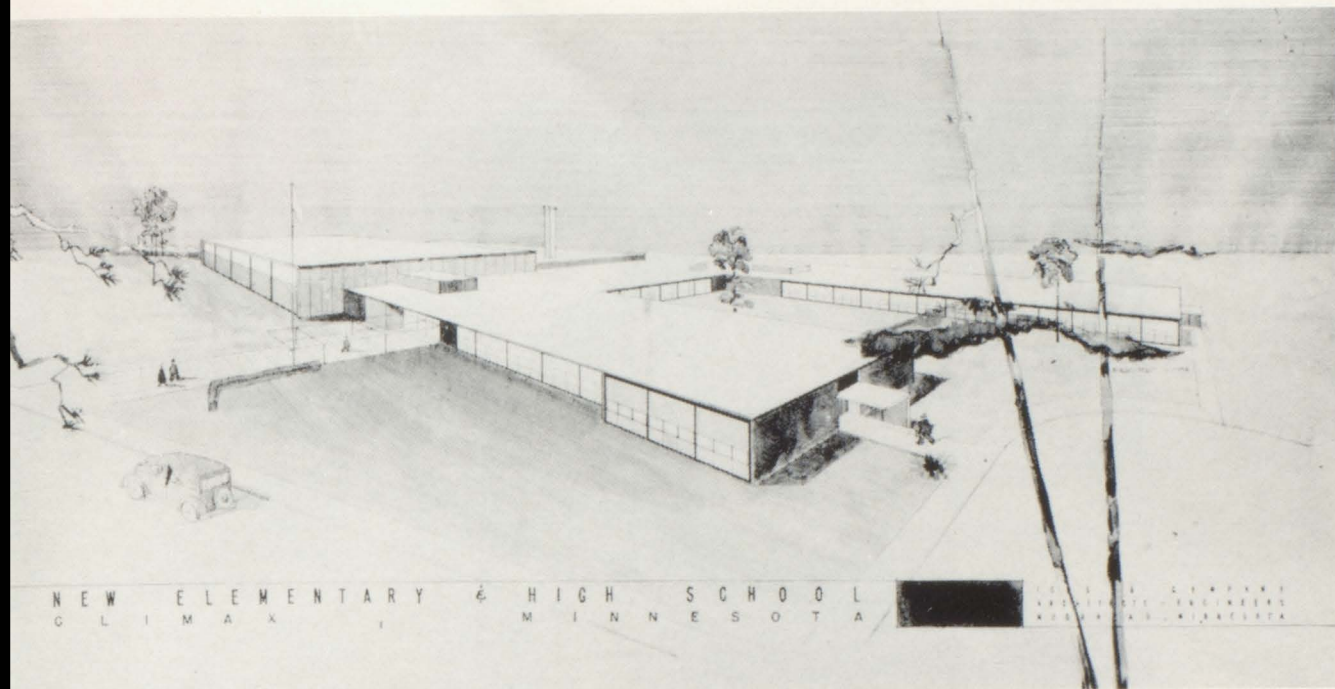
Viking

hundred









THE 1955 VIKING

presented by the

Senior Class

and

Viking Staff

of

Climax High School

Climax, Minnesota



Dedication

We dedicate this annual to O. T. Olsen who has served faithfully as superintendent of Climax High School for twenty-four years.



Superintendent

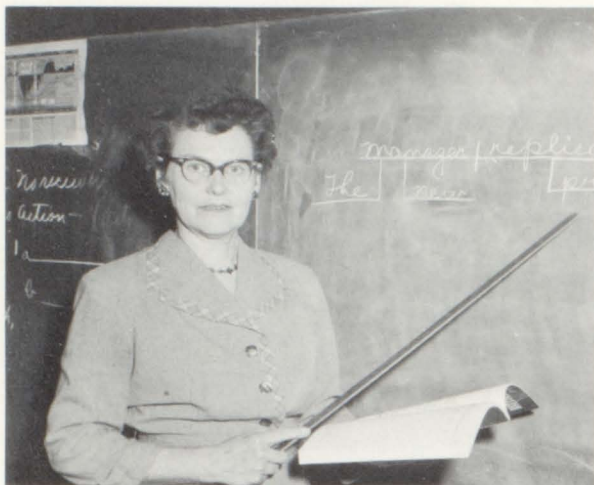
MR. O. T. OLSEN

Faculty and Administration

Principal

MR. D. J. BAKKE





MRS. OLSEN-English and Girls Phy. Ed.



MRS. KUNKEL-English and History.



MR. NORNES-Agriculture and Shop.



MR. MJOLSNES-History, Biology, and Coach.



MR. VRAA-Science, Mathematics, and Coach.



MRS. DEITZ - Home Economics.



MISS TRANBY - 1st and 2nd Grades.



MRS. MILLER - School Nurse.



MISS CONDIFF - 5th and 6th Grades.



MRS. WALGREN - 3rd and 4th Grades.



Left to Right - Oscar Romo, Knute Boe, Arnold Amundson, George Keller, Orville Vang, Louis Letnes.

Board of Education

Valedictorian



ELROY FOLSTAD

Salutatorian



ARLENE EIDSMOE

Students



Seniors



Arlene Eidsmoe-Treasurer, Sandra Wollertson-Vice President, Marlene Koppang-President, Ella Bjornstad-Secretary.

In the fall of '51 thirty-nine "energetic" freshmen started their first year at Climax High School. The highlight of this year was when the sophomore class welcomed us by our freshmen initiation. In the beginning of the year, our class helped form the foundation for the later well-known Climax High School Band.

In our exciting sophomore year, eleven of our students were chosen as waiters and waitresses for the Junior-Senior banquet.

We presented the hilarious play, "Meet Corliss Archer" during the first part of our junior year. On February 24, 1954, an unforgettable tragedy occurred when our school was razed by fire. Our misfortune did not seem too difficult when we were able to give our beautiful Junior-Senior Banquet, our theme being "Stars in Your Eyes."

Our Class now consists of twenty-nine well informed students who have taken part in numerous extra curricular activities which have made our days at Climax High School more enjoyable.



JANIS ABRAMS
F. H. A. 1, 2; G. A. A.
1, 2, 3; Band 1, 2, 3,
4; Chorus 1, 2; Glee
Club 1, 2, 3.

JOAN ABRAMS
F. H. A. 1, 2; G. A. A.
1, 2, 3; Band 1, 2, 3,
4; Pep Band 3; Chorus
1, 2; Glee Club 1, 2,
3.

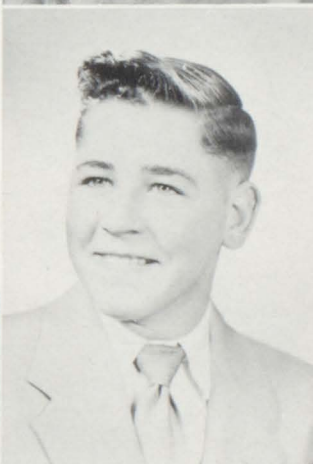


MARLYN ANDERSON
F. H. A. 1, 2, 4.



MARJORIE AUKLAND
F. H. A. 1, 2, 3, 4; G.
A. A. 1, 2, 3, 4; Treas.
1; Glee Club 1, 2; "Meet
Corliss Archer" 3.

OLGA AURE
F. H. A. 1; G. A. A. 4;
F. T. A. 4; Chorus 4;
Glee Club 1, 2, 3, 4;
Annual Staff 4.



RODGER BANGEN
F. F. A. 1, 2, 3, 4; Senti-
nal 3; Class Treas. 2.



ELLA BJORNSTAD
F. H. A. 1, 2, 3, 4; G.
A. A. 1, 2, 3, 4; Band
1, 2, 3, 4; Pep Band 2;
Chorus 1, 2, 3, 4; Glee
Club 1, 2, 3, 4; Pres.
4; Triple Trio 3; Class
Pres. 3; Sec. 4; "Meet
Corliss Archer" 3.

TOM BOYER
F. F. A. 1, 2, 3, 4;
Track 2, 3; Annual
Staff 4; Basketball
Manager 1; Judging
Team 3, 4.





ARLEN BRAATEN
F. F. A. 1, 2, 3, 4;
Chorus 2, 3, 4; Glee
Club 1, 2; Camera
Club 2, 3; "Meet Cor-
liss Archer" 3.

RONALD BRINK
F. F. A. 1, 2, 3, 4;
Judging Team 2, 3, 4;
Band 1, 2, 3, 4; Pep
Band 2; Chorus 1, 2, 3,
4; Sec. 3; Glee Club
1, 2; Class Sec.-Treas.
1; Cheerleader 3; Bas-
ketball 1, 2; Baseball
2; Football 4; "C"
Club 4; One Act Play
2; Declamation 2; An-
nual Staff 4.



GENE
CHRISTOPHERSON
F. F. A. 1, 3, 4; Band 1,
2, 3, 4; Chorus 3, 4; Bas-
ketball 1, 2, 3, 4; Base-
ball 2, 3; Football 4;
"C" Club 3, 4; Class
Sec. 2; Camera Club 2,
3; "Meet Corliss Archer"
3; Carnival Comm. 4;
Annual Staff 4.



ARLENE EIDSMOE
F. H. A. 1, 2, 3, 4; Song
Leader 3, 4; G. A. A. 1,
2, 3, 4; Pres. 4; Band 1,
2, 3, 4; Pres. 4; Pep Band
2; Pep Squad 3; Chorus
1, 2, 3, 4; Glee Club 1,
2, 3, 4; Triple Trio 3;
Class Treas. 4; Carnival
Comm. 4; Assistant Mgr.
4; "Meet Corliss Archer"
3; Annual Staff 4.

ELROY FOLSTAD
F. F. A. 1; Band 1, 2, 3,
4; Assistant Mgr. 2; Mgr.
3; Vice Pres. 2; Chorus
1, 2, 3, 4; Librarian 2;
Glee Club 1, 2; Basket-
ball 1, 2, 3, 4; Baseball
2, 3, 4; Football 4; "C"
Club 2, 3, 4; Track 1, 2;
Class Pres. 1; Treas. 3;
Carnival Comm. 2, 3;
4; Manager 3, 4; Camera
Club 2, 3; "Meet Cor-
liss Archer" 3; Annual
Staff 4.



JAMES HAGEN
F. F. A. 1; Chorus 1, 2;
Glee Club 1, 2; Camera
Club 2, 3; "Meet Corliss
Archer" 3.



JANICE IRWIN
F. H. A. 1, 2, 3, 4;
Historian 4; G. A. A.
2, 3, 4; Treas. 3; Band
1, 2, 3, 4; Pep Band 2;
Pep Squad 3; Chorus 1,
2, 3, 4; Glee Club 2,
3, 4; Treas. 3; Triple
Trio 3; "Meet Corliss
Archer" 3.

ARLEN IVERSON
F. F. A. 1, 2, 3.





DONALD JOHNSON
F. F. A. 1, 2, 3, 4;
Chorus 1, 2; Glee Club
1, 2; Football 4; Bas-
ketball 1, 2.

MARLENE KOPPANG
F. H. A. 1, 2, 3, 4;
Chorus 1, 2, 3, 4; Glee
Club 1, 2, 3, 4; Band
1, 2, 3, 4; Pep Band 1;
G. A. A. 1, 2, 3, 4;
Class Vice Pres. 1;
Pres. 4; "Meet Corliss
Archer" 3.



JEROME LANDGAARD
F. F. A. 1, 2, 3, 4; Re-
porter 3; Band 1, 2, 3, 4;
Camera Club 3; Baseball
1, 2, 3, 4; Class Pres. 2;
"Meet Corliss Archer"
3; Annual Staff 4.



SHIRLEY NELSON
F. H. A. 1, 2; G. A. A. 1,
2, 3, 4; Chorus 1, 2, 3,
4; Glee Club 2, 3, 4.

SAM NESVIG
F. F. A. 1, 2, 3; Treas.
4; Judging Team 2, 3, 4;
Track 2; Football 4;
Baseball 2; "Meet Cor-
liss Archer" 3.



CARL OSTGAARD
F. F. A. 1, 2, 3, 4; Judg-
ing Team 3, 4; Glee
Club 3, 4.



LANNY ROGENES
F. F. A. 1, 2, 3, 4;
Basketball 1, 2, 3, 4;
"C" Club 2, 3, 4.

BORGHILD SANDVIK
F. H. A. 1, 2, 3, 4; F.
T. A. 3, 4; Pres. 4;
Band 1, 2, 3; Chorus 1,
3, 4; Librarian 3; Glee
Club 1, 2, 3, 4; Li-
brarian 3; "Meet Cor-
liss Archer" 3; Carn-
ival Comm. 4.





SHIRLEY SCHROEDER
F. H. A. 1, 2, 3; G. A.
A. 3, 4; F. T. A. 4;
Band 1, 2; Chorus 1, 3,
4; Glee Club 1, 2, 3,
4; Class Sec. 1.

LUCELLA SWENSON
F. H. A. 1, 2; G. A. A.
1, 2, 3, 4; Glee Club
1, 2, 3, 4.



PERNELL SWENSON
F. F. A. 1, 2, 3, 4; Pres.
3; District Sentinel 3;
Judging Team 2, 3; Cho-
rus 2, 3, 4; Glee Club 1,
2.



RUSSEL SYLVESTER
F. F. A. 1, 2, 3, 4; Vice
Pres. 3; Judging Team 2,
3, 4; Track 2; Football
4; Baseball 1, 2, 3, 4.



JO ANN THORESON
F. H. A. 1, 2, 3, 4; Treas.
3; G. A. A. 2, 3, 4; Vice
Pres. 2; Band 1, 2, 3, 4;
Pep Band 2; Pep Club 3;
Chorus 1, 2, 3, 4; Pres.
3; Glee Club 2, 3, 4;
"Meet Corliss Archer" 3;
Carnival Queen 4.



SHELDON WEGGE
F. F. A. 1, 2, 3, 4; Glee
Club 1, 2.

SANDRA
WOLLERTSON
F. H. A. 1, 2, 3, 4;
Sec. 3; Vice Pres. 4;
State Sec. 4; G. A. A.
1; Band 1, 2, 3, 4; Pep
Club 3; Chorus 1, 2, 3,
4; Glee Club 1, 2, 3,
4; Pres. 3; Class Vice
Pres. 2, 4; "Meet Cor-
liss Archer" 3; Cheer-
leading 1, 2, 3, 4;
Captain 3; Carnival
Committee 3; Annual
Staff 4; State Comm.
F. H. A. 4.



Juniors



Bruce Amundson-Secretary, Janice Wegge-Treasurer, Lola Rognlie-President, David Monson-Vice President.

Since our entrance into high school in the fall of 1952, this small class of seventeen has contributed much to the school.

We have been active in all school activities- band, chorus, glee club, dramatics, and sports.

We have had three big accomplishments this year. Our class play "The Girl Next Door", the annual magazine drive, and the Junior-Senior Banquet which was held in May.



BRUCE AMUNDSON
F. F. A. 1, 2, 3; Sec. 2; V. Pres. 3; Judging Team 1, 2, 3; Band 1, 2, 3; Librarian 1; V. Pres. 3; Chorus 1, 2, 3; Librarian 3; Glee Club 1; Baseball 1, 2, 3; Football 3; Basketball 1, 2, 3; "C" Club 2, 3; Camera Club 1; Class Pres. 1, 2; Sec. 3; "The Girl Next Door" 3.



KENNETH BOE
F. F. A. 1, 2, 3; Band 1, 2, 3; Camera Club 1, 2; "The Girl Next Door" 3



JAMES CAYLER
F. F. A. 1, 2; Basketball 1, 2; Manager 3; Baseball 1, 2; Track 2.

RODNEY COOPER
F. F. A. 1, 2, 3; Camera Club 1, 2.



NOEL ESTENSON
F. F. A. 1, 2, 3; Treas. Pres.; Judging Team 1, 2; Band 1, 2, 3; Chorus 1, 2, 3; Sec.-Treas.; Glee Club 1; Basketball 1, 2, 3; Baseball 1; Football 3; "C" Club 3; Camera Club 2.



DARLENE GORDON
F. H. A. 1, 2, 3; G. A. A. 1, 2; Band 2, 3; Chorus 1, 2, 3; Librarian 2; Glee Club 1, 2, 3; Vice Pres. 3; Triple Trio 2; Pep Club 2; "The Girl Next Door" 3.

MARGARET GROSFIELD
F. H. A. 1, 2; G. A. A. 1, 2, 3; F. T. A. 2, 3; Sec. 3; Glee Club 1, 2, 3.



JOAN GROVE
F. H. A. 1, 2, 3; G. A. A. 1, 2, 3; F. T. A. 1, 2, 3; Chorus 1, 2, 3; Chorus 1, 2, 3; Glee Club 1, 2, 3; "The Girl Next Door" 3.



FERN LETNES
F. H. A. 1, 2, 3; Pres. 3; G. A. A. 1, 2, 3; Reporter 1; Recorder 3; Band 1, 2, 3; Sec.-Treas. 3; Pep Band 1; Pep Club 2; Chorus 1, 3; Librarian 3; Glee Club 1, 2, 3; Libr. 1; V. Pres. 3; Camera Club 1; Class Treas. 2; Declam. 2, 3; Carnival Comm. 3; "The Girl Next Door" 3.

DAVID MONSON
F. F. A. 1, 2; Judging Team 1, 2; Band 1, 2, 3; Pres. 2; Chorus 1, 2, 3; Glee Club 1; Basketball 1, 2, 3; Baseball 1, 2, 3; Football 3; "C" Club 1, 2, 3; Carnival Comm. 2; Camera Club 1, 2; Pres. 2; Class Pres. 2; V. Pres. 3; "The Girl Next Door" 3.





WELLINGTON
NELSON
Football 3; "C" Club
3.

LOLA ROGNLIE
F. H. A. 1, 2, 3; Sec.
3; G. A. A. 1, 2, 3;
Sec. 3; Band 1, 2, 3;
Librarian 3; Chorus 1,
3; V. Pres. 3; Glee
Club 1, 2, 3; Declam.
2, 3; One Act Play 1;
Cheerleading 1, 2, 3;
Class Sec. 1; Pres. 3;
Camera Club 1; "The
Girl Next Door" 3.



ORIS SEMELING
F. F. A. 1, 2, 3; Vice
Pres. 2; Band 1, 2, 3.



ANNETTE THUNE
F. H. A. 1, 2, 3; G. A.
A. 1, 2, 3; Recorder 1;
F. T. A. 1; Band 1, 2;
3; Pep Band 1; Pep Club
2; Chorus 1, 2, 3; Glee
Club 1, 2, 3.



JANICE TONDER
F. H. A. 1, 2, 3; G. A.
A. 1, 2, 3; Recorder 2;
F. T. A. 1, 3; Sec. 3;
Band 1, 2, 3; Chorus 1,
2, 3; Glee Club 1, 2, 3;
Triple Trio 2; Class Sec.
2; Cheerleader 2, 3;
"The Girl Next Door" 3.



CAROL VANG
F. H. A. 1, 2; G. A.
A. 1, 2; Band 1, 2, 3;
Pep Club 2; Chorus 1,
2, 3; Glee Club 1, 2,
3.

JANICE WEGGE
F. H. A. 1, 2, 3; G. A.
A. 1, 2; Band 1, 2, 3;
Lib. 3; Chorus 1, 2, 3;
Glee Club 1, 2, 3; Lib.
2; Pep Club 2; Class
Treas. 3; "The Girl
Next Door" 3.





Marlys Bjorge
Bruce Brokke
Patty Brokke



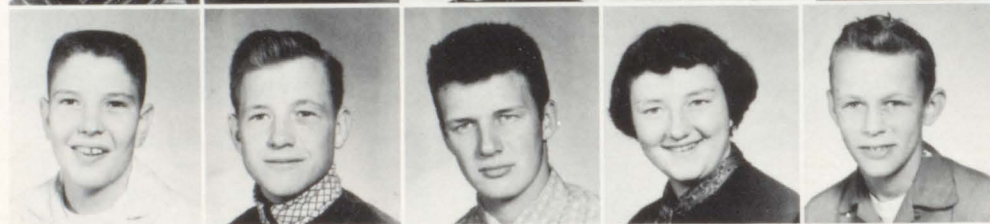
Shirley Dybing
Sonja Engen
Roger Estenson
Sharon Evenson



Helen Folstad
Warren Foss
Aldine Gray
Marjorie Hanson
Elizabeth Holland



Judy Jacobson
Faith Johnson
Sonja Johnson
Allen Koppang
Marlene Larson



Merlyn Malme
Robert Morken
Harlan Morehart
Sharon Nelson
Leslie Nesvig



James Olson
Geraldine Peterson
James Peterson
Ralph Peterson
Nancy Quirk



Virginia Ranten
Vernon Roningen
Marlys Spokley
George Taus
Ray Thune



Maxine Vetterm
Curtis Wegge
Vern Wegge
Jovonne Wollertson
Juneal Wollertson



Brent Amundson
David Aukland
Floyd Aure
Audrey Bjorge
Carol Braaten

Luverne Eidsmoe
Bonnie Gilbertson
Mildred Grove
Eileen Hartman
Darlene Hettervig

Pernell Holland
Betty Larson
Ronald McCauley
Arnold Moen
Gary Monson

Barbara Morken
Phyllis Odegaard
Beverly Quirk
Ardys Reel
Jeanine Rogenes

James Rowley
Olga Sandvik
Ronald Semeling
Dianne Tonder
Kay Vang

Freshmen



Sophomore Class Officers

Left to right: Marjorie Hanson, Sharon Evenson, Ralph Peterson, Judy Jacobson.



Freshman Class Officers

Left to right: Ronald Semeling, Phyllis Odegaard, Brent Amundson, Gary Monson.



Seventh And Eighth

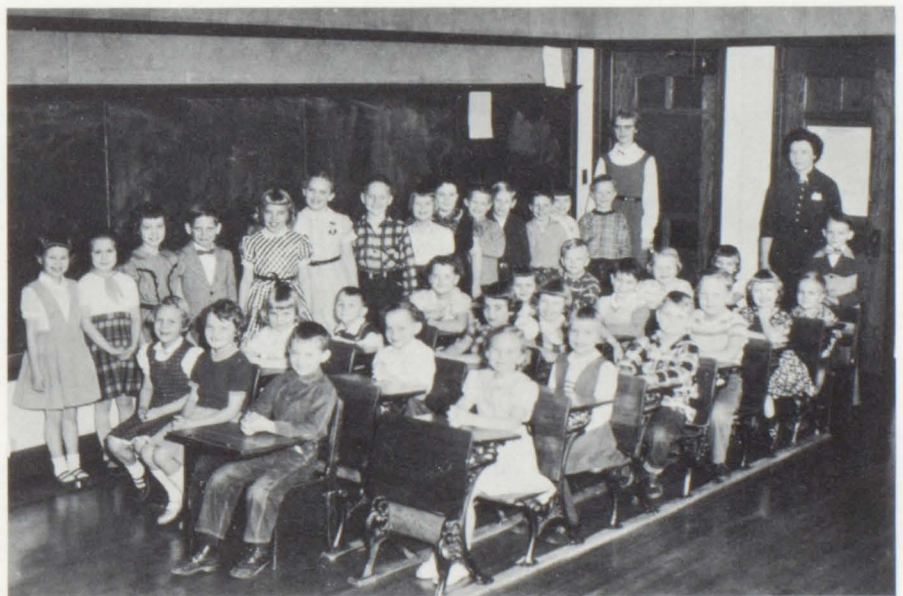
1ST ROW, left to right: Nancy Evenson, Sherry Amundson, Eunice Grove, Gail Sondral, Judy Sheridan, Barbara Hartman, La Mae Lomdsal, Joyce Quirk, La Dell Lomdsal. 2ND: Norman Engen, Dennis Taus, Larry Hanson, Marlowe Howland, Marshall Cooper, Donald Hemming, Johnny Lian, Brent Larson, Bruce Larson. 3RD: Robert Braaten, Ronald Nesvig, Richard Estenson, Christie Braaten, Kenneth Grove, Darrel Paulsrud, Ruth Merkins, Gail Grover, Carol Christopherson. 4TH: Darrel Peterson, Jerry Vang, David Gilbertson, Roger Holland, Vernon Larson, Mylan Moen, Dallas Stortroen, Truman Johnson, Cameron Gray.



Grades Five And Six



Grades Three And Four



Grades One And Two



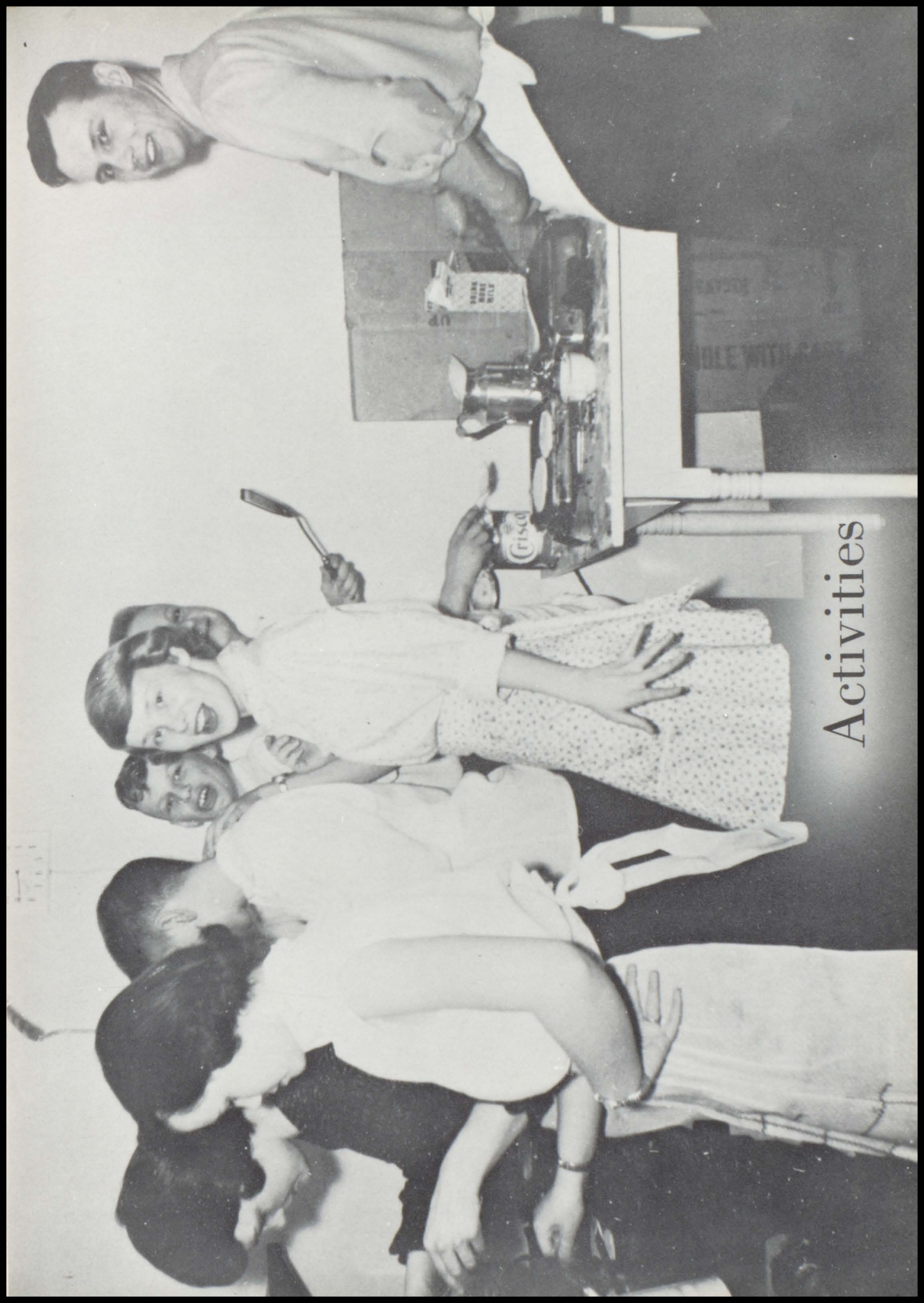
"Service with a smile."



"Good old Marcus."



Activities





Chorus

FIRST ROW, from left to right: Mildred Grove, Dianne Tonder, Ardys Reel, Sandra Wollertson, Patty Brokke, Judy Jacobson, Marlys Bjorge, Jovonne Wollertson, Shirley Nelson, Sonja Engen, Marlys Spokley, Barbara Morken, Phyllis Odegard, Virginia Ranten, Marjorie Hanson. 2ND: Darlene Hettervig, Shirley Schroder, Janice Irwin, Joan Grove, Audrey Bjorge, Carol Braaten, Jo Ann Thoreson, Aldine Gray, Helen Folstad, Sharon Nelson, Juneal Wollertson, Annette Thune, Olga Sandvik, Luverne Eidsmoe, Jeanine Rogenes, Kay Vang. 3RD: Ronald Brink, Merlyn Malme, Ella Bjornstad, Borghild Sandvik, Lola Rognlie, Janis Abrams, Janice Wegge, Carol Vang, Darlene Gordon, Joan Abrams, Fern Letnes, Janice Tonder, Olga Aure, Arlene Eidsmoe, Leslie Nesvig, Vernon Roningen, Pernell Swenson. 4TH: Director, Mr. Bakke; Allen Koppang, Gary Monson, Ray Thune, Brent Amundson, David Aukland, David Monson, Roger Estenson, Arlen Braaten, Noel Estenson, Gene Christopherson, Bruce Brokke, Bruce Amundson, Elroy Folstad, Ronald Mc Cauley, Floyd Aure.

Our Mixed Chorus under Mr. Bakke's direction has a membership of sixty-four. We entered the spring festivals and took part in Commencement and Baccalaureate Activities. At Christmas we participated in the annual Christmas Program. Last year we rated "A" in the District and "B" in the Regional Festivals, and gave excellent performances this year also.



Girls Glee Club

FRONT ROW, from left to right: Dianne Tonder, Ardys Reel, Sandra Wollertson, Patty Brokke, Judy Jacobson, Marlys Bjorge, Jovonne Wollertson, Shirley Nelson, Sonja Engen, Marlys Spokley, Barbara Morken, Phyllis Odegard, Virginia Ranten. 2ND: Janice Irwin, Joan Grove, Audrey Bjorge, Carol Braaten, Jo Ann Thoreson, Aldine Gray, Helen Folstad, Sharon Nelson, Juneal Wollertson, Annette Thune, Olga Sandvik, Mildred Grove. 3RD: Shirley Schroder, Nancy Quirk, Sharon Evenson, Maxine Vetter, Luverne Eidsmoe, Kay Vang, Jeanine Rogenes, Joan Abrams, Lucella Swenson, Olga Aure, Arlene Eidsmoe, Marjorie Hanson. 4TH: Margaret Grosfield, Ella Bjornstad, Borghild Sandvik, Lola Rognlie, Janis Abrams, Janice Wegge, Carol Vang, Darlene Gordon, Fern Letnes, Elizabeth Holland, Janice Tonder, Darlene Hettervig, Director: Mr. Bakke.



Future Teachers Of America

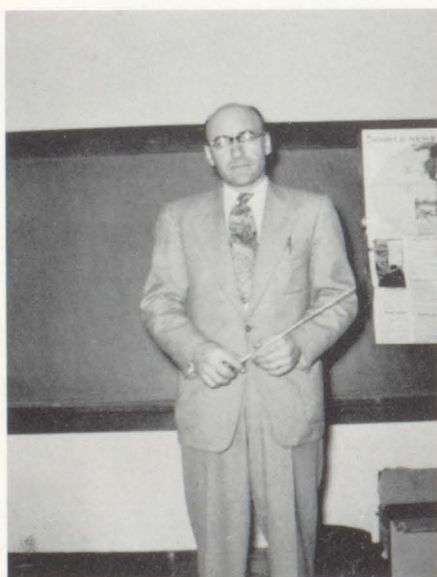
FIRST ROW, from left to right: Shirley Schroder, Margaret Grosfield, Borghild Sandvik, Dianne Tonder, Patty Brokke. 2ND: Marjorie Hanson, Joan Grove, Janice Tonder, Olga Sandvik. 3RD: Ardys Reel, Olga Aure, Sharon Nelson, Elizabeth Holland, Jovonne Wollertson.



Senior

Band Mother's Club

President	Mrs. Lloyd Sondral
Vice President	Mrs. Melvin Eidsmoe
Recording Secretary	Mrs. Gladys Sisted
Financial Secretary	Mrs. John Koppang
Treasurer	Mrs. John Swenson



Mr. Langbell
Director

Our sixty-four piece band under the capable direction of Mr. Langbell is one of the most outstanding activities of our school. During the past four years we have received "A" ratings in the District Music Festivals and one "B*" and three "A" ratings in the State Area Contests.

Four years ago Mr. Langbell organized our band and a year later our Band Mother's Organization raised enough money for new uniforms. The fire which destroyed our school also destroyed our band caps and various instruments. The Band Mother's are now replacing these instruments. We want to thank them for all the work and effort they have shown to make our band a success.



Band

Band Personnel

CLARINETS- Arlene Eidsmoe, Annette Thune, Bruce Amundson, Noel Estenson, Lola Rognlie, Carol Braaten, Kenneth Boe, Dorthy Braaten, Fern Letnes, Sandra Wollertson, Carol Christopherson, Janis Abrams, Pernell Swenson, Marilyn Larson, Judy Jacobson, Katherine Holmstad. FLUTES- Borghild Sandvick, Ella Bjornstad, Darlene Hettervig, Marlene Koppang, Sonja Engen, Sharon Evenson. SOPRANO SAX.- Dianne Tonder. OBOE- Laverne Eidsmoe. CORNETS- Gene Christopherson, Allen Koppang, Carol Vang, Elroy Folstad, Gary Monson, Bonnie Gilbertson, David Sondral. FRENCH HORNS- Janice Irwin, Jo Ann Thoreson, Patty Brokke, Marlys Spokley, Elizabeth Holland. TENOR SAX.- Helen Folstad, Ray Thune, Sandra Severson, Virginia Ranten. ALTO SAX.- Ronald Brink, Jerome Landgaard, Kay Vang, Nancy Evenson, Jovonne Wollertson, Betty Larson. BARITONES- Juneal Wollertson, Joan Abrams, Bruce Brokke, Vernon Roning. BARITONE SAX.- Aldine Gray. TROMBONES- David Monson, Barbara Morken, Janice Tonder, Arnold Moen, Roger Estenson, Judy Larson, Cameron Gray. BASSES- Oris Semeling, Robert Morken, Vern Wegge. PERCUSSION- Janice Wegge, Darlene Gordon, Sharon Nelson.

Band Officers

Director- K.O. Langbell; President- Arlene Eidsmoe, Vice President- Bruce Amundson; Secretary-Treasurer- Fern Letnes; Band Manager- Noel Estenson; Assistant Manager- Ray Thune Librarians- Lola Rognlie, Janice Wegge.



Future Homemakers of America

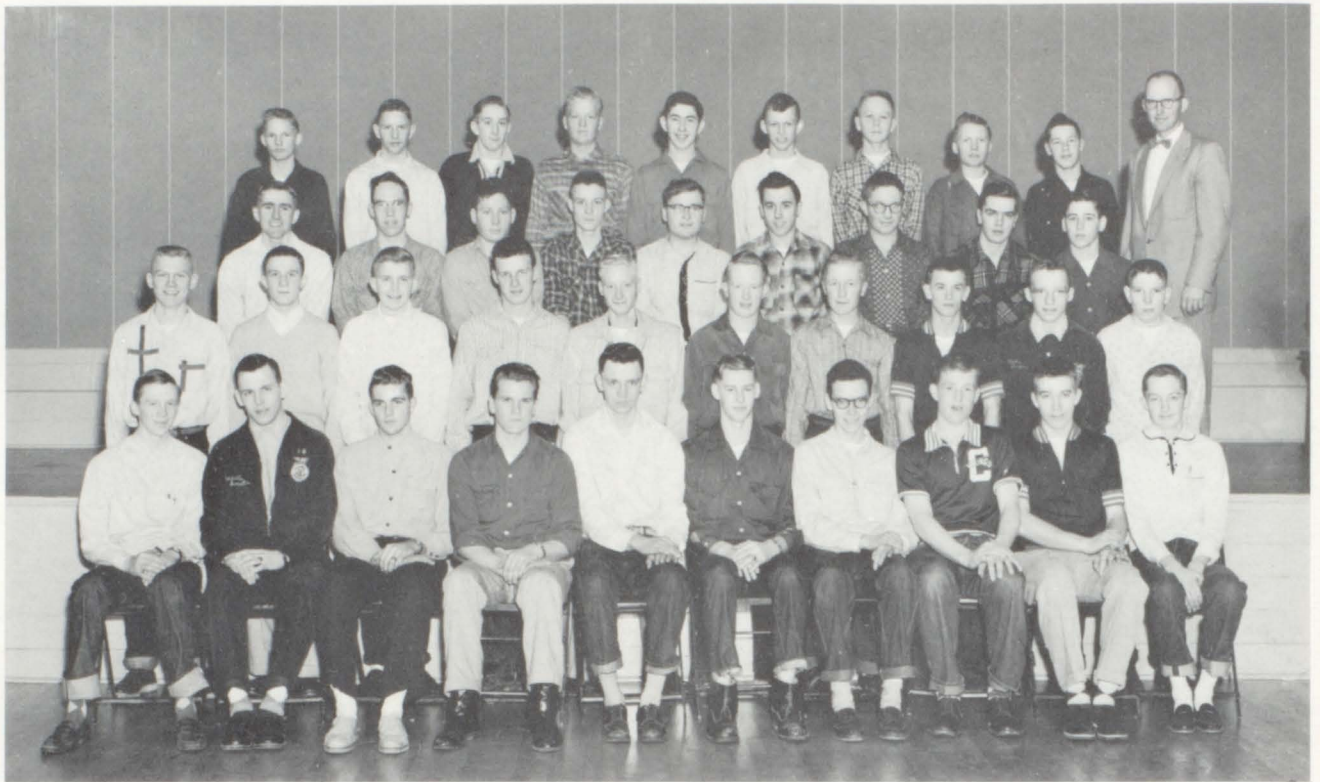
FIRST ROW, left to right: Ardys Reel, Sandra Wollertson, Patty Brokke, Judy Jacobson, Marlys Bjorge, Jovonne Wollertson, Jo Ann Thoreson, Sonja Engen, Marlys Spokley, Barbara Morken, Phyllis Odegard. 2ND: Dianne Tonder, Marjorie Aukland, Janice Irwin, Audrey Bjorge, Carol Braaten, Aldine Gray, Helen Folstad, Sharon Nelson, Juneal Wollertson, Olga Aure, Arlene Eidsmoe, Mildred Grove. 3RD: Virginia Ranten, Beverly Quirk, Marlene Larson, Nancy Quirk, Sharon Evenson, Maxine Vetter, Luverne Eidsmoe, Jeanine Rogenes, Elizabeth Holland, Marjorie Hanson, Darlene Hettervig, Eileen Hartman, Marlyn Anderson. 4TH: Janice Tonder, Sonja Johnson, Ella Bjornstad, Borghild Sandvik, Lola Rognlie, Joan Grove, Janice Wegge, Darlene Gordon, Fern Letnes, Annette Thune, Geraldine Peterson, Bonnie Gilbertson, Mrs. Deitz.

The Climax Chapter of the Future Homemakers of America has a membership of forty-eight under the guidance of Mrs. Deitz, our advisor.

During the past year we have had various activities such as: serving for numerous banquets and planning our Mother and Daughter Banquet at which we awarded degrees for achievement in F. H. A., three of our girls-Sandra Wollertson, Annette Thune, and Fern Letnes-were fortunate to receive their State Degrees at the State Convention in Minneapolis. We presented our style show which we modeled our clothes we had made in our Home Economics Classes.

We were very fortunate in having the State Secretary Sandra Wollertson, as a member of our Chapter.





Future Farmers of America

The Climax Chapter of the Future Farmers of America, under the leadership of our advisor, George Nornes, made it "five in fifty-five" with the winning of the Potato Judging Contest at the Red River Valley Winter Shows. It became five straight years we have had at least one championship team.

Our chapter last year raised Selkirk Wheat and are again this year in the business of Wheat Farming. Members of our Chapter won Championships at the Red River Valley Winter Shows and the District F.F.A. Fair in Thief River Falls with their livestock.

At the State F.F.A. Convention held May 9, 10, and 11, Noel Estenson and Pernell Swenson received the coveted State Farmer Degree. Noel was also elected State Vice President. He became the fourth state officer from Climax in the past five years. Four members of our chapter will attend the National F.F.A. Convention in October of 55. They are Pernell Swenson, Russell Sylvester, Noel Estenson, and Bruce Amundson. These trips have been awarded the boys for their outstanding work in the Future Farmers of America Organization.



F. F. A. Officers

President	Noel Estenson
Vice President	Bruce Amundson
Secretary	Robert Morken
Treasurer	Sam Nesvig
Reporter	Ralph Peterson
Sentinel	Leslie Nesvig
Advisor	George Nornes

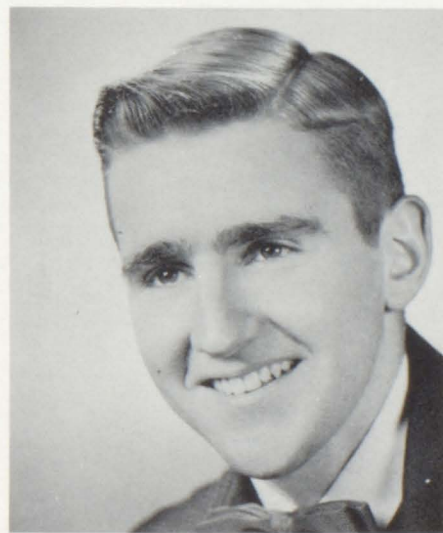


Potato Judging Team

In the potato judging contest held at the Red River Valley Winter Shows the Climax High School team won first place with 330 points out of a possible 390. The team was coached by George Nornes. Pictured above from left to right, are: Front row - Noel Estenson, Bruce Amundson; Back row - George Nornes, Coach, and Ralph Peterson. They were awarded a bronze plaque by the Red River Valley Development Association.



State Farmers



PERNELL SWENSON has carried on an outstanding supervised farming program, as well as serving as officer of the Climax Chapter for two years, being president his Junior year. He also served as District Sentinel his junior year. Pernell has been on Dairy and General Livestock Judging Teams in District and State Contests and has always been near the top.

NOEL ESTENSON, elected State Vice President and District President has held the office of treasurer in 54 and president in 55 of the Climax Chapter. Noel was high individual Soils Judge at the Red River Valley Winter Shows. He was fifth high individual in the State Contest in 53 and second high in 54, the year the Soils Team placed second in the State Contest. In 1955 Noel was high individual judge in the Red River Valley Potato judging contest.



F.H.A.-F.F.A. Pancake Supper



Girls Athletic Association

FIRST ROW, left to right: Dianne Tonder, Ardys Reel, Kay Vang, Patty Brokke, Lola Rognlie, Judy Jacobson, Phyllis Odegard, Arlene Eidsmoe, Lucella Swenson, Shirley Nelson, Shirley Schroeder. 2ND: Marlys Bjorge, Marjorie Aukland, Janice Irwin, Audrey Bjorge, Carol Braaten, Aldine Gray, Helen Folstad, Sharon Nelson, Juneal Wollertson, Jovonne Wollertson, Olga Sandvik, Mildred Grove, Mrs. Olsen. 3RD: Virginia Ranten, Beverly Quirk, Marlene Larson, Nancy Quirk, Sharon Evenson, Maxine Vetter, Luverne Eidsmoe, Jeanine Rogenes, Elizabeth Holland, Marjorie Hanson, Darlene Hettervig, Eileen Hartman. 4TH: Sonja Engen, Barbara Morken, Margaret Grosfield, Shirley Dybing, Sonja Johnson, Ella Bjornstad, Marlys Spokley, Joan Grove, Bonnie Gilbertson, Jo Ann Thoreson, Fern Letnes, Janice Tonder, Annette Thune, Olga Aure.

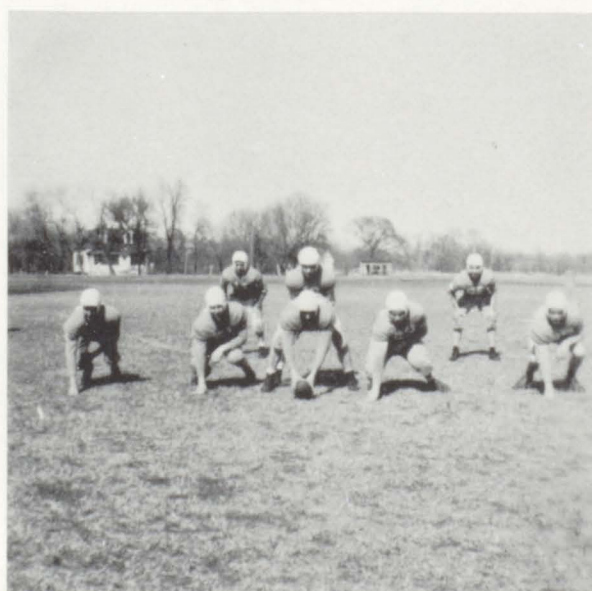
Sports





Football Team

1ST. ROW, left to right: Vernon Roningen, David Aukland, Brent Amundson, Bruce Brokke, Donald Johnson, Gene Christopherson. 2ND. ROW: Noel Estenson, Sam Nesvig, Wellington Nelson, Elroy Folstad, David Monson, Robert Morken, Russel Sylvester. 3RD. ROW: Coach: Art Vraa, Ronald McCauley, Bruce Amundson, Leslie Nesvig, Ronald Brink, Ralph Peterson, George Taus, Student Manager: Curtis Wegge.







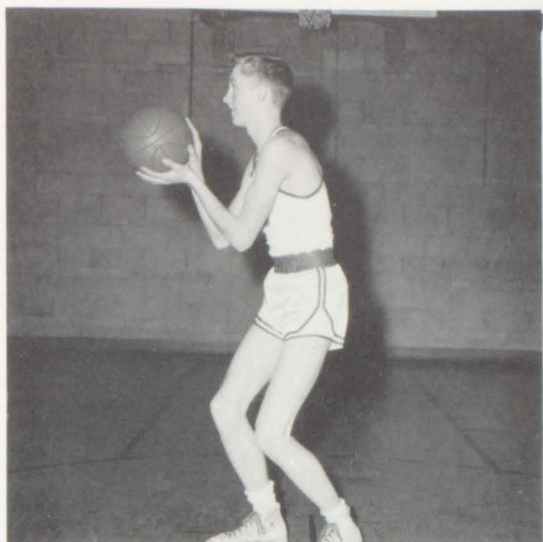
"A" Team

From left to right: Coach, Mr. Mjolsness; Bruce Amundson; Elroy Folstad; Noel Estenson; David Monson; Lanny Rogenes; Vern Wegge; Gene Christopherson; Brent Amundson; Ray Thune; George Taus; Ralph Peterson; James Cayler, Student Mgr.



"A" Team Cheerleaders

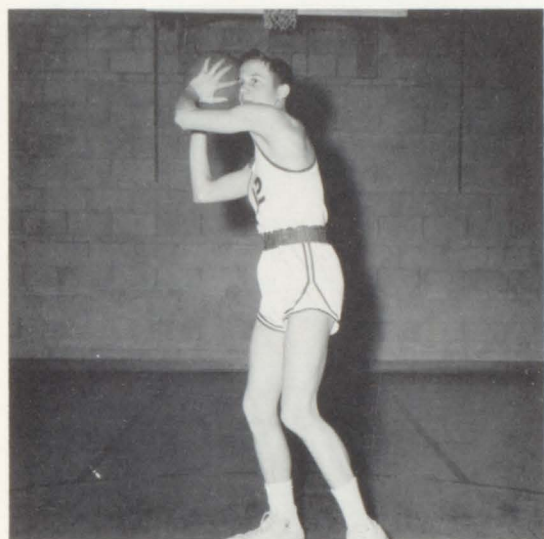
Left to right; Fern Letnes; Sandra Wollertson; Janice Tonder; Sharon Even-son; Elizabeth Holland; Lola Rognlie.



Gene Christopherson



David Monson



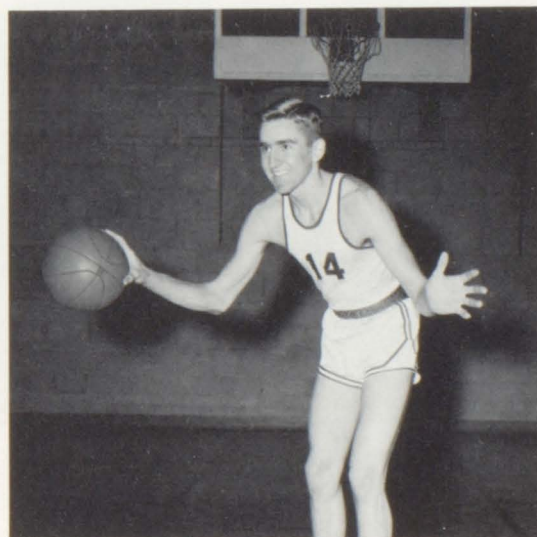
Bruce Amundson



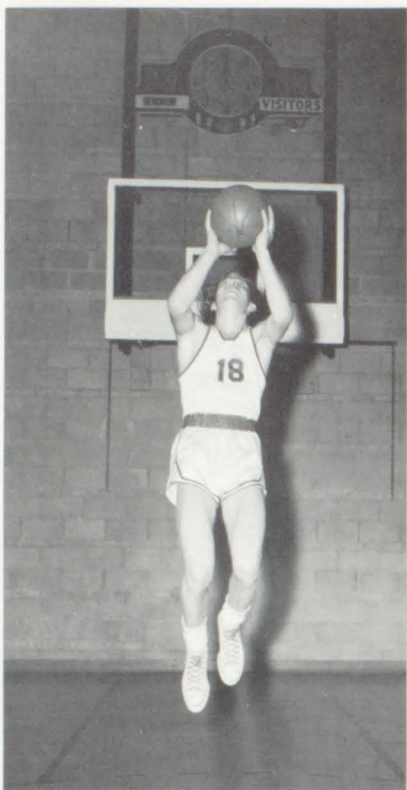
Elroy Folstad



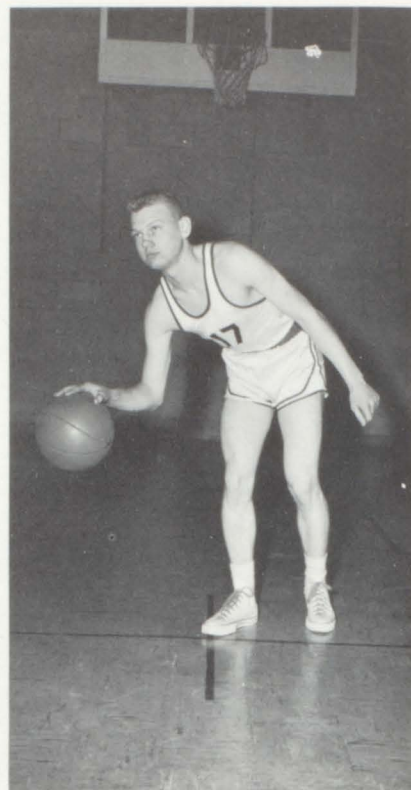
Lanny Rogenes



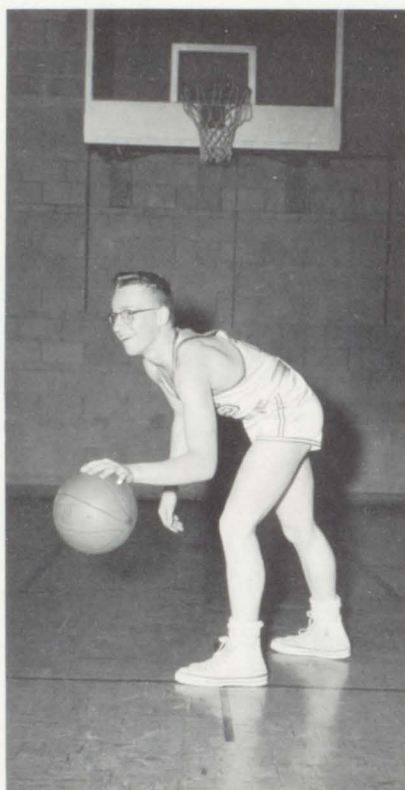
Noel Estenson



VERN WEGGE



RAY THUNE



RALPH PETERSON



BRENT AMUNDSON



GEORGE TAUS



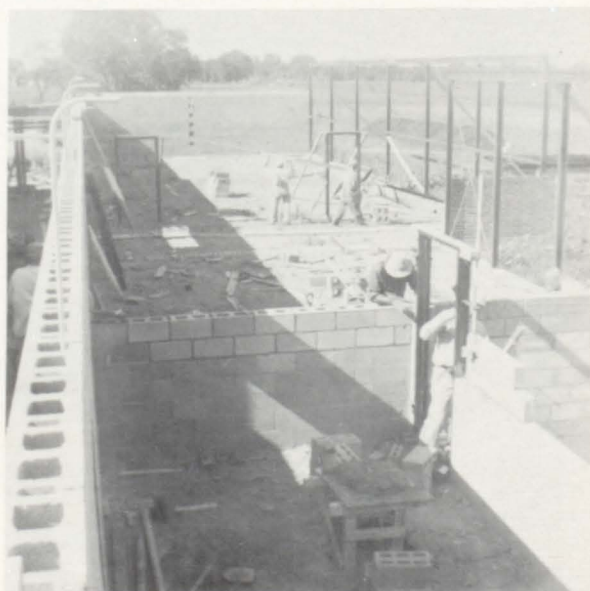
Basketball "B" Team

Left to right: Coach-Art Vraa, Ronald McCauley, Merlyn Malme, Gary Monson, David Aukland, Roger Estenson, Robert Morken, Bruce Brokke, James Peterson, Curtis Wegge, Leslie Nesvig.



"B" Team Cheerleaders

Left to right: Phyllis Odegard, Dianne Tonder, Patty Brokke.





KNEELING, left to right: Gary Monson; Bruce Amundson; Ronald Brink; Ralph Peterson; George Taus; Ray Thune; Jerome Landgaard. STANDING: Student Mgr. James Cayler; Brent Amundson; Russell Sylvester; David Monson; Lanny Rogenes; Vern Wegge; Elroy Folstad; Coach, Dan Mjolsness.





Senior Play

"Meet Corliss Archer"

Corliss Archer, a teen-aged girl. Sandra Wollertson
 Mr. Archer, her father. Gene Christopherson
 Mrs. Archer, her mother. Janice Irwin
 Louise, the maid. Luella Moen
 Mildred, Corliss's best friend. Arlene Eidsmoe
 Dexter Franklin, the boy next door. Ronald Brink
 Mr. Franklin, his father. Elroy Folstad
 Mrs. Franklin, his mother. Ella Bjornstad
 Cousin Agnes, on Mrs. Archer's side. . . . Marlene Koppang
 The Dr. from the insurance co. Sam Nesvig
 A nurse from the hospital. Jo Ann Thoreson
 Betty, another girl friend. Borghild Sandvik

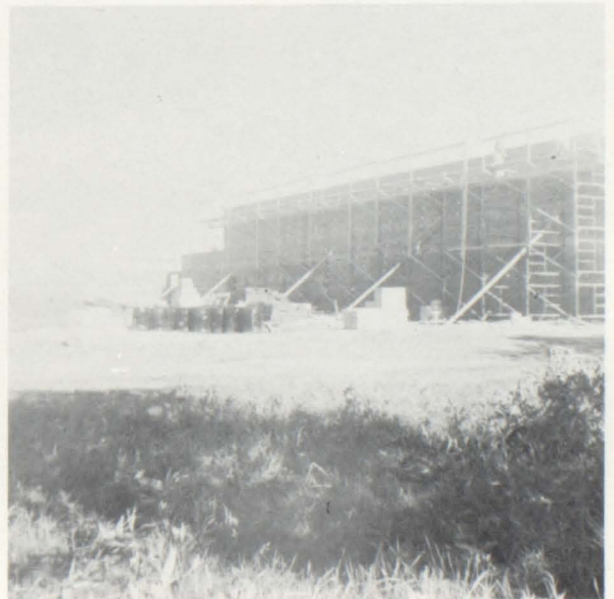
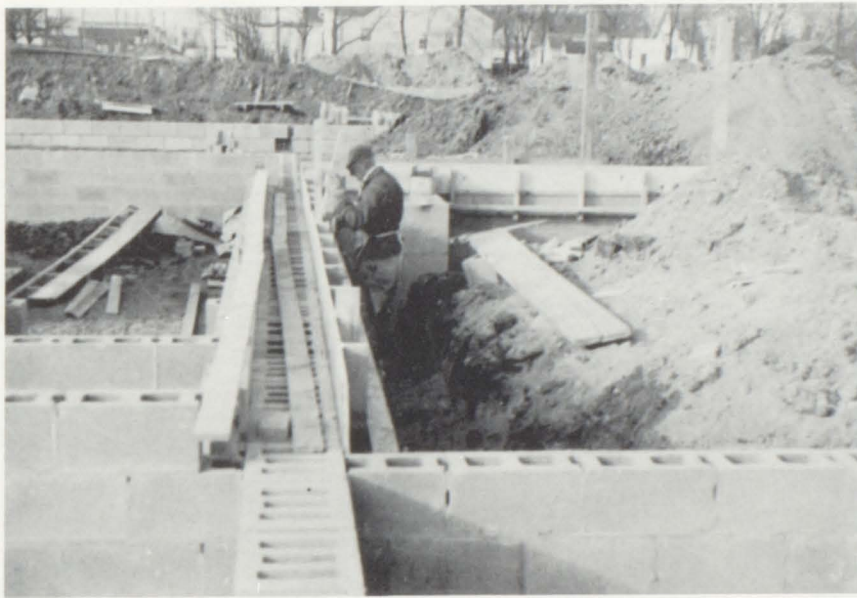
Production Staff

Director. Mrs. Barr
 Prompter. Marjorie Aukland
 Business Manager. Tom Boyer
 Property Managers. James Hagen
 Carl Ostgaard, Robert Wegge
 Usheretts. Lucella Swenson,
 Shirley Schroeder, Shirley Nelson, Olga Aure, Janis and Joan
 Abrams.













STANDING, left to right: Olga Aure, Tom Boyer, Jerome Landgaard, Russel Sylvester, Gene Christopherson, Advisor; George Nomes SEATED: Arlene Eidsmoe, Elroy Folstad, Sandra Wollertson, Ronald Brink.

Annual Staff

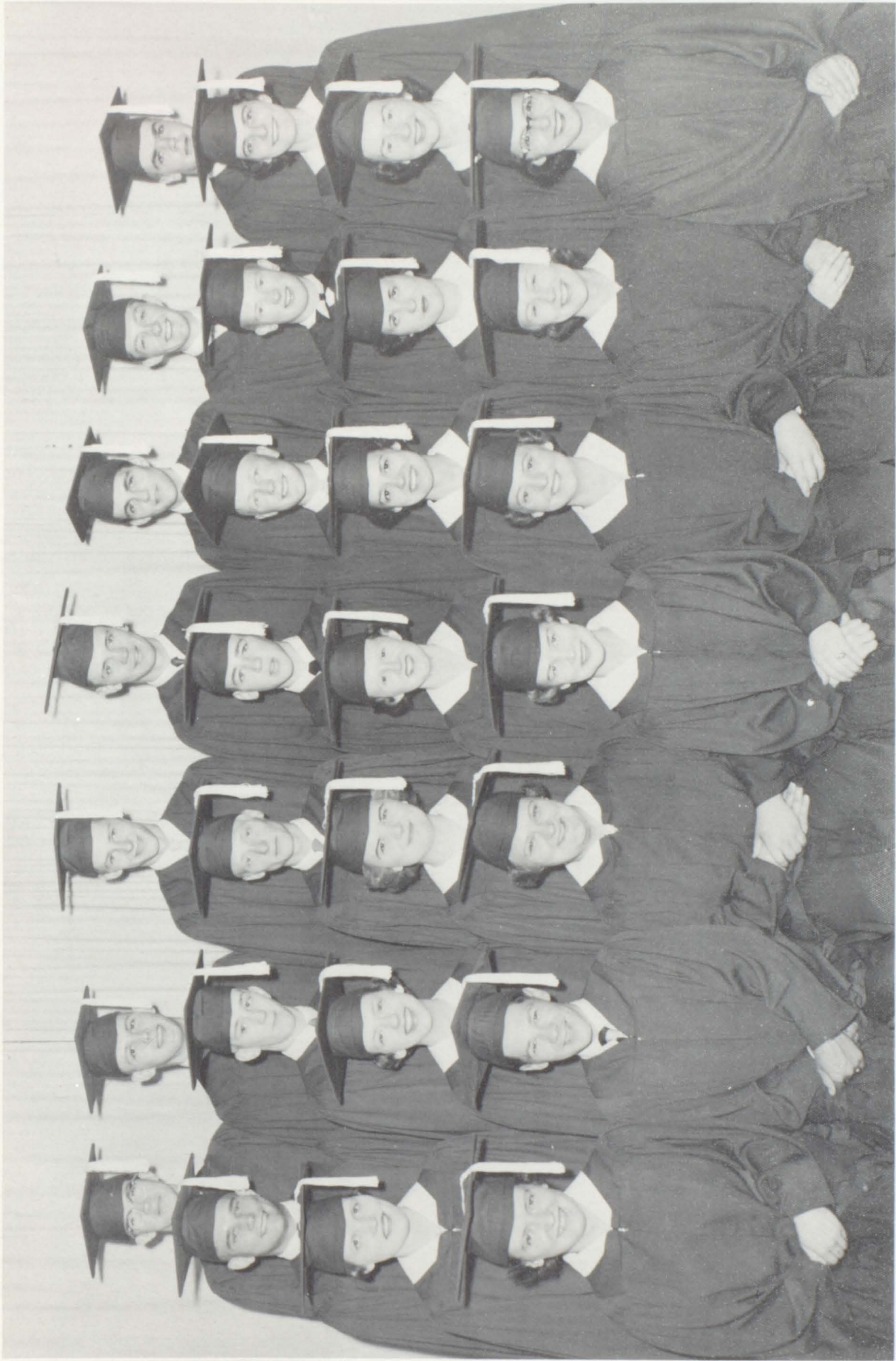
Elroy Folstad.	Editor
Arlene Eidsmoe.	Assoc. Editor
Gene Christopherson.	Feature Editor
Russel Sylvester.	Sports Editor
Olga Aure.	Artistry
Ronald Brink.	Business Manager
Jerome Landgaard.	Advertising
Tom Boyer.	Advertising
Sandra Wollertson.	Photography
Mr. Nornes.	Advisor

The VIKING Staff wants to thank everybody that cooperated in making our annual a success. We hope that you will look at it in the years to come and remember the good days we had at Climax High School.



Teacher's
Younger
Years





Class of 1955

Advertising

\$10.00 CONTRIBUTIONS

Farmers Union Oil Co. - Brekken's Men's Store - The Northwestern Clinic - Crookston Clinic - Shelly State Bank - Stenshoel Funeral Home - Shelly Farmers Coop. Cry. Assn. - Orville Brokke: Standard Oil Agent - Cash Mercantile Co. Erik Landgaard, Prop.

\$5.00 CONTRIBUTIONS

Maves Optical Co. - Climax Grain Co-op Assn. - Johnson Jewelry - Munn's Jewelry - Crookston Recap & Supply Co. - Houske's Funeral Home - Eidsmoe's Cafe - Shelly Meat Market - Ernest Wollertson: Fairway Store - Climax Implement Co. - Ireland's Lumber Yards - Gilbert's Place - Crop Hail & Farm Wind Storm Insurance: H. G. Boyer.

\$3.00 CONTRIBUTIONS

Zitzer's Flowers - C. O. D. Clothing Store - Langbell Music Store.

\$2.00 CONTRIBUTIONS

Boe's Hatchery - Malme Hwd. & Imp. Co. - Roy Dybing: L. B. Hartz Agency.

\$1.00 CONTRIBUTIONS

Ambueles Market - Wollertson Store - Peterson-Biddick Co. - Victoria Elevator Co.



