

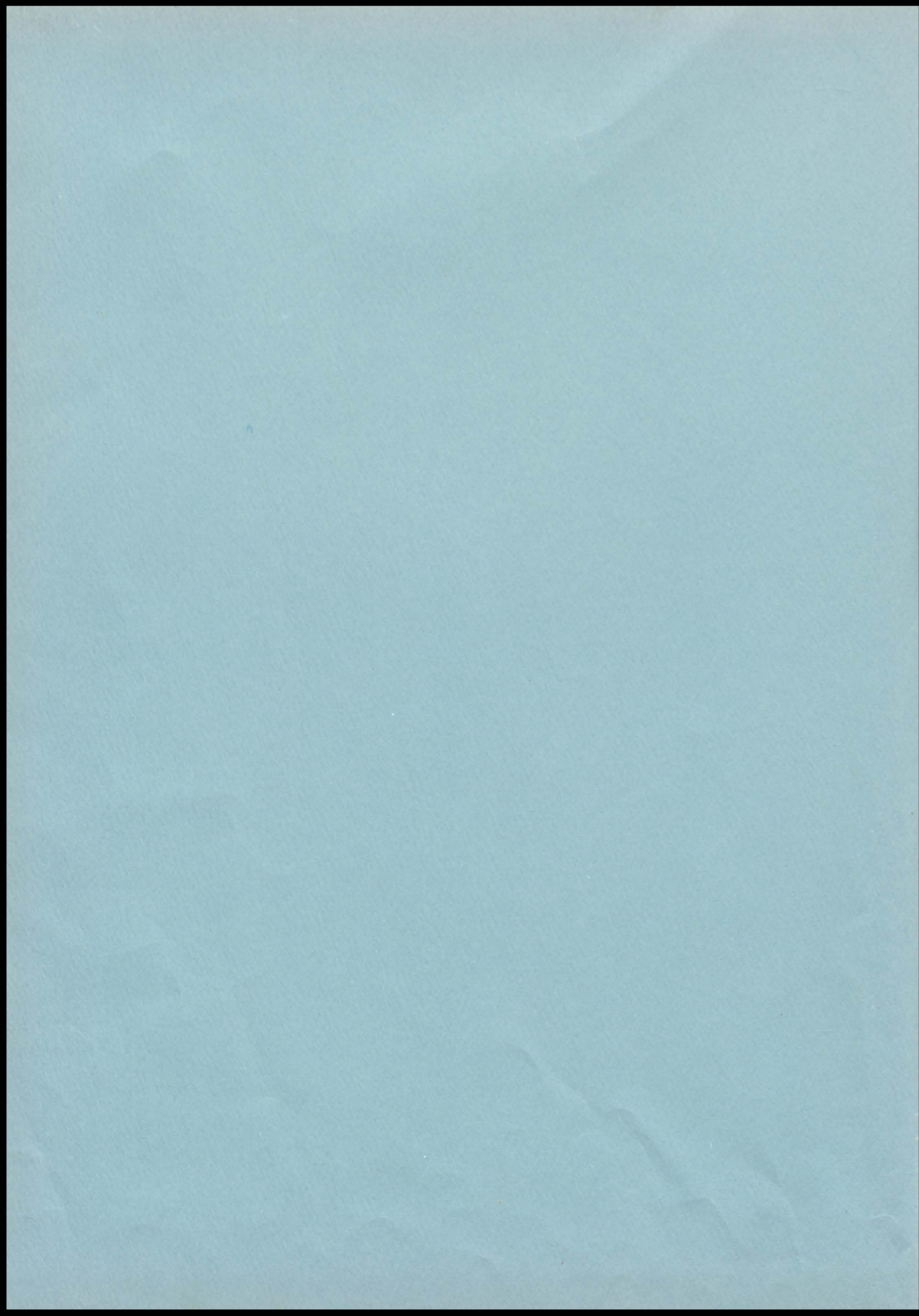
THE
1953



THE VIKING









The 1953 Viking

presented by the

**Senior Class
and
Viking Staff**

of

**Climax High School
Climax, Minnesota**

DEDICATION

To our parents, who have so patiently and faithfully guided our young lives to make us better citizens of tomorrow, we respectfully dedicate the 1953 Viking.



Faculty



SUPERINTENDENT OLUF T. OLSEN
Luther College
Social Studies



PRINCIPAL DONOVAN J. BAKKE
North Dakota Agricultural College
Geometry, Driver Training, Music

BOARD OF EDUCATION

Left to Right - Louis Letnes, Knute Boe, Orville Vang, O. T. Olsen, Oscar Romo, Arnold Amundson, George Keller.

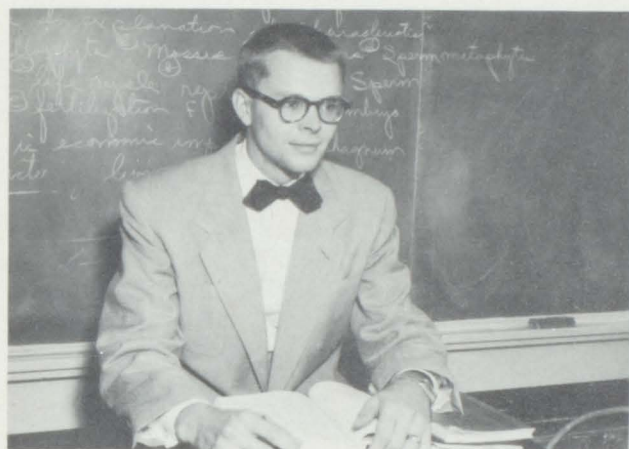




MRS. JENNIE ABRAHAMSON
University of Minnesota
Home Economics



MRS. DEAN BARR
Moorhead State Teachers College,
English, Speech, Typing



DEAN BARR
North Dakota Agricultural College,
Mathematics, Science, Physics



MISS ELLA CONDIFF
Moorhead State Teachers College,
Grades 3 & 4



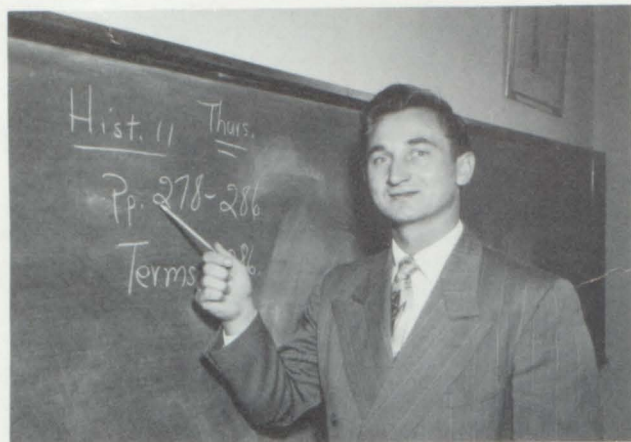
ROBERT DALEN
St. Olaf,
Civics, History, Business, Physical Education,
Assistant Coach



MRS. CHARLOTTE KUNKEL
University of North Dakota
English, Library



MISS KATHRYN LORVIG
Concordia College,
Grades 1 & 2



DANIEL MJOLSNES
Moorhead State Teachers College,
History, Science, Biology, Coach



GEORGE NORNES
North Dakota Agricultural College
Agriculture



MRS. OLUF OLSEN
St. Olaf,
Physical Education



MRS. LILA WALGREN
Moorhead State Teachers College,
Grades 3 & 4



MRS. HARRY MILLER
School Nurse



SENIORS



Cecil Malme - President, Joan Hanson - Secretary, Rodger Sondrol - Treasurer, Gloria Eia - Reporter, Wendlen Serverson - Vice President.

During the past four years Climax High School has had the privilege of having the "Class of '53" to brighten it's halls.

In 1949 forty freshmen entered Climax High. Our class has now dwindled to a mere twenty-eight. Even though we are a small class it hasn't lessened our accomplishments.

The seniors have contributed much of their talents to the various activities of the school. We have proven our talents with seventeen students in chorus, seventeen in glee clubs, and eight in band. We have taken part in one-act plays, junior and senior class plays, and declamation.

Our junior year was highlighted with the annual magazine sales drive in which we established the highest number of sales in the schools history. The profits of this sales drive enabled us to sponsor one of the most elaborate junior-senior banquets ever given. A Norwegian theme was used for this banquet and it was held on May 17, Norwegian Independence Day.

Our senior year has been one of enthusiasm and accomplishment on the part of each student. Our excellent play and the decorative banquet given in our honor by the juniors, mark the end of the year's social activities.



DENNIS AKER

"I enjoy work-I could watch it for hours." F. F. A.-1,2,3,4; Basketball-1,2,3,4; One-act Play-1,2,3; "A Case of Springtime"-3.



RUSSELL BERG

"Boogie Woogie Kid." F. F. A. - 1,2,3,4; Reporter -4; Band-1,2,3,4; Pep Band-4; Chorus-3,4; Glee Club-4.



JOAN BREDLIE

"When she talks, it isn't a conversation--It's a filibuster." F. H. A.-1,2,3,4; Historian-2; Song Leader-3,4; G. A. A. -2,3,4; F. T. A.-3; Chorus -1,2,3,4; Band-1,2,3,4; Pep Band-4; Glee Club-1,2,3,4; Vice Pres.-3; Declamation-1,2; One-act Play-2,3,4; "A Case of Springtime."-3.



ROGER COOPER

"I'm dame dreaming." F. F. A.-1,2,3,4; Camera Club-4.



GLORIA EIA

"Laugh and go mad." F. H. A.-1,2,3,4; Sec.-2; Pres.-4; State Comm.-4; G. A. A.-2,3,4; Sec.-3; F. T. A.-3,4; Sec.-3; Camera Club-4; Vice Pres.-4; Glee Club-1,2,3,4; Chorus-2,3,4; Band-2,3,4; Pres.-4; Pep Band-4; Class Sec.-2; Reporter-4; Student Librarian-3,4; Declamation-2,3,4; One Act Play-4; "A Case of Springtime"-3; Annual Staff-4.



ELAINE EICHHORST

"Wind her up and away she goes." F. H. A.-1,2,3,4; G. A. A.-2,3,4; F. T. A.-3,4; Chorus-2,3,4; Glee Club-1,2,3,4; Band-1,2,3,4; Pep Band-4; Chorus Gown Comm.-4; Declamation-2,4; "A Case of Springtime"-3.



YVONNE EINESS

"No sleep till dawn when youth and pleasure meet." F. H. A.-1,2,3,4; Sec.-3; G. A. A.-1,2,3,4; Vice Pres.-3; Chorus-1,2,3,4; Librarian-3; Glee Club 1,2,3,4; Librarian-3,4; Camera Club-4; Sec.-4; Declamation-1,2; Student Librarian-4; Class Sec.-3; Cheerleader-2,3,4; "A Case of Springtime"-3.



DUWAYNE ENGELSTAD

"A guy with plenty of face value." F. F. A.-1,2,3,4; Production staff-2,3.



WAYNE ESTENSON

"My only books are women's looks and I sure do love to study." F.F.A.-1,2,3,4; Judging Team-2,3,4; Class Sec. Treas.-1; Glee Club-1; Chorus-1; One Act Play-2; Annual Staff-4.



NANCY FOLSTAD

"Quiet on the outside, but oh, those evil thoughts." F.H.A.-1,2,3,4; reporter-4; G.A.A.-1,2,3,4; Sec.-2; F.T.A.-3,4; Treas.-4; Camera Club-4; Chorus-1,2,3,4; Glee Club-1,2,3,4; Vice Pres.-4; Band-3,4; Sec.-Treas.-4; Pep Band-4.



YVONNE GROVE

"Charles should know her, she's such a little Dickens." F.H.A.-1,2,3,4; Treas.-4; G.A.A.-1,2,3,4; Chorus-1,2,3,4; Pres.-4; Glee Club-1,2,3,4; Band-1; 2,3,4; Pep Band-4; One Act Play-2; Declamation-2,4; "A Case Of Springtime"-3.



JOAN HANSON

"I'm learning a lot but school interferes." F.H.A.-1,2,4; G.A.A.-1,2,3,4; F.T.A.-3,4; Vice Pres.-4; Chorus-1,2,3,4; Girls Glee Club-1,2,3,4; Sec.-Treas.-3; Student Librarian-4; Declamation-4; Class Sec.-4.



AUDREY LANGHUS

"She's little, she's wise, she's a terror for her size." F.H.A.-1,2,4; F.T.A.-4; G.A.A.-1,2,4; Camera Club-4; Chorus-1,2,4; Glee Club-1,2,4; Sec.-4; Band-2; Carnival Queen.



CECIL MALME

"Young man with a horn." F.F.A.-1,2,3,4; Judging teams-2,3,4; Vice Pres.-2; Sec.-3; Vice Pres.-4; Dist. Pres.; State Vice Pres.-4; Camera Club-4; Chorus-1,2,3,4; Glee Club-1,2,3,4; Band-1,3,4; Librarian-3; Manager-3,4; Pep Band-4; Baseball-3,4; One Act play-3,4; Declamation-3,4; Class Pres.-4; "A Case of Springtime"-3; Annual Staff-4.



VERLYS MALME

"Her mind never knows what her mouth will say next." F.H.A.-1,2,3,4; Vice Pres.-3; State Comm.-4; G.A.A.-1,2,3,4; F.T.A.-3,4; Chorus-1,2,3,4; Glee Club-1,2,3,4; Cheerleader-3,4; One Act Play-1,2,3; Declamation-3,4; Class Vice Pres.-2; Class Pres.-3; A Case of Springtime-3.



EARL MERKINS

"He's the type of boy who hits the nail squarely on the thumb." F.F.A.-1,2,3,4; Judging team-2,3,4.



SHIRLEY NYGAARD

"Don't direct her; she knows where she is going." F. H. A.-1,2,3,4; Band-3; Chorus-1,2,3,4; Glee Club-2,3,4; Student librarian-4; Declamation-4.

HOMER OLSEN

"Wheaties did it!" F.F.A.-1; C Club-1,2,3,4; Camera Club 4; Pres.-4; Chorus-1,2,3,4; Librarian-4; Band-1,2,3,4; Sec.-Treas.-3; Librarian 4; Glee Club-1,2,3,4; Basketball-1,2,3,4; Baseball-4; Class Pres.-1; Declamation-4; "A case of Springtime"-3; Annual staff-4.

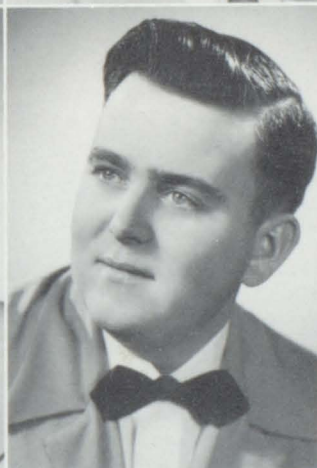


MARCELLA OLSON

"Her heart is like a moon, there's a man in it." F.H. A.-1; Camera Club-4; Chorus-3,4; Glee Club-1,2,3,4; Band-3,4; Pep Band-4; "A case of Springtime"-3; Annual Staff-4.

ARLEN PAULSRUD

"The girls love my curls and I love the girls." F.F. A.-1,2,3,4; Treas.-3; Pres.-4; Judging team-2,3,4; Chorus-1,2,3,4; Glee Club-1,2,3,4; Class Treas.-2; Basketball-1,2,3,4; Baseball-3,4; One act Play-2; "A case of Springtime"-3; Annual-4.



MORRIS RONNINGEN

"Life is one long process of getting tired." F. F. A.-1,2,3,4; Judging team-3,4; Basketball-1.

WENDLEN SEVERSON

"Reading maketh a full man." F. F. A.-1,2,3,4; Reporter-3; Class Vice Pres.-4; "A Case of Springtime."-3.



MAYNARD SONDRÖL

"Answers don't bother me, it's the questions." F. F. A.-1,2,3,4.

RODGER SONDRÖL

"He works his head to the bone." F.F. A.-1,2,3,4; Treas.-4; Judging team-2,3,4; Camera Club-4; Clean-up man-4; Class Treas.-4; Basketball-1,2,3; "A Case of Springtime"-3; Annual staff-4.



ARVID STORTROEN

"One of the most miss-informed boys in school." F. F. A.-1,2,3,4; Vice Pres.-3; Sentinel-2; Judging team-1,2,3,4; Basketball-1,2; Manager-4.

CAROL SVENDSON

"In this world she'll be a flare, just like the flash of red hair." F. T. A.-3,4; G. A. A.-1,2,3,4; Pres.-4; F. H. A.-1,2,3,4; Historian-4; Chorus-1,2,3,4; Glee Club-1,2,3,4; Sec.-4; Camera Club-4; Class Treas.-3; Cheerleader-3,4; Declamation-4; "A Case of Springtime."-3; Annual staff-4.



MARLYS TONDER

"Weather prediction-Windy!" F.H.A.-1,2,3,4; G. A. A.-1,2,3,4; Sec.-1,4; F. T. A.-3,4; Sec.-4; Camera Club-4; Class V. Pres.-3; Chorus-1,2,3,4; Librarian-4; Glee Club-1,2,3,4; Librarian-4; Student Librarian-4; Declamation-4; "A Case of Springtime."-3.

GENE TRONNES

"Einstein with a crew cut." F. F. A.-1,2,3,4; Judging team-2,3,4; Basketball-1,2; Baseball-3,4.

Margo

Danny



JUNIORS

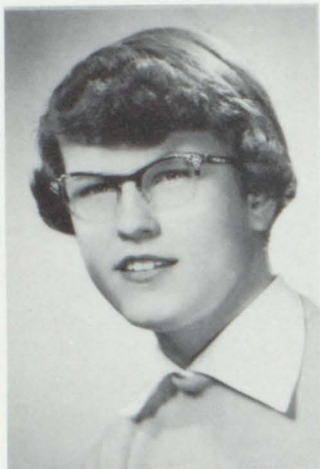


Jeanette Boucher - President, Gail Aanenson - Secretary, Darlene Letnes - Treasurer, Carol Jean Grove - Vice President.

This remarkable class of twenty girls and eight boys has developed in three years from frightened, blushing freshmen to robust, unashamed, near successes.

We have been represented in all school activities -- band, chorus, glee club, dramatics, and sports. One of our biggest accomplishments was our class play, "Let Me Grow Up", presented last December. The annual magazine drive was sponsored by the junior class last fall, which increased our treasury considerably.

Perhaps our greatest accomplishment this year was the junior-senior banquet which was held in May.

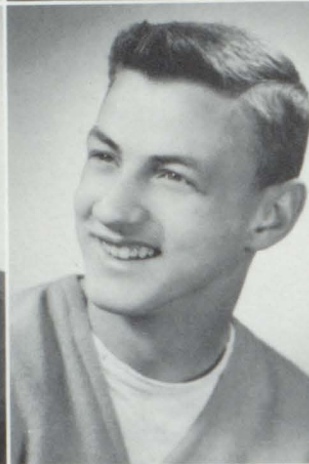


GAIL AANENSON

"She talks with her elbows." F. H. A.-1, 2, 3; Vice Pres.-3; G. A. A.-1, 2, 3; F. T. A.-3; Pres.-3; Camera Club-3; Glee Club-1, 2, 3; Librarian-3; Student Librarian-3; Band-2, 3; Declamation-3; Class Sec.-3.

LYLE BERG

"Pursues his studies but never overtakes them." F. A.-1, 2, 3.



JEANETTE BOUCHER

"The hardest thing to give is in." F. H. A.-1, 2, 3; Sec.-3; F. T. A.-3; Reporter-3; G. A. A.-1, 2, 3; Chorus 2, 3; Sec.-3; Glee Club-1, 2, 3; Band-3; Student Librarian-3; Declamation-3; Class Pres.-3; "Let Me Grow Up"-3.

JOHN BRADY

"In spite of all his faults we like him still--the stiller the better." F. F. A.-1; Camera Club-3; Treas.-3; Chorus-1, 2, 3; Glee Club-1, 2, 3; Band-2, 3; Basketball-1, 2, 3; Baseball-2, 3; Declamation-3; Track-2; "Let Me Grow Up"-3; One Act Play-3.

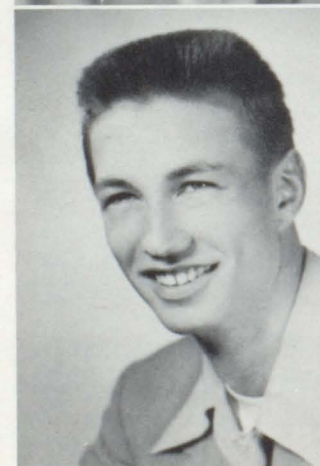


MARY JANE BROKKE

"Her occasional flashes of silence make her conversation perfectly delightful." F. H. A.-1, 2, 3; G. A. A.-1, 2, 3; Chorus-1, 2, 3; Glee Club-1, 2, 3; Librarian-1; Student Librarian-3; Band-1, 2, 3; Cheerleader-3; Declamation-2, 3; "Let Me Grow Up"-3.

RICHARD BROKKE

"He's not as harmless as he looks." F. F. A.-1, 2, 3; Sec.-3; Chorus-1, 2, 3; V. Pres.-3; Gown Committee-3; Glee Club-1, 3; Band-3.



BRUCE BURD

"All I want out of school is me." F. F. A.-1, 2, 3; Basketball-1, 2, 3; Track-2; Baseball-3.

SHIRLEY COAUETTE

"Here today gone for the rest of the week." F. H. A.-1, 2, 3; G. A. A.-1, 2, 3; F. T. A.-3; Chorus-2; Glee Club-1, 2; Camera Club-3; Declamation-1; Class V. Pres.-1.



AUDREY CHRISTOPHERSON

"School's all right but let's have fun." F. H. A.-1,2,3; F. T. A.-3; G. A. A.-1,2,3; Band-1,2,3; Glee Club-1,2,3; Student Librarian-3.

JOAN COOPER

"Blue are her eyes with a face to match." F. T. A.-3; F. H. A.-1,2,3; Student Librarian-3; G. A. A.-2,3; Treas.-2; Class Vice Pres.-2.



CHARLOTTE FOSS

"I think I think more than you think I think." F. H. A.-2,3.

ANITA GRAMSTAD

"Social circles under her eyes." F. H. A.-1,2,3; G. A. A.-1,2,3; Chorus-1,2,3; Librarian-1,3; Glee Club-1,2,3; Class Pres.-2.



WILLIAM GROSFIELD

"He's gone around with more girls than a revolving door." F. F. A.-1; Chorus-3; Glee Club-3; Band-3; Camera Club-3; Basketball-1,2; Baseball-2,3; Track-2,3; Class Pres.-1.

CAROL JEAN GROVE

"All that and she could wiggle her ears, too!" F. H. A.-1,2,3; Declamation-3; Chorus-1,2,3; Glee Club-1,2,3; Band-2,3; Pep Band-3; Class Vice Pres.-3.



ALAYNE HETTERVIG

"She likes to live the quiet life with the usual interruptions." F. H. A.-1,2,3; Glee Club-1,2,3.

DARLENE LETNES

"Takes life as it comes." F. H. A.-1,2,3; Glee Club-1,2,3; Class Treas.-3; Declamation-3.



CAROL MORKEN

"Men may come, and men may go, but I'll go on forever." F.H.A.-1,2,3; Historian-2; G.A.A.-1; Chorus-2,3; Glee Club-1,2,3; Pres.-3; Gown Committee-3; Band-2,3; Pep Band-3; Declamation-3; "Let Me Grow Up."-3.



WINIFRED NESVIG

"Just like a cork, always popping off." F. H. A.-1,2,3; State Pres.-3; G. A. A.-1,2,3; Chorus-1,2,3; Glee Club-1,2,3; "Let Me Grow Up."-3.



LYMAN NYGAARD

"The harder I try, the gooder to be, the worser I get." F. F. A.-1,2,3.



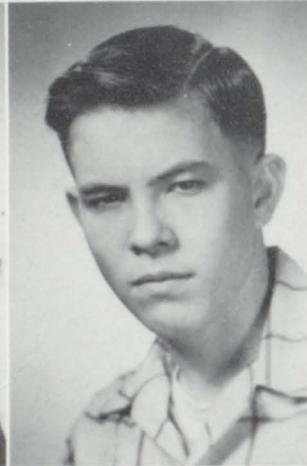
SHIRLEY OLSON

"I have heard the chimes at midnight." F. H. A.-1,2,3; G. A. A.-1,2,3; Glee Club-1,2,3; "Let Me Grow Up."-3.



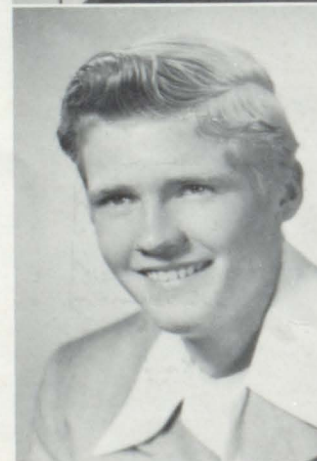
JOAN PETERSON

"When joy and duty clash, let duty go to smash." F. H. A.-1,2,3; Glee Club-1.



HAROLD ROWLEY

"Beware, I may do something sensational." Basketball-2,3; "Let Me Grow Up."



BERNARD SEMLING

"Sighted dame, dated same." F. F. A.-1,2,3; Camera Club-2.



GAIL STORTROEN

"Like the Woolworth building--endless stories." F. H. A.-1,2,3; G. A. A.-1,2,3; Glee Club-1,2,3; Librarian-1.



JANICE STROMMEN

"She speaks no evil word."

FHA 1,2,3; Chorus 1,2,3; Librarian 3; Glee Club 1, 2,3; "Let Me Grow Up." 3.

KAY WEGGE

"Some people get results. All I get are the consequences."

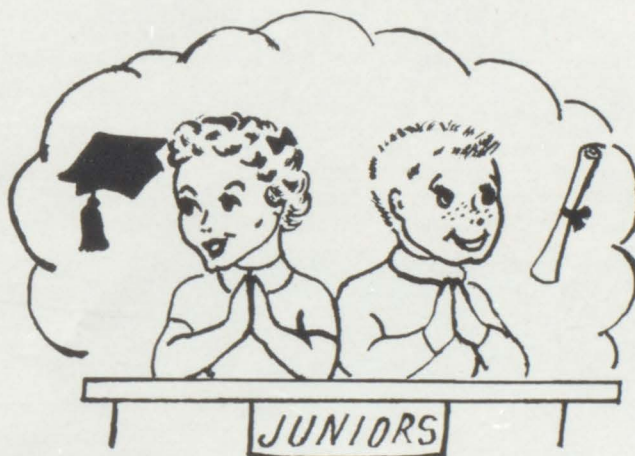
FHA 1,2,3; GAA 1,2,3; Chorus 1,2,3; Gown Comm. 3; Glee Club 1,2,3; Librarian 2,3; Band 1,2,3; Pep Band 3; Cheerleader 1; Class Treas. 1; "Let Me Grow Up." 3.



LOREN WEGGE

"Apparently not a bad boy, but appearances are deceiving."

FFA 1,2,3; Chorus 1,2,3; Glee Club 1,2,3; Band 3; Pep Band 3; Basketball 1,2.





SOPHOMORES

Top row, left to right: Janis Abrams, Joan Abrams, Marlyn Anderson, Marjorie Aukland, Olga Aure, Roger Bangen, Ella Bjornstad. Second row: Thomas Boyer, Arlen Braaten, Ronald Brink, Gene Christopherson, Arlene Eidsmoe, Janice Irwin, Elroy Folstad. Third row: James Hagen, Donald Johnson, Jerome Landgaard, Luella Moen, Shirley Nelson, Sam Nesvig, Carl Ostgaard. Fourth row: Maurice Rognes, Borghild Sandvik, Shirley Shroeder, Pernell Swenson, Lucella Swenson, Russell Sylvester, Joan Thoreson. Fifth row: Margaret Vettern, Sheldon Wegge, Robert Wegge, Sandra Wollertson. Not Pictured: Marlene Koppang, Arlen Iverson, Milton Cayler.

SOPHOMORE CLASS OFFICERS

Left - L to R - Gene Christopherson, Secretary, Roger Bangen, Treasurer, Jerome Landgaard, President, Sandra Wollertson, Vice-President.

During the two years the Sophomore class has been in existence, we have made quite a name for ourselves, being represented in all the school activities. Our outstanding contribution to the school this year was the freshmen initiation staged and performed by our class.

As the years progress toward graduation we are sure this talented class will make many more contributions.





FRESHMEN

Top row, left to right: Bruce Amundson, Kenneth Boe, Gene Brekke, James Cayler, Rodney Cooper, Noel Estenson. Second row: Darlene Gordon, Margaret Grosfield, Joan Grove, Jon Irwin, Laurence Jurchen, Joan Knutson. Third row: Fern Letnes, David Monson, Lola Rognlie, Joan Ruick, Oris Semeling, Rose Marie Smith. Fourth row: Leon Thoreson, Annette Thune, Janice Tonder, Carol Vang, Janice Wegge.

FRESHMEN CLASS OFFICERS

Left - L to R - Bruce Amundson, President, Noel Estenson, Vice-President, Leon Thoreson, Treasurer, Lola Ronglie, Secretary.

We entered high school in the fall of 1952, a little band of 25 green frosh. Last fall we were royally entertained by the Sophomore class at the initiation party.

It seems that the Freshmen class will surely make a name for itself during the next three years. Our class is well represented in band, chorus, glee club, basketball, and all other school activities.

Having passed the first hurdle of acclimating ourselves to high school life we feel that this class will soar to new heights and go down in school history as one of the most successful classes of its day.





Grade eight

Top row, left to right: Marlow Arneson, Patty Brokke, Shirley Dybing, Sonya Engen, Helen Folstad, Aldine Gray, Marjorie Hanson. Second row: Elizabeth Holland, Faith Johnson, Sonje Johnson, Allan Koppang, Marlene Larson, Merlyn Malme, Robert Morken. Third row: Sharen Nelson, Leslie Nesvig, Geraldine Peterson, James Peterson, Ralph Peterson, Nancy Quirk, Virginia Ranten. Fourth row: Richard Samuelson, Marlys Spokely, Ray Thune, Maxine Vettertn, Curtis Wegge, Jovonne Wollertson, Juneal Wollertson.

Grade seven

Top row: Brent Amundson, Carol Braaten, Bonnie Gilbertson, Vernon Grove, Eileen Hartman, Darlene Hettervig, Pernell Holland. Second row: Betty Larson, Lois Lavold, Jo Ann Letnes, Arnold Moen, Gary Monson, Barbara Morken, Beverly Quirk. Third row: James Rowley, Olga Sandvik, Ronald Semeling, Dianne Tonder, Dianne Tronnes, Kay Vang.





Grades five and six

Back row, left to right: Miss Condiff, Vernon Larson, David Gilbertson, Toni Davidson, Carol Christopherson, Dorothy Braaten, Ronald Nesvig, Kenneth Grove, Gail Grove, Christie Braaten. Middle row: Robert Braaten, Truman Johnson, Dallas Stortroen, Darrell Peterson, Barbara Hartman, Judy Larson, Nancy Evenson, Sandra Severson, Gail Sondrol, Mylan Moen. Front row: Brent Larson, Bruce Larson, Joyce Quirk, Norman Engen, Larry Hanson, John Lian, Eunice Grove, Yvonne Rowley, Marshall Cooper, Cameron Gray.

Grades three and four

First row, left to right: Jackie Erickson, Gale Christopherson, Donald Braaten, Dennis Thune, Karen Larson, Marsha Keller, Jean Ingwaldson, Allan Peterson. Second row: Bobbie Brokke, Kenneth Hartman, Patricia Johnson, Linda Davidson, Janice Moen, Marilyn Larson, Jerry Larson, Carol Johnson, Janice Thompson. Third row: Duane Evenson, Ronald Peterson, Emerald Kleven, Sherilyn Abrams, David Sondrol, Ronald Peterson, Stanford Erickson.





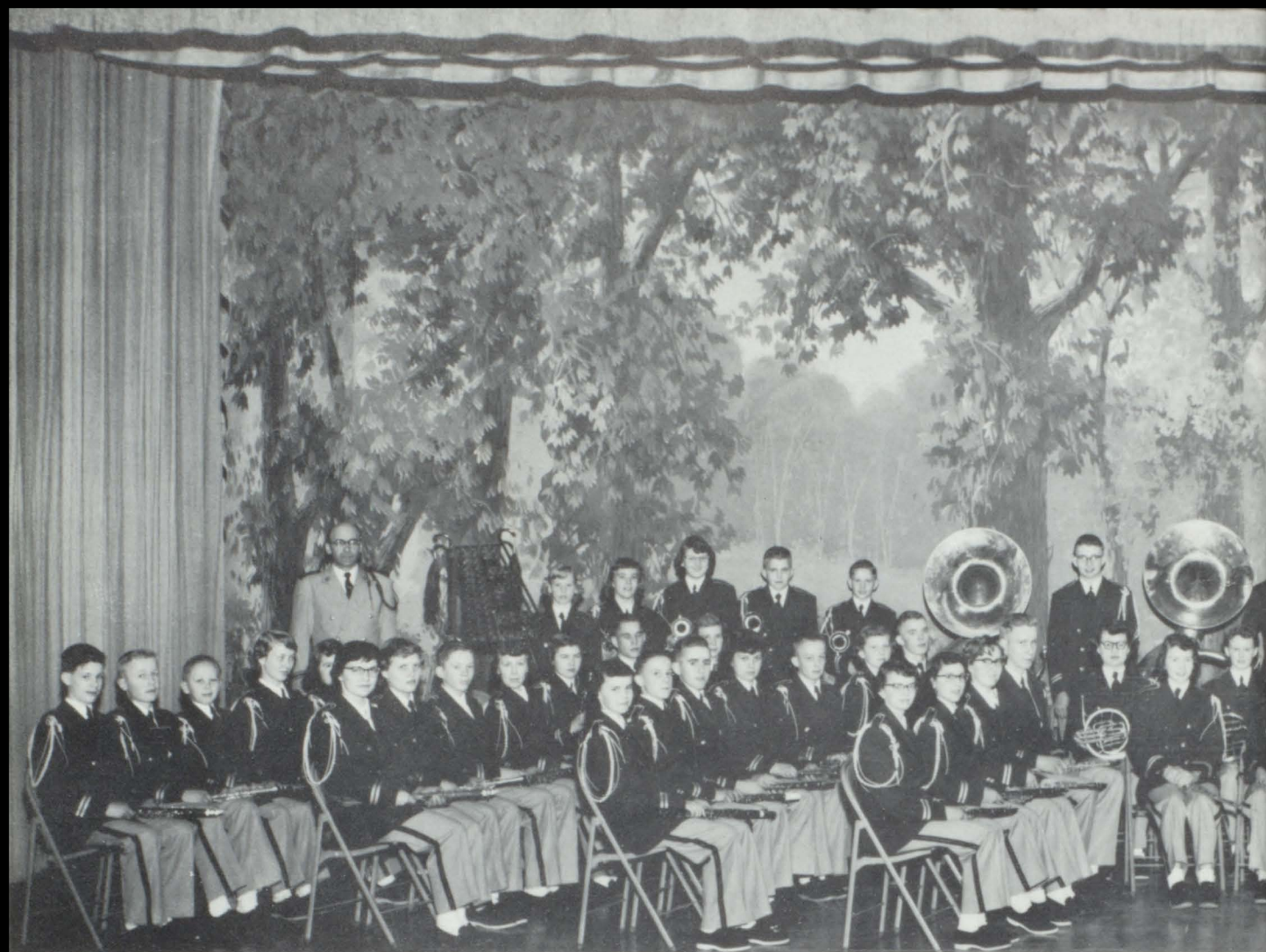
GRADES ONE AND TWO

Front row, left to right: Ronald Paulson, James Grove, Mark Christopherson, Jeanne Evenson, Stuart Brokke, Emmett Kleven, Susan Lian, Leon Vetter. Second row: Vickie Erickson, Jeffrey Nesvig, Sherman Stortroen, Lionel Estenson, Nancy Ranten, Sandra Moen, Linda Larson, Claudia Hanson, Robert Peterson. Third row: Robert Lian, Marlys Rotvold, Ivalde Abrams, Dorothy Evenson, Ronald Letnes, Rueben Gorden, Tommy Letnes, Miss Lorvig.





Activities



Mr. Langbell, director

SENIOR

Band Mother's Club

Left to right: Mrs. Arnold Amundson, Recording Secretary, Mrs. Ingman Wollertson, Financial Secretary, Mrs. Orin Monson, Vice President, Mrs. Alvin Aanenson, Treasurer, Mrs. Elmer Bredlie, President.





BAND

Band Officers

Director - K. O. Langbell, President - Gloria Eia, Vice-President - Elroy Folstad Sec'y-Treas. - Nancy Folstad, Band Manager - Cecil Malme, Librarians - Homer Olsen, Bruce Amundson.

Band Personnel

CLARINETS - Janis Abrams, Bruce Amundson, Russell Berg, Kenneth Boe, Carol Braaten, Joan Bredlie, Audrey Christopherson, Elaine Eichhorst, Arlene Eidsmoe, Noel Estenson, Jon Irwin, Fern Letnes, Lola Rognlie, Pernell Swenson, Annette Thune, Sandra Wollertson, Curtis Wegge.

ALTO SAXOPHONES - Ronald Brink, Yvonne Grove, Jerome Landgaard, JoAnne Letnes, Kay Vang, Jovonne Wollertson.

FLUTES - Gail Aanenson, Ella Marie Bjornstad, Darlene Hettervig, Marlene Koppang, Carol Morken, Borghild Sandvik.

TENOR SAXOPHONES - Helen Folstad, Aldine Gray, Ray Thune.

BELLS - Virginia Ranten.

CORNETS - Patty Brokke, Gene Christopherson, Elroy Folstad, Bonnie Gilbertson, Carol Jean Grove, Allen Koppang, Cecil Malme, Gary Monson, Carol Vang, Kay Wegge.

MELLOPHONES - MaryJane Brokke, Gloria Eia, Janice Irwin, JoAnne Thoreson.

BARITONES - Joan Abrams, Homer Olsen, Juneal Wollertson.

TROMBONES - Richard Brokke, Vernon Grove, David Monson, Barbara Morken, Janice Tonder.

BASSES - Jeanette Boucher, John Brady, George Hoffman, Robert Morken, Oris Semeling, Leon Thoreson.

PERCUSSION - Nancy Folstad, Marcella Olsen, William Grosfield, Loren Wegge.

Our school and community is very proud of our 65 piece band under the capable direction of Mr. Langbell. During the past two years we have received "A" ratings in the District music festivals and also "A" ratings in the State-area contests. The band is active during the summer months with regular practices and concerts being played in the local community and in neighboring communities.

This year new uniforms were provided for the band by our very active and efficient Band Mothers Club. We appreciate very much the cooperation and enthusiastic support given us by the Band Mothers. We hope in the future to repay their support by faithful performance.



MIXED CHORUS

Bottom row, left to right: Luella Moen, Verlys Malme, Joan Hanson, Joan Bredlie, Yvonne Einess, Joan Grove, Janice Wegge, Darlene Gordon, Jeanette Boucher, Joan Thoreson. Second row: Lola Bognlie, Carol Vang, Carol Jean Grove, Marlene Koppang, Bruce Amundson, Pernell Swenson, Robert Wegge, Donald Johnson, James Hagen, Leon Thorson, Ronald Brink, Fern Letnes, Nancy Folstad, Janice Strommen, Winifred Nesvig, Mr. Bakke-director. Third row: Anita Gramstad, Shirley Nygaard, Elroy Folstad, Arlen Braaten, John Irl Brady, Cecil Malme, Homer Olsen, Russell Berg, Arlen Paulsrud, William Grosfield, Richard Brokke, Loren Wegge, Noel Estenson, David Monson, Marcella Olson, Gloria Eia. Fourth row: Mary Jane Brokke, Arlene Eidsmoe, Sandra Wollertson, Margaret Vetter, Gail Stortroen, Yvonne Grove, Audrey Langhus, Janice Tonder, Kay Wegge, Ella Bjornstad, Janice Irwin, Shirley Nelson, Carol Morken, Annette Thune, Borghild Sandvik, Elaine Eichhorst, Marlys Tonder, Carol Svendsen.

Our mixed chorus, under the direction of Mr. Bakke, has a membership of 68. We gave a successful Christmas concert, singing "Hark of the Bells", "Jeg Er Saa Glad", and several others.

In May we gave a Spring Festival concert, singing, among others, "To Thee We Sing", which was also our District 31 contest number. Chorus officers are Yvonne Grove, President, Richard Brokke, Vice-President, and Carol Svendsen, Secretary-Treasurer.

Our accompanist is Nancy Folstad.



GIRLS GLEE CLUB

Bottom row, left to right: Joan Grove, Janice Wegge, Joan Knutson, Marjorie Aukland, Ella Bjornstad, Carol Mor-ken, Joan Bredlie, Darlene Gordon, Nancy Folstad, Jeanette Boucher. Second row: Mr. Bakke, director, Borghild Sandvik, Marlene Koppang, Carol Jean Grove, Luella Moen, Fern Letnes, Shirley Nelson, Janice Irwin, Joan Han-son, Yvonne Einess, Gail Aanenson, Verlys Malme, Shirley Shroeder, Janis Abrams. Third row: Shirley Olson, Janice Strommen, Marcella Olson, Gloria Eia, Lola Rognlie, Carol Vang, Darlene Letnes, Alayne Hettervig, JoAnn Thoreson, Winifred Nesvig, Anita Gramstad, Shirley Nygaard, Audrey Christopherson, Kay Wegge. Fourth row: Margaret Vettern, Sandra Wollertson, Arlene Eidsmoe, Lucella Swenson, Janice Tonder, Joan Abrams, Annette Thune, Gail Stortroen, Carol Svendson, Marlys Tonder, Elaine Eichhorst, Mary Jane Brokke, Audrey Langhus, Yvonne Grove, Rose Marie Smith, Margaret Grosfield.

BOYS GLEE CLUB

Bottom row, left to right: Robert Wegge, Pernel Swenson, Carl Ostgaard, Ronald Brink, Bruce Amundson. Second row: David Monson, Elroy Folstad, Don Johnson, Sheldon Wegge, Leon Thoreson, Mr. Bakke, director. Third row: William Grosfield, John Brady, Arlen Braaten, Loren Wegge, James Hagen, Noel Estenson. Fourth row: Arlen Paulsrud, Cecil Malme, Russell Berg, Homer Olsen, Richard Brokke.





Front row, left to right: Rose Marie Smith, Shirly Nygaard, Fern Letnes, Mary Jane Brokke, Janice Irwin, Joan Grove, Yvonne Einess, Verlys Malme, Ella Bjornstad, Marjorie Aukland. Second row: Carol Jean Grove, Carol Morken, Joan Peterson, Elaine Eichhorst, Shirley Coauette, Shirley Olson, Kay Vang, Darlene Gordon, Lola Rognlie, Joan Knutson, Carol Vang, Joan Cooper, Audrey Christopherson, Shirley Nelson, Shirley Shroeder. Third row: Mrs. Abrahamson, adviser, Darlene Letnes, Janis Strommen, Janice Wegge, Nancy Folstad, Joan Bredlie, Joan Hanson, Winifred Nesvig, Anita Gramstad, Gloria Eia, Joan Thoreson, Joan Ruick, Gail Aanenson, Jeanette Boucher, Alayne Hettervig. Fourth row: Margaret Vettern, Arlene Eidsmoe, Gail Stortroen, Yvonne Grove, Audrey Langhus, Janice Tonder, Lucella Swenson, Sandra Wollertson, Margaret Grosfield, Marlys Tonder, Carol Svendsen, Anette Thune, Marlene Koppang, Charlotte Foss.

FUTURE HOMEMAKERS OF AMERICA

The Climax Chapter of the Future Homemakers of America has a membership of 48 girls under the guidance of Mrs. Abrahamson, our adviser.

During the past year we have had various activities and parties such as Freshmen initiation and the Style Show when we invited our mothers, showed movies, and modeled our dresses we had made in our Home Economics classes. We also sent delegates to attend the State F.H.A. Convention in the Radisson Hotel, Minneapolis on March 13-14. We are very fortunate in having the State President, Winifred Nesvig, as a member of our chapter. Our big social event in the spring is the Mother-Daughter Banquet during which we award the degrees of achievement in F.H.A.

Officers:

President	Gloria Eia
Vice President	Gail Aanenson
Secretary	Jeanette Boucher
Treasurer	Yvonne Grove
Historian	Carol Svendsen
Reporter	Nancy Folstad
Song Leader	Joan Bredlie
Chapter Mother	Mrs. Lewis Letnes
Adviser	Mrs. Jennie Abrahamson



First Row, left to right: Lyle Berg, Loren Wegge, Lyman Nygaard, Earl Merkins, Roger Cooper, Russel Sylvester, Richard Brokke, Du Wayne Englestad, Sammy Nesvig, Wendlen Severson. Second Row: Sheldon Wegge, Don Johnson, Gene Tronnes, Leon Thoreson, Noel Estenson, Jerome Landgaard, Gene Brekke, Bernard Semeling, Rodney Cooper, David Monson, Arlen Braaten, James Cayler, Arlen Paulsrud. Third Row: Cecil Malme, Wayne Estenson, Bruce Burd, Rodger Sondrol, Maynard Sondrol, Dennis Aker, Arvid Stortroen, Russel Berg, Morris Ronnigen, Lanny Rognes. Fourth Row: Carl Ostgaard, Oris Semeling, Ron Brink, Roger Bangen, Jon Irwin, Bruce Amundson, Lawrence Jurchen, Pernell Swendson, Tom Boyer, Robert Wegge, Kenneth Boe, Mr. Norness, adviser.

FUTURE FARMERS OF AMERICA

We, the Future Farmers of America, under the able leadership of our adviser, George Nornes, have gone into the business of farming. This past year we raised 20 acres of wheat, had grain varieties and fertilizer plots in addition to raising more sweet corn than the community could eat.

Our chapter has had several judging teams that have competed in and won various District Contests, thus also giving them the right to enter the State Contests. Last October our chapter sent a delegation to the National F.F.A. Convention in Kansas City, Mo. where they toured several farms and manufacturing plants.

Cecil Malme and Arlen Paulsrud have received the highest degree given in the state, the State Farmers Degree. They raised the total to seven who have received this coveted degree. Cecil Malme, State Vice-President, is the second state officer from Climax in the past three years.

At the State F.F.A. Convention this year Cecil Malme was elected State Secretary, Arlen Paulsrud was named State Star Farmer and Rodger Sondrol received the Champion Cement Award.

We know that the high standards of the Future Farmers of America organization will continue to be met by Climax members as they have in the past.

Officers:

President	Arlen Paulsrud
Vice-President	Cecil Malme
Secretary	Richard Brokke
Treasurer	Rodger Sondrol
Reporter	Russel Burg
Sentinel	Earl Merkins
Adviser	Mr. Nornes



Sr. Camera Club - Front row, left to right: Carol Vang, Elroy Folstad, Lola Rognlie, Gene Christopherson, Gail Aanenson, Yvonne Einess, Gloria Eia, David Monson. Second row: James Hagen, Rodney Cooper, Marcella Olson, Shirley Couette, Joan Ruick, Arlen Braaten, John Brady. Third row: William Grosfield, Wendlen Severson, Roger Cooper, Cedil Malme, Roger Sondrol, Homer Olsen, Maynard Sondrol. Fourth row - Dean Barr-Instructor, Audrey Langhus, Bruce Amundson, Nancy Folstad, Kenneth Boe, Fern Letnes, Bernard Semeling.

CAMERA CLUBS

Jr. Camera Club - Front row, left to right: Joan Letnes, Richard Samuelson, Aldine Grey, Bonnie Gilbertson, Helen Folstad, Marlys Spokely, Shirley Dybing, Geraldine Paulsrud, Vernon Grove. Second row: Marjorie Hanson, Elizabeth Holland, Patty Brokke, Allan Koppang, Sonja Engen, Darlene Hettervig, Virginia Ranten, Juneal Wollertson. Third row: Ray Thune, Brent Amundson, Gary Monson, Merlyn Malme, Pernell Holland, Arnold Moen, Ralph Peterson, Leslie Nesvig, Sharon Nelson, Dean Barr - Instructor. Fourth row: Curtis Wegge, Dianne Tonder, Eileen Hartman, Nancy Quirk, Jovonne Wollertson, Marlene Larson, Kay Vang, Beverly Quirk, Barbara Morken, Maxine Vettern.



Mrs. Kunkel, our competent librarian, has as her assistants a group of efficient high school students. Our library is always a pleasant and profitable place to work and study under the direction of this staff of supervisors.

LIBRARY STAFF



Left to right: Marlys Tonder, Shirley Nygaard, Joan Hanson, Joan Cooper, Verlys Malme, Gloria Eia, Mrs. Kunkel, Audrey Christopherson, Jeanette Boucher, Yvonne Einess, Gail Aanenson, Mary Jane Brokke.

GIRLS' ATHLETIC ASSOCIATION

Top row, left to right: Arlene Eidsmoe, Gail Stortroen, Yvonne Grove, Audrey Langhus, Janice Tonder, Lucella Swenson, Joan Abrams, Margret Grosfield, Marlys Tonder, Carol Svendsen, Annette Thune, Marlene Koppang. Second row: Janis Abrams, Janice Wegge, Nancy Folstad, Joan Bredlie, Joan Hanson, Winifred Nesvig, Anita Gramstad, Gloria Eia, JoAnn Thoreson, Joan Ruick, Gail Aanenson, Jeanette Boucher. Third row: Elaine Eichhorst, Shirley Couette, Shirley Olson, Kay Wegge, Darlene Gordon, Lola Rognlie, Joan Knutson, Carol Vang, Joan Cooper, Audrey Christopherson. Fourth row: Rose Marie Smith, Luella Moen, Fern Letnes, Mary Jane Brokke, Janice Irwin, Joan Grove, Yvonne Einess, Verlys Malme, Ella Bjornstad, Marjorie Aukland.





Front Row, Left to right: Nancy Folstad, Jeanette Boucher, Gail Aanenson, Joan Hanson, Marlys Tonder, Shirley Coauette. Second Row: Janice Tonder, Anette Thune, Fern Letnes, Elaine Eichhorst, Audrey Langhus, Mr. Olsen, adviser. Third Row: Carol Svendsen, Gloria Eia, Joan Ruick, Audry Christopherson, Joan Cooper, Verlys Malme, Joan Grove.

FUTURE TEACHERS OF AMERICA

The Nora Engh Future Teachers of America Club was organized in 1951. It was named in honor of Nora Engh who taught in Climax twenty-six years. This club is open to girls and boys who plan teaching as a career.

During the year our club carries out projects such as substitute teaching, assisting poor students, school beautification, administrative assistance, repairing books, hot lunch supervision, library work, and Sunday School teaching. For every hour of work on these projects we receive one merit point. Merit certificates are awarded at the end of each year designating the number of points earned.

Some of the purposes of this club are to develop an organization among young people preparing to be teachers and acquaint future teachers with the history and ethics of the teaching profession; interest the best young men and women in teaching as a lifelong career; provide young people with information about opportunities in various fields of education, and encourage careful selection of persons admitted to schools which prepare teachers.

Officers:

President	Gail Aanenson
Vice President	Joan Hanson
Secretary	Marlys Tonder
Treasurer	Nancy Folstad
Reporter	Jeanette Boucher
Adviser	Mr. Olsen



Declamation

First row, left to right: Diane Tonder, Eileen Hartman, Nancy Quirk, Marlene Larson, Beverly Quirk, Virginia Ranten, Barbara Morken, Juneal Wollertson, Kay Vang, Yvonne Grove. Second row: Elaine Eichhorst, Patty Brokke, Joan Letnes, Carol Braaten, Luella Moen, Gary Monson, Brent Amundson, James Rowley, Marlys Tonder, Carol Svendson, Mary Jane Brokke. Third row: Carol Jean Grove, Carol Morken, Joan Hanson, Verlys Malme, Gloria Eia, Darlene Letnes, Gail Aanenson, Jeanette Boucher, Shirley Nygaard, John Brady, Cecil Malme, Homer Olsen.

One Act Play

Left to right: Ronald Brink, Gloria Eia, Lola Rognlie, Cecil Malme, Joan Bredlie, John Brady.





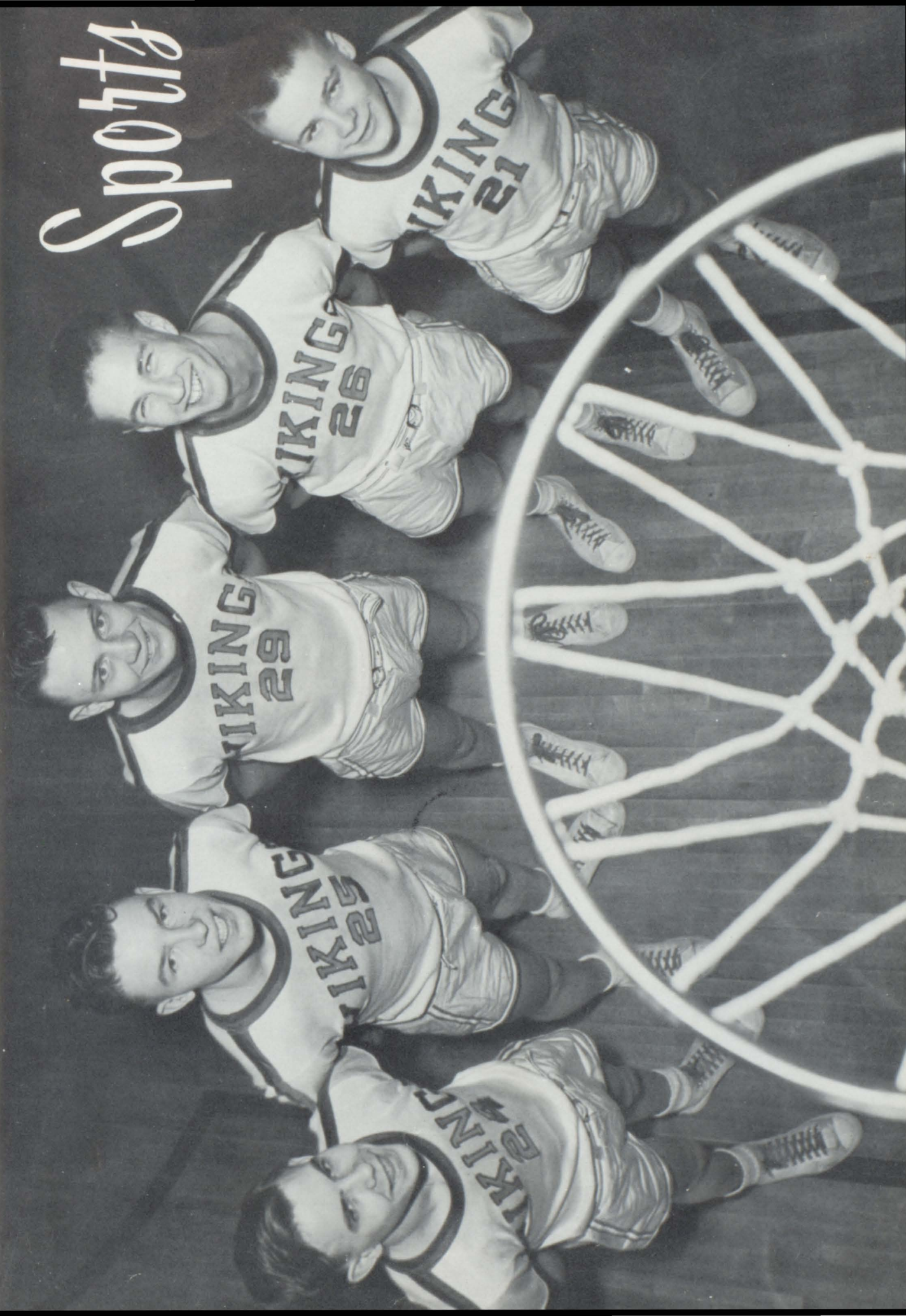
JUNIOR CLASS PLAY

"Let Me Grow Up"

Lexie, a young miss	Kay Wegge
Muriel, her talented sister	Shirley Olson
Matt, her musical brother	John Irl Brady
Nola Fleming, their actress mother	Jeanette Boucher
Aunt Lydia, their old-maid aunt	Janice Strommen
Mary Jo, a young friend	Mary Jane Brokke
Arden, a local siren	Winifred Nesvig
Bell Henderson, a soldier	Harold Rowley
Mrs. Holden, a producer	Carol Morken
Stage managers	Carol Jean Grove and Joan Cooper
Student director	Gail Aanenson
Director	Mrs. Kunkel

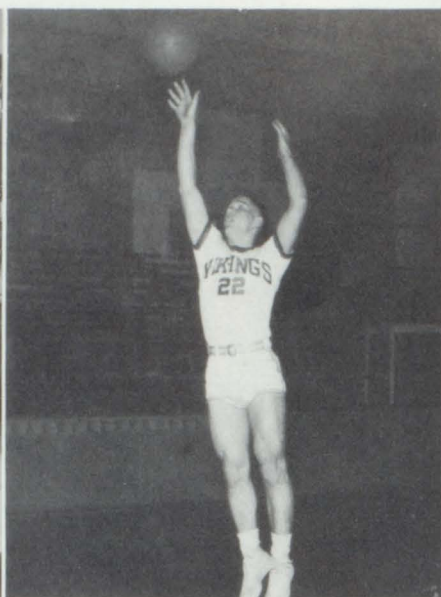


Spots





Coach Mjolsness



Elroy Folstad



Homer Olsen

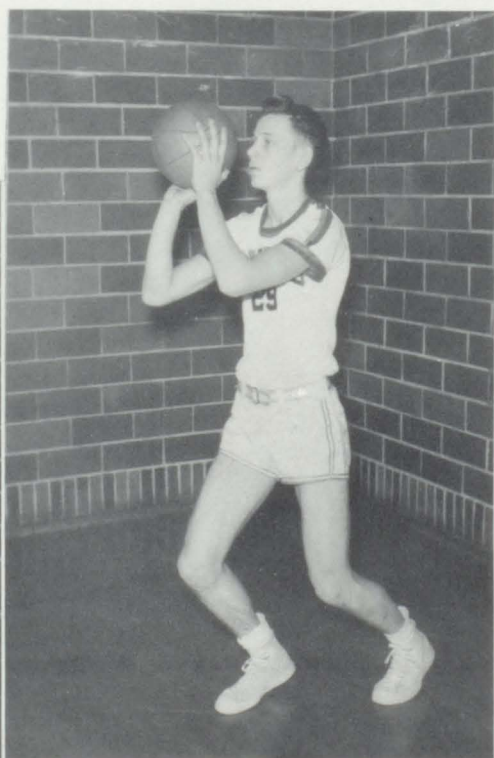
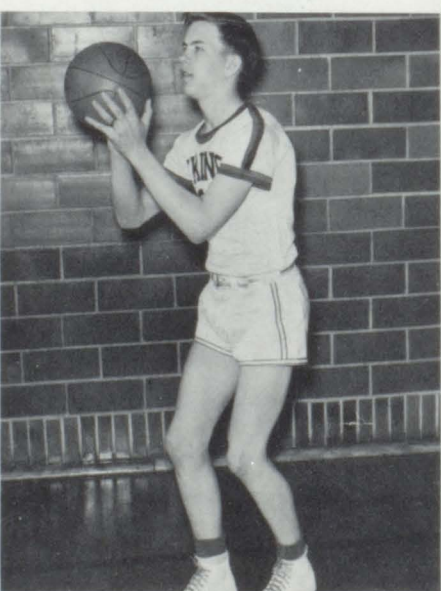
The Viking squad began the season this year with an inexperienced squad, having only one letter man returning from the previous season. As the season progressed the team improved rapidly under the direction of Dan Mjolsness, Viking coach, evidenced by winning the last six games in regular seasons play.

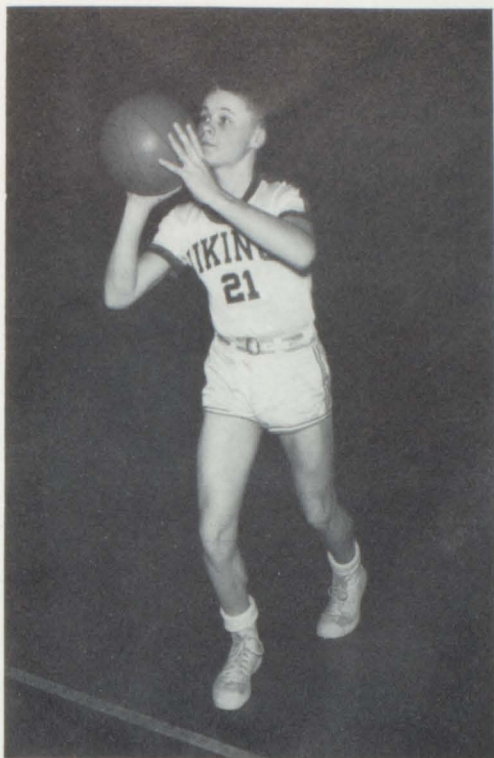
Lanny Rogness

Bruce Burd



Harold Rowley





David Monson



Gene Christopherson



John Brady

Basket Ball Schedule 1952-1953

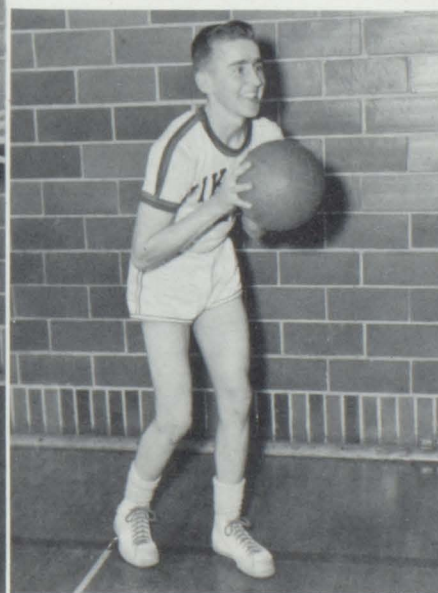
Climax	32	Crookston AC	46
Climax	53	Hendrum	56
Climax	82	Twin Valley	65
Climax	43	Crookston	47
Climax	43	Warren	54
Climax	50	Halstad	61
Climax	50	Fisher	43
Climax	52	Ada	63
Climax	55	Argyle	36
Climax	43	Crookston	55
Climax	61	R L Falls	71
Climax	40	Fertile	49
Climax	44	Halstad	49
Climax	55	Fisher	51
Climax	54	Warren	47
Climax	52	R L Falls	44
Climax	55	Sacred Heart	54
Climax	41	Crookston AC	65
Climax	52	East Grand Forks	46
Climax	42	East Grand Forks	46 (Tournament)

Noel Estenson

Arvid Strortroen



Dennis Aker





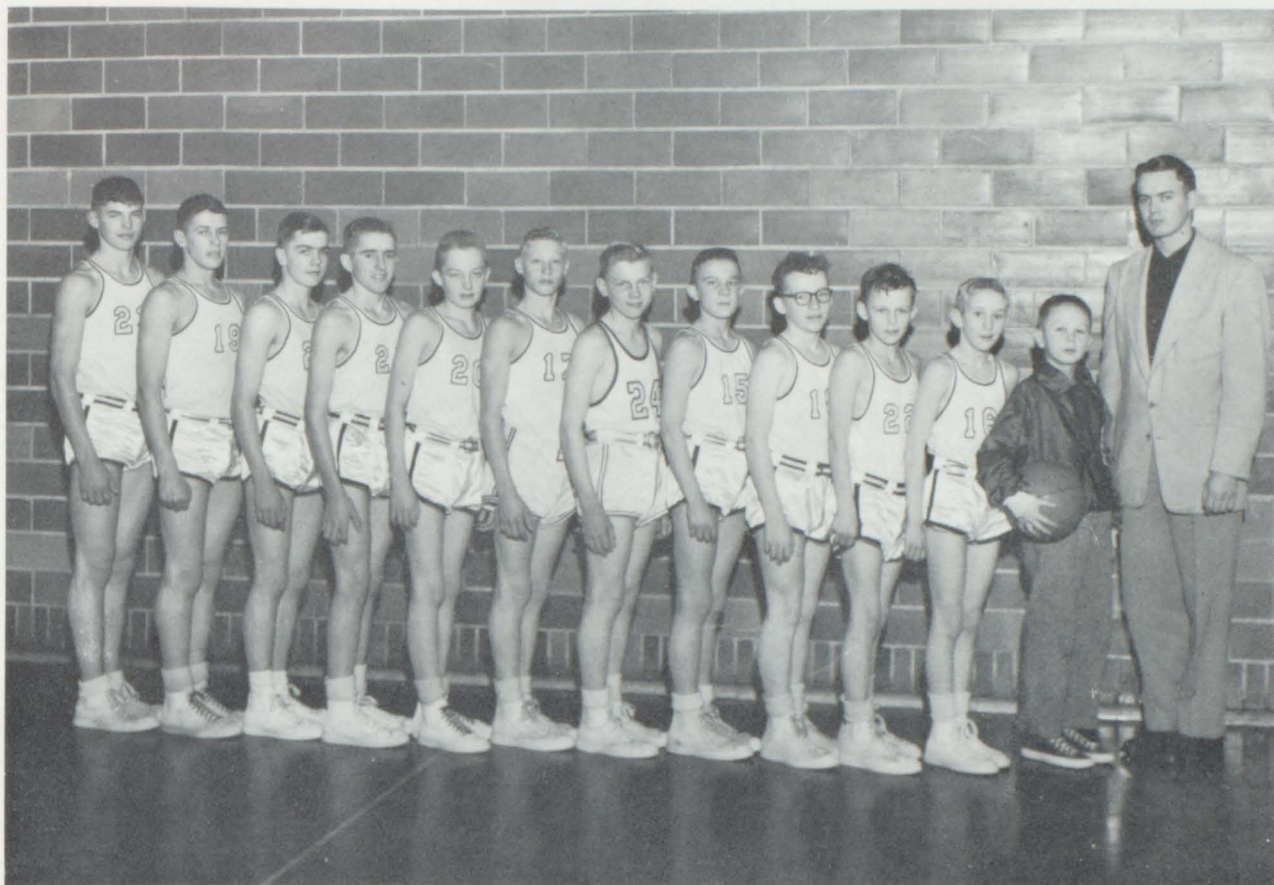
Basketball "A" Team

Bottom row, left to right: Dennis Aker, Bruce Burd, Lanny Rognes. Second Row: William Grosfield, John Irl Brady, Homer Olsen, Harold Rowley, Coach Mjolsness. Third row: Gene Christopherson, Elroy Folstad, David Monson, Arvid Stortroen - Student Manager.

"A" - Team Cheerleaders

Left to Right: Verlys Malme, Mary Jane Brokke, Carol Svendsen, Yvonne Einess.





Basketball "B" Team

Left to right: Milton Cayler, James Cayler, Jerome Landgaard, Noel Estenson, Gene Christopherson, Robert Wegge, Raymond Thume, Bruce Amundson, Ralph Peterson, Leslie Nesvig, Ronald Brink, Curtis Wegge, manager, Mr. Dalen, coach.



"B" Team Cheerleaders

Left to right: Lola Rognlie, Sandra Wollertson, Fern Letnes.



"C" Team"

Front row, left to right: Bruce Amundson, Noel Estenson, Robert Morken, James Cayler, Vernon Grove, Raymond Thune, Brent Amundson. Back row: Curtis Wegge, Ralph Peterson, Merlyn Malme, Gary Monson, Leslie Nesvig, Allan Koppang, Mr. Nornes, coach.

"C" Club

Front row: Dennis Aker, Homer Olsen, Arvid Stortroen, Daniel Mjolsness, adviser. Back row: Bruce Burd, Harold Rowley, Lannie Rognes, David Monson, Elroy Folstad.





Boyer clears the bar.



Paulsrud made it too.



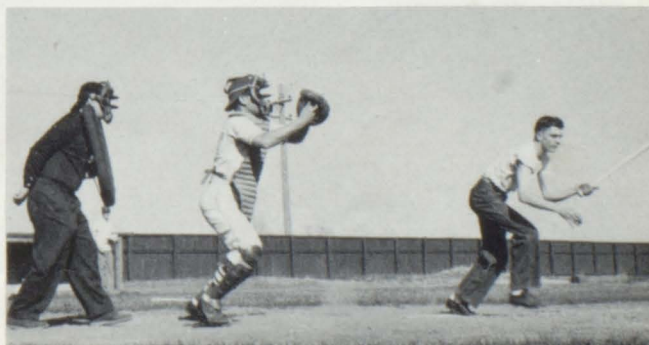
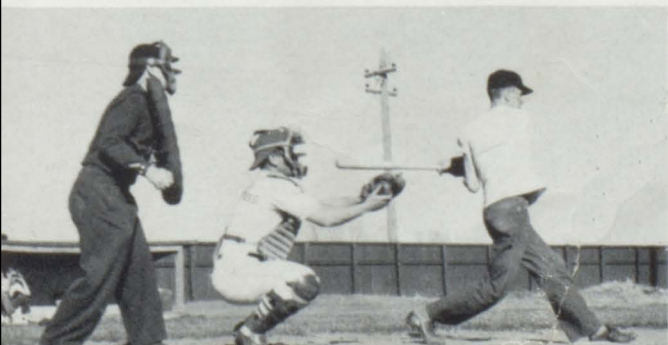
Left to right: Folstad, Sylvester, Estenson, Amundson. Waiting for the starting gun - Bruce must be impatient.

Baseball Team First row, left to right: L. Nesvig, Brink, Amundson, Estenson, Tronnes. Second row: Christopherson, Landgaard, Monson, Cayler, Folstad, Burd, S. Nesvig, Grosfield, Malme, Paulsrud, Coach Dalen.



Burd gets hold of one.

Ball four on Landgaard.



Cooks

Mrs. George Keller and Mrs. Marcus Aas are our efficient cooks who spend long hours in the kitchen just to serve us their delicious meals.



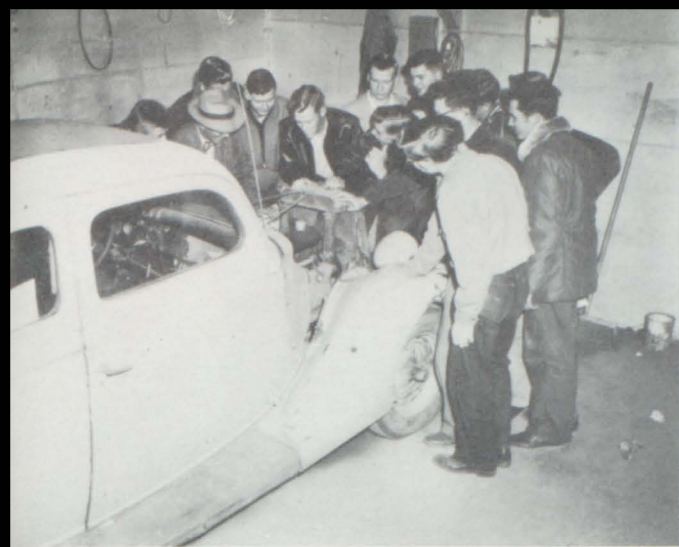
Janitors

John Kjelsrud and Marcus Aas are our hard-working janitors who keep our school surroundings comfortable, clean and pleasant. They are always patient, cheerful and co-operative.

Bus Drivers

Our faithful bus drivers are Marcus Aas, Royal Hanson and Chester Mauritsen. Through all types of weather they strive to bring us to school.





Interesting Ag Shop lesson?



Ambitious students have a hardy appetite.



Quit looking at us!

Conscientious Home Ec. students.



The faculty gets hungry too.





State F.F.A. Sec. Cecil Malme and former State F.H.A. Pres. Winnifred Nesvig.

Cecil and Arlen Paulsrud, F.F.A. District Star Farmer.

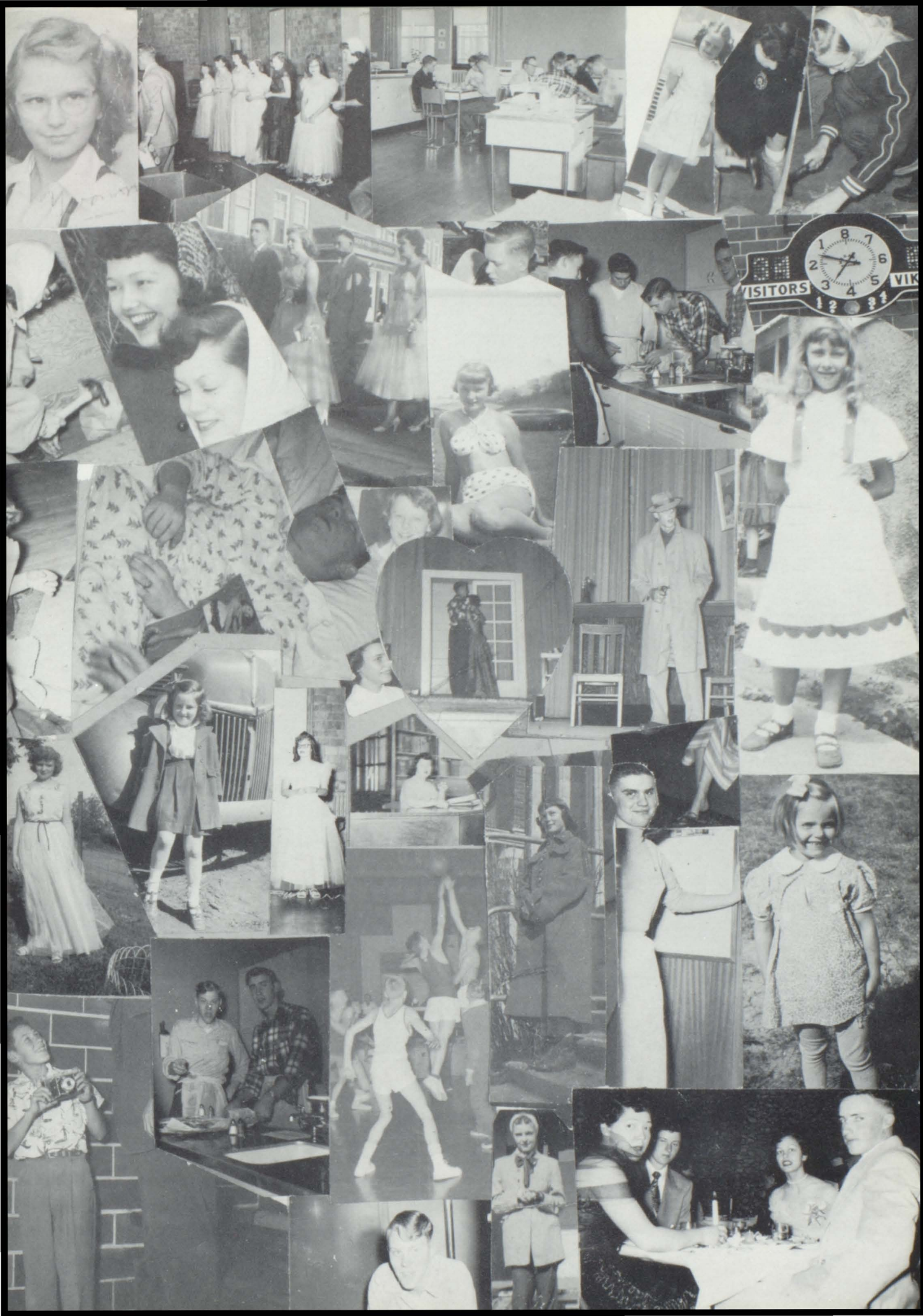


Our drivers training car and instructor Mr. Bakke.



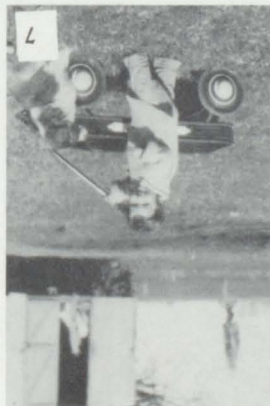
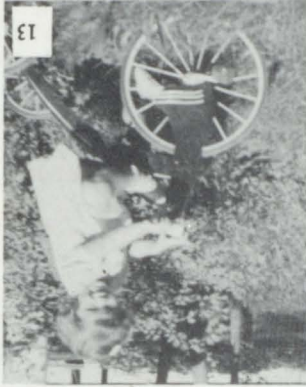
The winning soils judging team and advisor Mr. Nornes.





1. Yvonne Grove, 2. Audrey Langhus, 3. Verlys Malme, 4. Elaine Eichhorst, 5. Carol Svendson, 6. Joan Hanson, 7. DuWayne Engelstad, 8. Joan Bredlie, 9. Yvonne Einess, 10. Nancy Folstad, 11. Shirley Nygaard, 12. Gloria Eia, 13. Marlys Tonder, 14. Marcella Olson.

Answers



KIDDIES QUIZ

Class of 1953





SENIOR PLAY

"Seven Keys to Baldpate"

Elijah Quimby, the caretaker of Baldpate Inn	Arlen Paulsrud
Mrs. Quimby, the caretaker's wife	Gloria Eia
William Hollowell Magee, the novelist	Homer Olsen
John Bland, the millionaire's right hand man	Arvid Stortroen
Mary Norton, the newspaper reporter	Marlys Tonder
Mrs. Rhodes, the charming widow	Joan Bredlie
Peters, the hermit of Baldpate	Gene Tronnes
Myra Thornhill, the blackmailer	Verlys Malme
Lou Max, the mayor's man Friday	Dennis Aker
Jim Cargan, the crooked mayor of Reuton	Roger Sondral
Thomas Hayden, the president of the R.&E. Surburban R.R.	Wendlen Severson
Jiggs Kennedy, chief of police of Ashbury Falls	Cecil Malme
Hal Bentley, the owner of Baldpate	Wayne Estenson
Two Policemen	Russel Berg
	Du Wayne Engelstad

Production Staff

Director	Mrs. Charlotte Kunkel
Student Directors	Nancy Folstad
	Yvonne Einess
Business Manager	Marcella Olson
Property Managers	Earl Merkins
	Morris Ronnigan
	Roger Cooper
Makeup	Mrs. Dean Barr
	Marcella Olson
Usherettes	Shirley Nygaard
	Joan Hanson
	Carol Svendsen
	Audrey Langhus
	Yvonne Grove
	Elaine Eichhorst





JUNIOR-SENIOR BANQUET



The junior class gave the seniors a very beautiful banquet and program this year. They spent much time decorating and otherwise preparing for this delicious feast. We express our appreciation to the junior class for their ingenuity and efforts which made us enjoy ourselves so.



"Ocean Fantasy"





GRADE OPERETTA



THE GALLANT TAILOR





Seated left to right: Gloria Eia, Homer Olsen, Marcella Olson. Standing: Mrs. Barr, Cecil Malme, Wayne Estenson, Arlen Paulsrud, Carol Svendsen, Rodger Sondrol.

ANNUAL STAFF

Homer Olsen	Editor
Gloria Eia	Assoc. Editor
Carol Svendsen	Feature Editor
Arlen Paulsrud	Sports Editor
Marcella Olson	Layout and Artistry
Rodger Sondrol	Business Manager
Wayne Estenson	Advertising
Cecil Malme	Advertising
Mrs. Barr	Advisor

The Viking Staff wishes to express its appreciation to all those who have cooperated toward making this annual a success. We especially wish to thank Mrs. Barr, our capable advisor.

ADVERTISING

\$10.00

Stenshoel Funeral Home
Polk County State Bank
Johnson Jewelers
Brekken's Clothing
Crookston Clinic
Northwest Clinic
Nordlum Equipment
"costs less to farm with Case"
Malme Hardware and Implement
Shelly State Bank
Shelly Farmers Co-op Creamery
Association
"Feed - Poultry - Eggs - Milk"
Climax Grain Elevator
"Coal - Feed - Grain - Seeds"
Farmers Union
Climax Implement

Crookston
Crookston
Crookston
Crookston
Crookston
Crookston
Crookston

Shelly
Shelly
Shelly

Climax
Climax
Climax

\$5.00

Main Street Motors "23 years of service"
Dodge - Plymouth
Maves Optical
Consumers Gas
Eagle Drug
Ottertail Power Co.
"Reddy Kilowatt Service"
Massey Harris & New Holland
Crookston Implement Co.
Bridgeman Creamery
Houske Funeral Home
Crookston Milling Co.
"Cremo Flour - Minnesota-Maid Feeds"
Nelson Bros. Garage
Farmers Co-operative Elevator &
Lumber Co.
Shelly Meat Market
Boe's Hatchery
"Baby Chicks - Feeds - Equipment
Electrical Appliances"
Climax Creamery
"Eggs - Feed - Poultry - Cream"
Brokke Potato Co.
Dewey Johnson's Store
Ireland's Lumber Yard
"Everything to build with,
no one sells for less"
Einess Cafe

Crookston
Crookston
Crookston
Crookston
Crookston
Crookston

Crookston
Crookston
Crookston
Crookston
Crookston

Shelly
Shelly

Shelly
Nielsville

Climax

Climax
Climax
Climax

Climax

\$3.00

Langbell Music Store
Zitzer's Flowers

Crookston
Crookston

Monroe Furniture Co.
S. & L. Store
C.O.D. Clothing Store
Crookston Laundry
Farmer's Elevator
Crookston Milling Co.
Cash Mercantile Co.
Eric Landgaard, prop.
"Fairway Fine Foods," hardware and paints
Peavy Elevators
Dealers in grain, coal fertilizers, and
weed sprays. Phone No. 1
Michael-Swanson-Brady Produce Co.
Table and seed potatoes
Bakke Bros.
Skelly Oil Products, expert greasing
accessories

Crookston
Crookston
Crookston
Crookston
Eldred
Nielsville
Nielsville

Nielsville

Nielsville

Nielsville

\$2.00

Penney's
Barlow Furniture Store
Crookston Recap and Supply
Osmon Drug
Bernard Wollertson
Dybing's Cafe
Drugs - Confectionery - lunches - meals
Roy Rude - Standard Oil Agent
Sit's Tavern
Palmer Sharpe
Blacksmithing and welding
Eidsmoe's Cafe
B. M. Svendsen Service Station
Gas - Oil - Batteries - Tires
Evenson Store
Brink's Service Station

Crookston
Crookston
Crookston
Crookston
Shelly
Shelly

Shelly
Climax
Nielsville

Nielsville
Nielsville

Eldred
Eldred

\$1.00

Crookston Surplus
Crookston Record Shop
Reutell's
"Where savings are greatest"
Klien's Cleaners
Jib's Sport Shop
Hackenberg Motors
G.T.A. Elevator
Mikelby's Cafe
Kobervig's Meat Market
Amundson Barber Shop
Aalgaard Service Station
Geney's Cafe
Brady Merc.
Shelly Service Station

Crookston
Crookston
Crookston

Crookston
Crookston
Crookston
Eldred
Eldred
Climax
Shelly
Shelly
Shelly
Shelly

